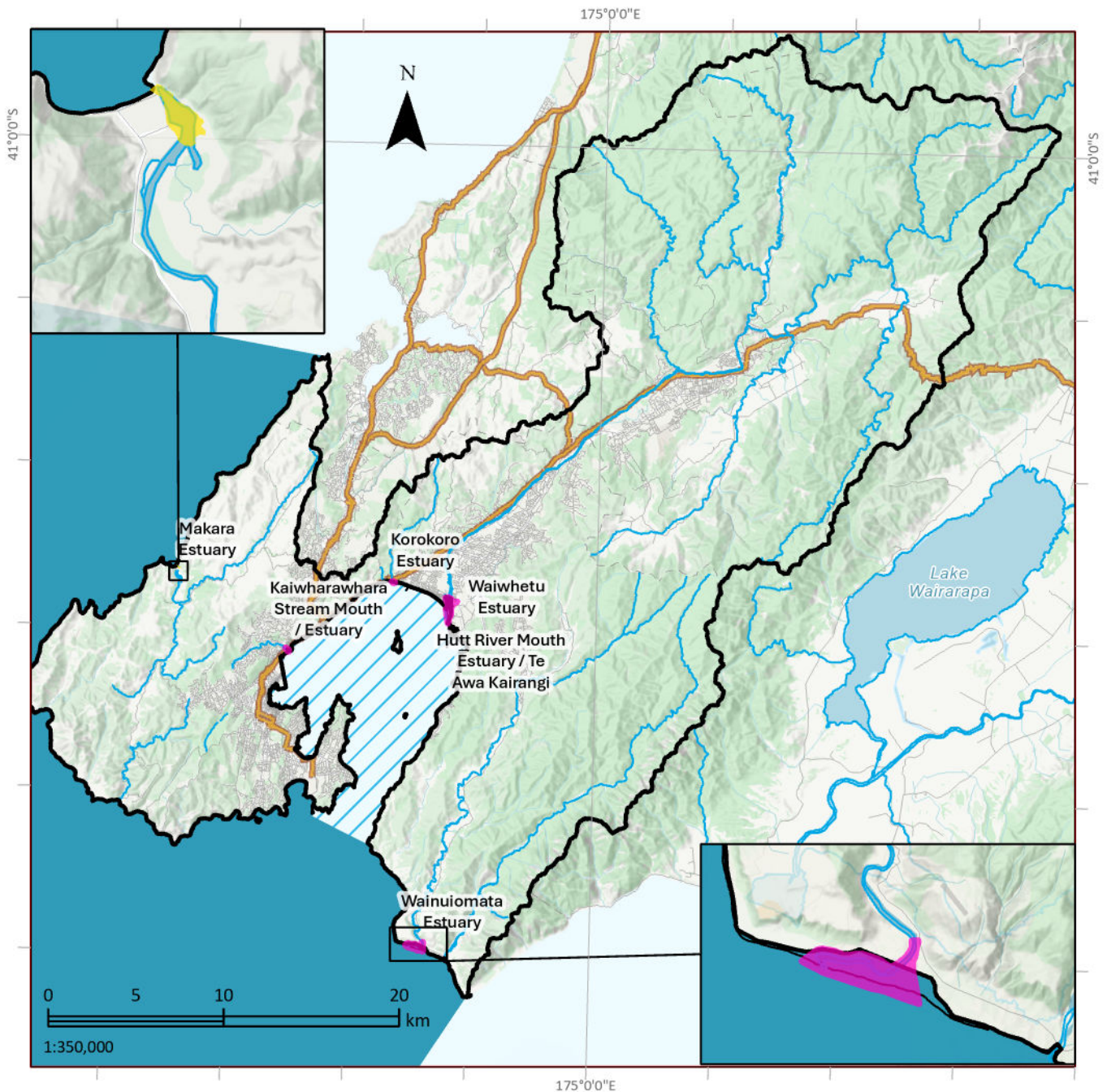


Right of reply recommendation: Coastal water management units - Te Whanganui-a-Tara

Map 83



Coastal water management units

- | | |
|--|---|
| Mākara Estuary | Whaitua (Freshwater management unit) |
| Other estuaries | Rivers |
| Wai Tai | State Highways |
| Te Whanganui-a-Tara harbour | |

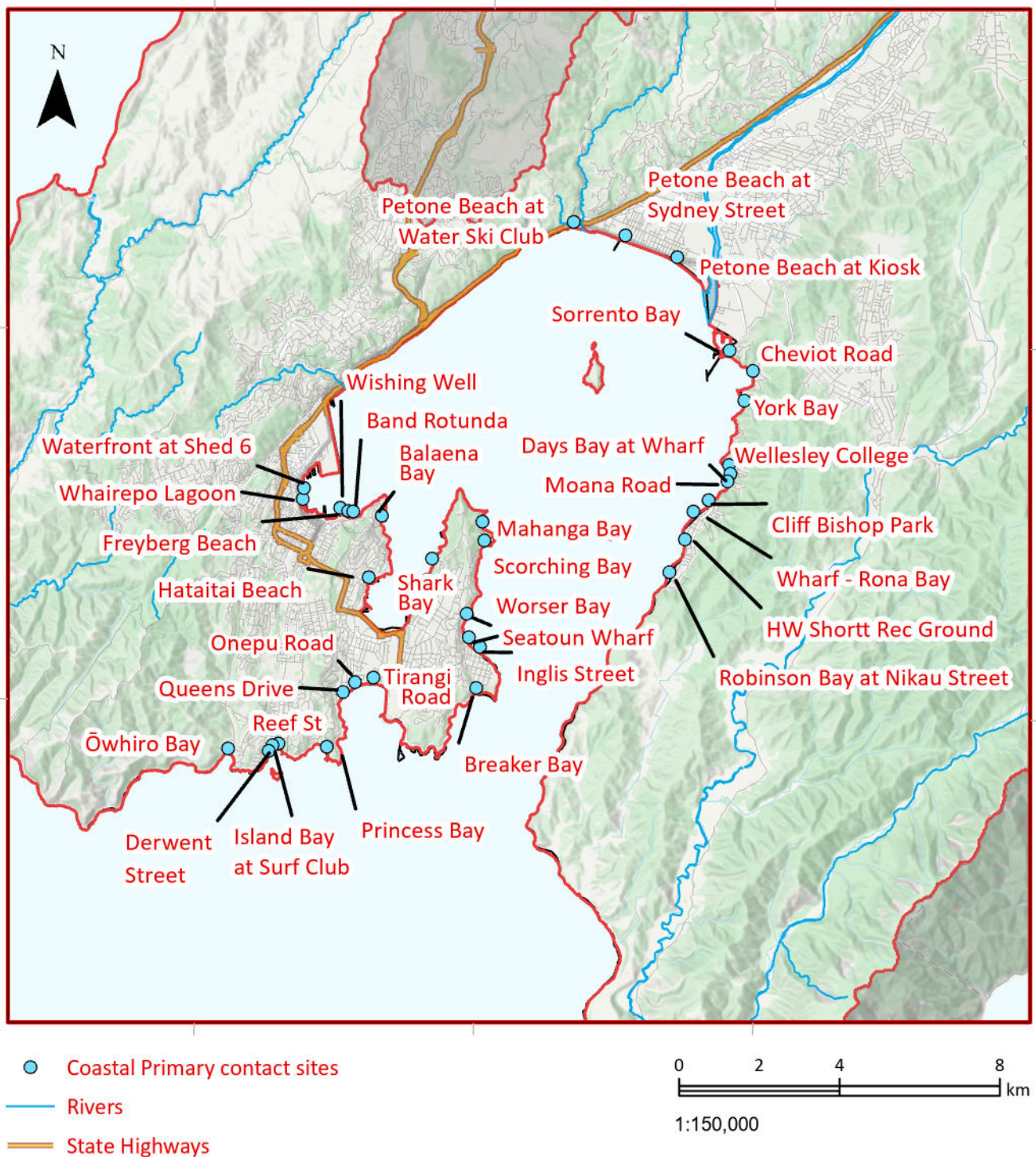
This version of the map is not complete. The version of this map available online through the online web map viewer shows the complete, detailed information on a GIS overlay that is not shown on this hard copy. The online version is available on the Council's website at <https://experience.arcgis.com/experience/8ca4cb5241604ee0a981935b9be3fd4c/page/Natural-Resources-Plan/> and can be accessed from the Council offices or public library. **Please not that the online map does not include section 42A recommendations.**

Copyright
Basemap: Eagle Technology, GWRC, LINZ
Topographic & Cadastral: LINZ, CoreLogic
Projection: NZTM 2000

Right of Reply recommendation:

Coastal water enterococci objectives - Te Whanganui-a-Tara

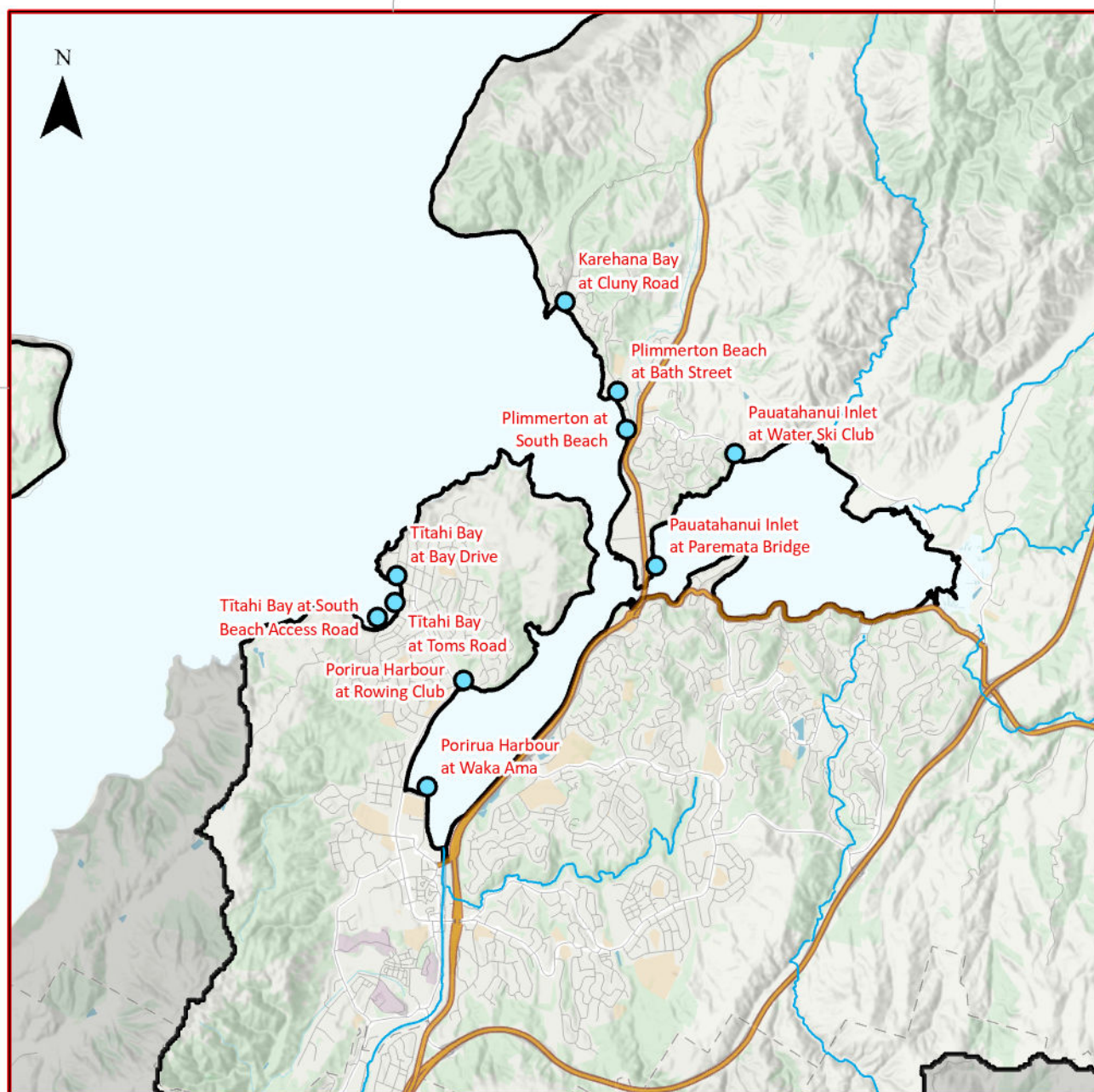
Map 85a



This version of the map is not complete. The version of this map available online through the online web map viewer shows the complete, detailed information on a GIS overlay that is not shown on this hard copy. The online version is available on the Council's website at <https://experience.arcgis.com/experience/8ca4cb5241604ee0a981935b9be3fd4c/page/Natural-Resources-Plan/> and can be accessed from the Council offices or public library. **Please not that the online map does not include section 42A recommendations.**

Right of Reply recommendation: Coastal water enterococci objectives - Te Awarua-o-Porirua

Map 85b



● Coastal Primary contact sites

— Rivers

— State Highways

0 1 2 4
km
1:75,000

This version of the map is not complete. The version of this map available online through the online web map viewer shows the complete, detailed information on a GIS overlay that is not shown on this hard copy. The online version is available on the Council's website at <https://experience.arcgis.com/experience/8ca4cb5241604ee0a981935b9be3fd4c/page/Natural-Resources-Plan/> and can be accessed from the Council offices or public library. **Please note that the online map does not include section 42A recommendations.**