

Ko te Whakarite i Ngā Hononga

Ensuring Connections

These illustrations were created from a kanohi ki te kanohi kōrero that brought together key participants across iwi and hapū from Te Upoko o Te Ika a Māui. The February 9th wānanga was held at Te Rau Karamu Marae in Te Whanganui-a-Tara for an initiative by the WRLC.

Connected Foundations

The magic is in the connection between people.

This work is hard.

As technical as climate science is, it is nothing compared to the hard work of building relationships.

We have partnerships without trust.
Our whānau don't trust the government...

.. and they don't trust our whānau.

When climate change is approached by government, it's a technical problem with technical solutions.

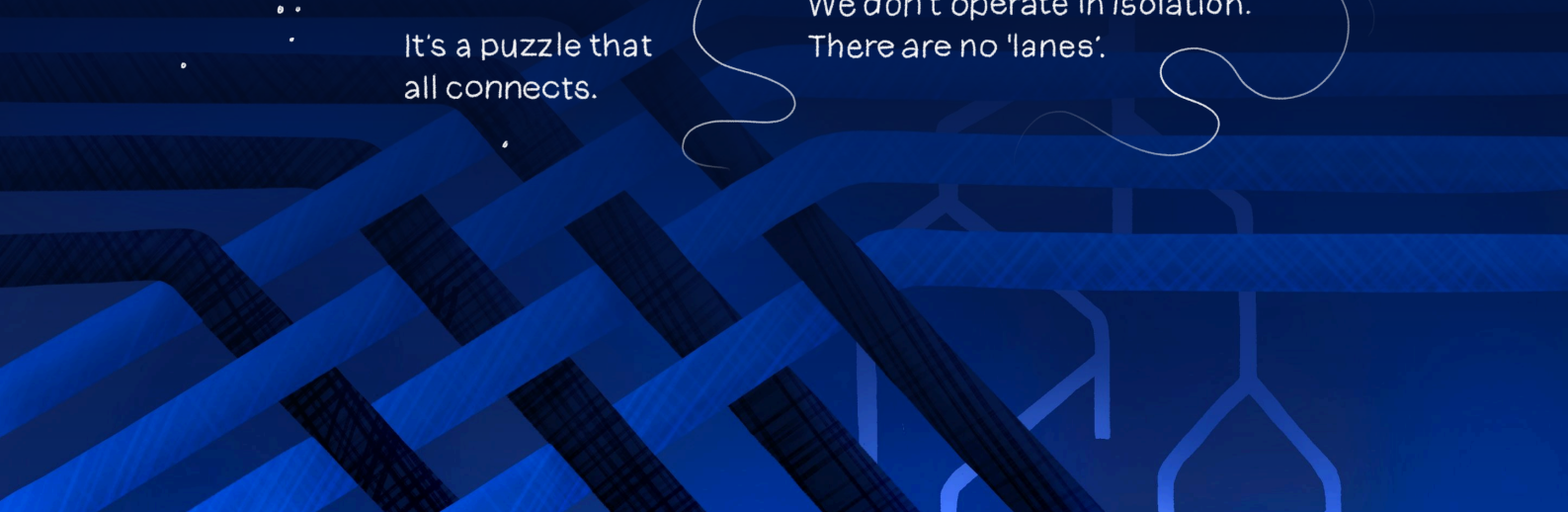
For Māori, climate change is built into our nervous system. It's built on ancient ways of doing.

Our greatest strength is relationships at every level.
Leaders → leaders.
Doers → doers.

We all have these different relationships. But it's how we bring them all back in.

It's a puzzle that all connects.

We don't operate in isolation. There are no 'lanes'.



Strength in Unity

The easy bit is sharing what we do and sharing our knowledge, the only hard bit is decision making.

There is a way that Māori lead and organisations need to know that and then let Māori lead.

The value in these Iwi led kaupapa is huge.

It's about setting the right conditions so that someone can be a good partner.

We will work alongside the councils but we are kaitiaki the whole way.

Both top down and bottom up can be useful, we can work within the system when we need too.

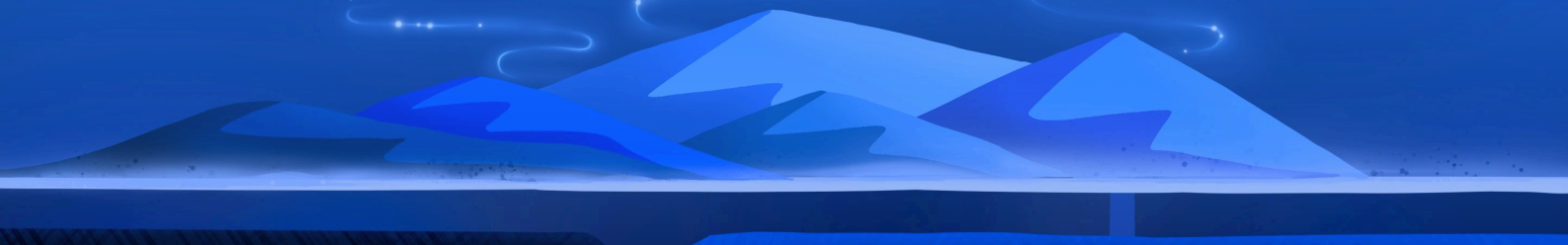
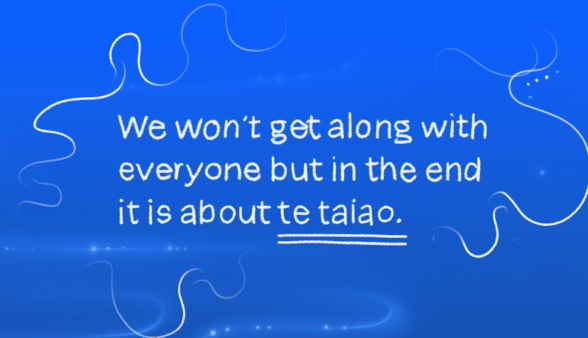
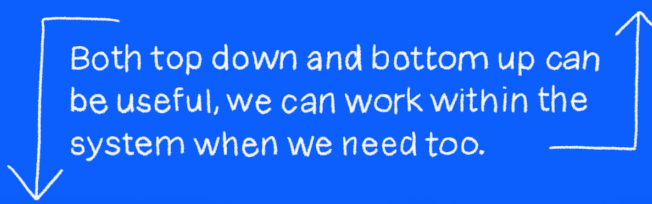
It can't be tokenistic. Tangible outcomes for our community.

Not despite of but... Because of this political turmoil, we must do this work. And it must be enduring for future generations.

The reality is the crown still holds the power and pūtea

Take the power and control away from funders and put into the hands of community and Iwi.

We won't get along with everyone but in the end it is about te taiao.



Navigating the Future

We need relationships with purpose.
We can disagree and still carry on.

Communities are living safely.
That's our bottom line.



Through the ups and downs,
it is peace that we seek.

We need to show them that climate
resilience is economic resilience.

What's behind us can
move us forward.

If we are to do something like this
we want to do it once and well.

Weather,
political change,
economics, geopolitics.
It's all climate change.

A change at this end of the
road will effect communities
at the end of the road.

The values of our food
system need to lift, to
change our approach.

So we can ensure that whatever
tools get built can be used by
whānau on the ground.

We need to look further,
towards our mokopuna.