

For Information

WHAITUA IMPLEMENTATION PROGRAMME PROGRESS REPORT

Te take mō te pūrongo

Purpose

1. To update the Environment and Climate Committee (the Committee) on progress made in the period June to November 2025 on implementing Whaitua Implementation Programmes (WIPs).

Te tāhū kōrero

Background

2. The Whaitua development programme began in 2014 to underpin Greater Wellington's approach to giving effect to the National Policy Statement for Freshwater Management (NPS-FM). WIPs for four Whaitua have been received by Council:
 - a. **Ruamāhanga Whaitua Implementation Programme**, in August 2018 (Completion of the Ruamāhanga Whaitua Implementation Programme – Report 18.289)
 - b. **Te Awarua-o-Porirua Whaitua Implementation Programme and Ngāti Toa Rangatira Statement**, in April 2019 (Completion of Te Awarua-o-Porirua Whaitua Implementation Programme – Report 19.121)
 - c. **Te Whaitua te Whanganui-a-Tara Whaitua Implementation Programme and Te Mahere Wai o Te Kāhui Taiao**, in September 2021 (Te Whanganui-a-Tara Whaitua Implementation Programme and Te Mahere Wai o Te Kāhui Taiao – Report 21.422).
 - d. **Te Whaitua o Kāpiti**, in September 2024 (Te Whaitua o Kāpiti Implementation Programme – 24.458)
3. The Ruamāhanga and Te Awarua-o-Porirua WIPs were instructed by the NPS-FM 2014 (amended 2017), while the NPS-FM 2020 instructed Te Whanganui-a-Tara and Kāpiti WIPs.
4. This report is part of a six-monthly reporting schedule, collating information on key work being led by Greater Wellington and partners to implement WIPs. Progress reports are in **Attachment 1, Attachment 2 and Attachment 3**. Supporting slides are in **Attachment 4**.

Te tātaritanga

Analysis

5. In November 2024, Greater Wellington committed to shifting from reporting on individual recommendations to instead holistically reporting on WIP implementation through ongoing projects and delivered outcomes. This helps show how actions and projects deliver multiple recommendations and contribute to broader programme outcomes. The report highlights case studies and ongoing projects that demonstrate this alignment. Attachments provide concise statements on individual recommendations to maintain transparency and support informed decision-making.
6. A detailed analysis of recommendations from Te Awarua-o-Porirua and Ngāti Toa Rangatira Statement have been excluded from this report (and the appendix) as they have been included in the Porirua Harbour Accord catchment planning process. The recommendations from both these documents were an integral part of the three action planning workshops held in late 2025, which fed into the Harbour Accord prioritisation. A draft plan on the Porirua Harbour Accord and its progress will be delivered to the committee by June 2026.
7. To ensure implementation and reporting is consistent, a Whaitua Implementation Advisor role was established in 2025 after funding was approved in an earlier Long-Term Plan. The role supports transition to more holistic catchment planning, implementation, and reporting on work to deliver environmental, cultural, economic and community outcomes.
8. This report uses a new system developed to group and track recommendations consistently across multiple WIPs, meaning it is difficult to compare progress with previous reports. Overall, the updates still show steady long-term gains; we do not expect quick shifts in many places because of the need for multiple programmes and lags in environmental response. The new system gives a clearer view of the work under way and sets the foundations for future reporting.
9. The new categorisations indicate how much new work is required for implementation and a reason for the categorisation.

<i>Fully Implemented</i>	<i>No additional change or new work is required/cannot be further implemented</i>
<i>Partially Implemented</i>	<i>Implementation is underway, but not yet completed</i>
<i>Not Implemented</i>	<i>No progress to implement has been made, but is still possible to implement if situation changes</i>
<i>Won't Implement</i>	<i>Will not to implement due to varying reasons</i>
<i>Unknown Status</i>	<i>Unable to determine status</i>

Table of explanations for the 2025 implementation status

10. Actionable sub-recommendations have been created from across three WIPs that require non-regulatory action from Greater Wellington, mana whenua partners, territorial authorities, water service providers and communities. Approximately half are in progress. This does not include Te Awarua-o-Porirua as they transition to the

Harbour Accord action plan or Wairarapa Coast, which has not run a Whaitua development programme yet.

	Ruamāhanga	Te Whanganui-a-Tara	Te Mahere Wai	Te Awarua-o-Porirua	Kāpiti	Grand Total
Fully implemented	26	31	20	47	3	127
Partially Implemented	89	97	51	9	42	288
Not Implemented	13	46	42	6	148	255
Grand Total	128	174	113	62	193	670

Table showing breakdown of recommendations where non-regulatory actions are necessary (not requiring a plan or policy change) in the Ruamāhanga, Te Whanganui-a-Tara and Kāpiti WIPs.

Updates by Whaitua

Ruamāhanga

11. The Ruamāhanga WIP continues to guide Greater Wellington’s work in the catchment, with 109 recommendations spanning regulatory and non-regulatory actions.
12. When implementing the WIP, it is important to consider the context provided by the Wairarapa Moana Statutory Board. The Board was created as part of a Treaty settlement under the Te Rohe o Rongokako Joint Redress Act 2022 and held its inaugural meeting on 22 March 2024. The statutory purpose of the Board is to function as a guardian of Wairarapa Moana and the Ruamāhanga River catchment, ensuring their protection for both present and future generations.
13. As part of the settlement, legal ownership of Wairarapa Moana was transferred to the Ngāti Kahungunu ki Wairarapa Tāmaki-nui-a-Rua Settlement Trust and the Rangitāne o Tamaki nui-a-Rua Settlement Trust. This transfer honours the intent of the 1896 Tuku Rangatira, restoring tino rangatiratanga (authority) and kaitiakitanga (guardianship) to mana whenua over Wairarapa Moana and the Ruamāhanga River catchment.
14. The Board’s responsibilities extend beyond Wairarapa Moana, covering the entire Ruamāhanga river system. This broader remit will significantly influence decision-making processes for WIP implementation in the future.
15. The Ruamāhanga WIP emphasises a partnership approach, particularly through Recommendation 1, which promotes active mana whenua leadership and participation as fundamental to improving water quality and quantity management in the region.

Wairarapa Moana and Lower Ruamāhanga Valley

16. Restoring the health of Lake Wairarapa and Lake Ōnoke is a direction set out in the WIP. There are multiple recommendations that work toward restoring the health of Wairarapa Moana.
17. Ministry for the Environment (MfE) funding for the Wairarapa Moana Wetlands projected concluded at the end of June 2025 and Greater Wellington submitted its final Jobs for Nature report to MfE. Greater Wellington continues to work alongside

the appointing agencies of the Wairarapa Moana Statutory Board to continue this work. The co-ordination group, which is focussed on operational matters, meets regularly to connect partners on restoration and engagement work around Wairarapa Moana.

18. Key updates under the Wairarapa Moana Wetlands Project include:
 - a. The project hosted Universal College of Learning (UCOL) interns in December 2025 as part of their Level 2 Conservation qualification, gaining practical experience in conservation work within the region.
 - b. The annual kakahi count will be run by Greater Wellington staff in February 2026.
 - c. Greater Wellington will be supporting lakeside landowners with \$6000 towards their Canada geese cull. Geese are dominating the wetland and pose a biosecurity and water quality threat. The Statutory Board has approved this work.



Photo: Katie Brassell leads UCOL interns on a stream assessment of the Tauwharenikau river

19. The multi-year review of the Lower Wairarapa Valley Development Scheme (LWVDS) has advanced. An investigations programme has been scoped and is now underway. The investigations programme includes water quality, hydraulic modelling, and groundwater investigations, directly addressing WIP recommendations 32 and 33.
20. Recent updates regarding the LWVDS review investigations include:
 - a. We have recruited a project manager to oversee the investigations programme.
 - b. Hydrological modelling has been completed.
 - c. Topographic LiDAR survey has been completed, and a Bathymetric LiDAR survey is underway.
 - d. Fish surveys were undertaken in August and September
 - e. Planning is underway for a re-survey of turf plant communities along the eastern shoreline of Wairarapa Moana in early 2026.
 - f. Planning for a coastal/marine survey is underway for early 2026.
 - g. Staff are preparing a draft environmental monitoring plan for a trial to vary Barrage Gates operation. This work will support environmental and cultural outcomes under the LWVDS.

Wairarapa Water Resilience Strategy

21. The collaborative Wairarapa Water Resilience Programme brings together Rangitāne, Kahungunu, Greater Wellington, South Wairarapa District Council, Masterton District Council and Carterton District Council to oversee the implementation of the Wairarapa Water Resilience Strategy 2021 (WWRS) to help increase water security for people and the environment.
22. The Governance Group endorsed a high-level five-year work programme in June 2025. The WWRS umbrella covers five workstreams: natural attenuation, water allocation, water capture, water use efficiency, and land use change. Greater Wellington is involved across all the workstreams and takes the lead the natural attenuation and water allocation workstreams. With new mayors across the three district councils, the direction for the programme might change for this triennium.
23. A Wairarapa Economic Development Strategy-funded report “A Case for Action” has been finalised and is currently being designed for release. It summarises the issue and historic efforts on water storage, presents new economic modelling and evaluate the barriers to action. In a future-scenario that assumes water security, economic modelling predicts a \$1.5 billion annual GDP increase for the Wairarapa mostly on the back of horticulture and cropping opportunities that reliable water supply could bring.
24. A major milestone was the public release of the final SkyTEM groundwater model in July 2025 following targeted stakeholder engagement. This online map viewer is available to the public on the Greater Wellington website. Ongoing analysis will contribute to future water management decisions.

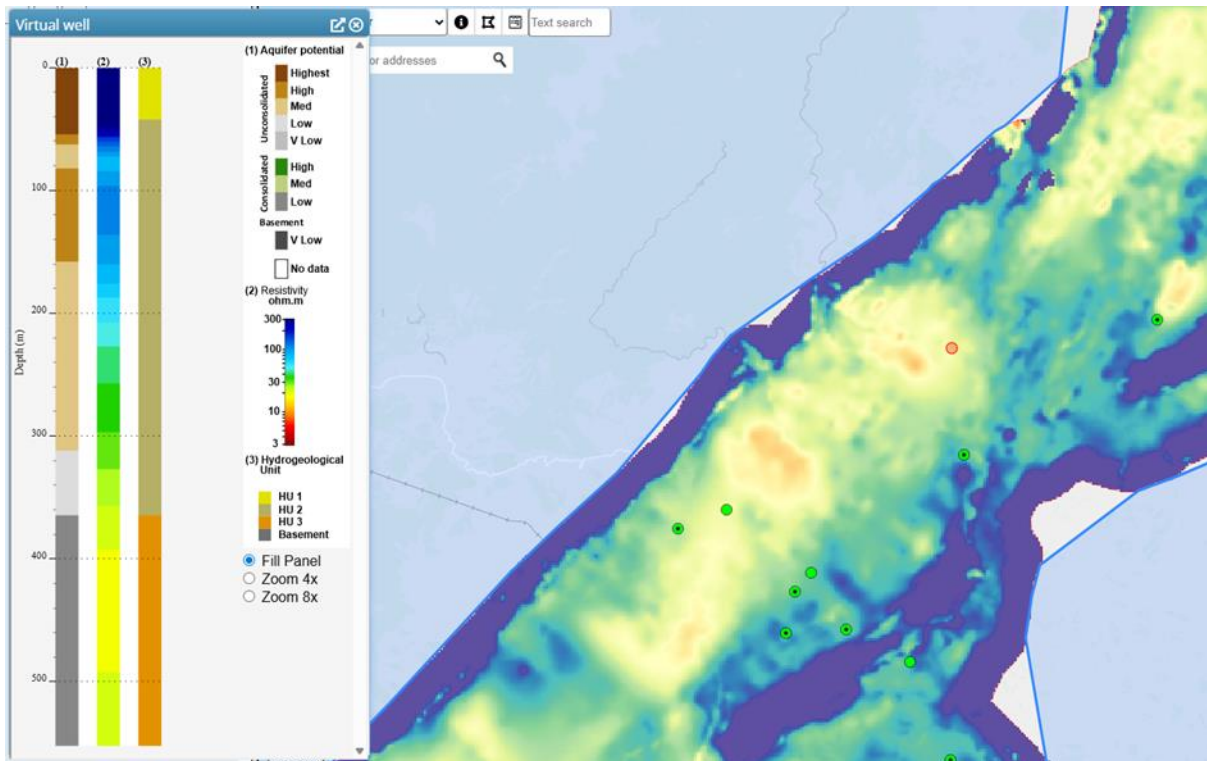


Image: An example screenshot of the SkyTEM online map viewer

Regulatory Change

25. Progress on regulatory recommendations has been constrained by national reforms. The Resource Management Amendment Act 2025 paused plan changes that would implement the NPS-FM, including a comprehensive Ruamāhanga plan change. In December 2025, the Planning Bill and Natural Environment Bill were released. Over the coming months, we will review these bills to determine how best to address WIP regulatory recommendations under the new system.

Wairarapa Catchment Collective

26. Catchment groups remain central to delivering non-regulatory WIP recommendations, particularly those supporting landowners and improving freshwater outcomes at the sub-catchment scale. There are now nine established Catchment groups in Ruamāhanga. The emerging Pirinoa group held its inaugural meeting in July 2025 and there is enthusiasm to form a catchment group.



Photo: Senior Catchment Advisor Sasha Smith water monitoring with the Whangaehu Bideford Catchment Group

27. Catchment groups have proved to be a useful grouping for landowners to collectively meet with Greater Wellington on issues. For example, Greater Wellington met with Taueru and Whangaehu landowners from the Whangaehu-Bideford Catchment Group to discuss the outcomes of the post-Cyclone Gabrielle Willow Removal Project. Greater Wellington staff will provide updates on actions coming out of this meeting via the catchment group.
28. Greater Wellington's direct support for farmers through our environmental restoration support and Wairarapa Catchment Collective is a key way of achieving WIP outcomes especially while regulatory interventions are on hold pending changes to the Resource Management system.

Te Awarua-o-Porirua

Proposed Plan Change 1 to the Natural Resources Plan

29. Nearly half, 44 or 41%, of recommendations required regulatory change for full implementation. Plan Change 1 (PC1) has progressed 38 of these regulatory change recommendations so they are now fully implemented with a further three supported or partially implemented.
30. At the direction of central government, all remaining hearing processes for PC1 were paused until a further decision on continuing is made in 2026. This decision

follows the Council's resolution on 26 June 2025 to wait for an amended NPS-FM before proceeding.

31. PC1 remains in effect for new resource consent applications; however, the decision to pause means the full hearings and appeals processes towards a fully operative plan have not been completed. The PC1 process may resume when there is greater certainty on the direction of the amended NPS-FM (which may be post-Cabinet decisions and prior to gazettal). This was signalled to occur in early 2026.

Mahi on the ground

32. Work on the ground in the Porirua catchment has continued while work has been underway to develop the catchment action plan. Mahi includes restoration (planting and pest control), fish barrier mitigations, research and monitoring and supporting schools and community.
33. Since the retirement of grazing in Waitangirua (western Belmont Regional Park), there have been more than 600,000 plants planted, covering more than 240 hectares, as part of Recloaking Papatūānuku. For winter 2025, we planted approximately 36 hectares with nearly 90,000 plants.
34. Through Greater Wellington's fish passage programme, Te Rūnanga o Toa Rangatira (TRoTR) has led an innovative project to trial the use of natural spat ropes woven from ti kouka (cabbage tree) fronds. Spat ropes are used to assist climbing fish species in navigating barriers such as perched culverts and steep channels. While having a shorter life span than polypropylene spat ropes, using natural products means less pollution from plastics. This method demonstrates the success of using mātauranga to solve problems.



Photo: Spat ropes woven from ti kouka (cabbage tree) fronds presentation at workshop

35. The Te Awarua-o-Porirua co-monitoring project was designed to provide a current state snapshot of culturally important awa. The project was a Ngāti Toa-led kaupapa in collaboration with the New Zealand Institute for Public Health and Forensic Science (formerly ESR), Greater Wellington and Porirua City Council. Six sites were monitored and results indicated high levels of *E. coli*, nitrogen,

phosphorus, and fine sediment, as well as concerning low levels of dissolved oxygen. The collaborative approach of the co-monitoring project allowed us to draw on multiple sets of knowledge to produce a holistic overview of the stressors affecting Te Awarua o Porirua.



Photo: Wai-Maori monitoring at Kahotea Stream

36. The Guardians of Pāuatahanui Inlet held their 12th triennial cockle survey in November 2025. This is the longest-running citizen science survey in Aotearoa. Cockles are a key indicator of harbour health, and volunteers counted and measured them at 30 sites around the inlet. Greater Wellington supported the event through promotion, volunteer recruitment, leading groups at site and funding the survey report by Earth Sciences, due early 2026.



Photo: Cockle from count estuary at Pāuatahanui

To learn more about the survey and view previous reports go to: <https://gopi.org.nz/cockle-surveys/>

37. Celebrating two decades of volunteer work restoring Whitireia Park, the Whitireia Park Restoration Group (WPRG) planted 1,200 natives in fire-damaged Onehunga Valley. The event brought together 100 volunteers, and was supported by Greater Wellington, TRoTR, the Whitireia Park Board, and the wider community. Groups like WPRG are key to restoring the catchment and supporting Accord mahi.



Photo: post-planting celebration speeches and BBQ at Whitireia Park

Development of an action plan

38. Porirua Whaitua implementation is centred on developing a catchment action plan, the core deliverable under the Harbour Accord signed on Waitangi Day 2025. The draft plan draws on inputs from the Porirua WIP (2019), Ngāti Toa Statement (2019), Porirua Harbour Strategy 2015, and existing projects. It focuses on reducing sediment and contaminants, restoring watercourses, improving stormwater and wastewater systems, enabling fish passage, and strengthening community connection to wai. The plan will eventually supersede the WIP as the central agreed set of directions and aims to restore Te Awarua-o-Porirua's health through collaboration and pooling of resource.
39. The Porirua Harbour Action Plan will provide a coordinated framework for partners to plan and deliver work programmes. It will set out scope, costs, timeframes, roles and monitoring, and will identify short, medium and long-term actions, some feeding into councils' 2027–37 Long Term Plans. The plan creates opportunities for alignment of projects across Greater Wellington, Porirua City Council, and Wellington City Council and is primarily non-regulatory, though linked to regulatory programmes already addressed through Regional Policy Statement and Natural Resources Plan changes.
40. Building on the three workshops held in August and September 2025, which prioritised actions for reducing sedimentation, reducing pollutants and restoring habitats, partners will now refine and align these actions. More than 120 actions drawn from key documents and existing programmes were assessed for effectiveness and feasibility, with additional suggestions captured where gaps were identified. This process confirmed that many of our existing programmes (high feasibility and effectiveness rankings) are doing great work and may just need more resourcing or to focus on different locations. The next steps involve translating these priorities into a coordinated plan with clear roles, timeframes and performance measures, guided by te ao Māori and mātauranga Māori perspectives through the Mauri Ora framework.

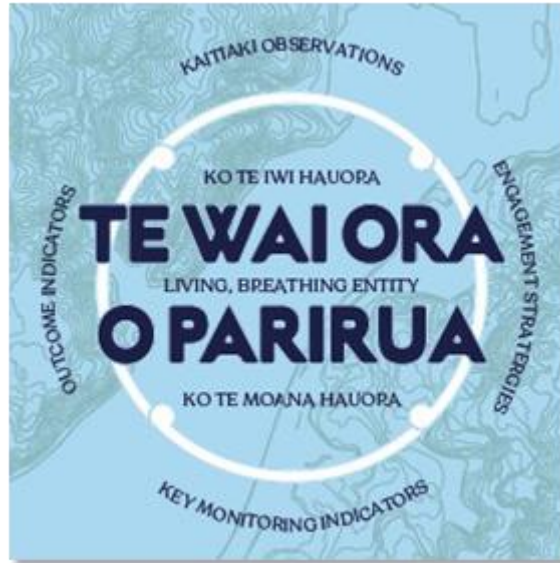


Photo: Porirua Harbour Accord Action Planning workshop at Mana Cruising Club

41. The next phase will focus on inter-agency working groups scoping out the 15 priority actions identified through recent workshops. This includes confirming resourcing across agencies, finalising action details such as deliverables and timelines, managing community input and expectations, and developing a robust monitoring framework to track progress against outcomes. Funding opportunities and trade-offs will also need to be considered to ensure priority actions can be delivered.

Mauri Ora Framework

42. Te Runanga o Toa Rangatira (TRoTR) taiao tīma (environment team) has led the development of a *Te Wai Ora o Parirua Framework* – a Mauri Ora Framework. The framework is centred around the principle “Ko te iwi hauora, ko te moana hauora,” meaning that if the people are healthy, the harbour is healthy, and vice versa.



Graphic: Mauri Ora Framework

43. Mana whenua maintains intergenerational relationships with te taiao (the natural world) through kōrero tuku iho (stories handed down) which enables the exercise of tikanga (customary practice) and kawa (protocol), kaitiakitanga (guardianship), and manaakitanga (care and hospitality). These relationships and active kaitiaki (guardians) are expressed in mahinga kai (food gathering places and practices) traditions and accessible and healthy kaimoana (seafood).
44. The Mauri Ora framework outlines key outcomes expected from the Accord mahi covering cultural, spiritual, economic, and recreational values such as mahinga kai (traditional food), waka ama (canoeing), swimming and ōhanga (business) opportunities, as well as taiao outcomes such as improved aquatic and terrestrial life, clean water and natural shoreline and landscapes.
45. The two key outcomes chosen by TRoTR to focus on for the prioritisation of actions are expressing kaitiakitanga (guardianship) and the vitality of te taiao.

Broader engagement

46. Through the Accord action planning workshops, we have engaged broadly with central government agencies that have a key role in the harbour like: New Zealand Transport Agency, KiwiRail, Earth Sciences NZ, Fish & Game, and the Department of Conservation. The workshops have also had active participation from community groups such as Porirua Harbour Trust, Guardians of Pāuatahanui Inlet, Pāuatahanui Catchment Group, Whitireia Restoration Group, Friends of Taupō Swamp, Rotary Plimmerton, Pest Free Porirua, Wesley Community Action, as well as Mountains to Sea Wellington.



Photo: workshop participants doing an exercise to show how actions will achieve outcomes at the Mana Cruising Club.

Te Whaitua te Whanganui-a-Tara / Te Mahere Wai o te Kāhui Taiao

47. Te Mahere Wai (TMW) and the Te Whanganui-a-Tara (TWT) WIP underpin many of Greater Wellington’s priorities and work programmes.

Natural Resources Plan Change 1

48. As in Te Awarua-o-Porirua, PC1 incorporated many of the regulatory recommendations in TMW and the WIP. Regional council regulation is a key lever for improving water quality, particularly in urban areas where there are fewer opportunities for on-the-ground action (discharges of stormwater and wastewater need to be regulated). While PC1 still has regulatory effect, the pause has created uncertainty around the regulations and timeframes for achieving targets.

Gollan’s Valley Station and the Parangārehu Lakes

49. The Parangārehu Lakes sit within a wider land area that holds Lake Kōhangapiripiri, Lake Kōhangaterā, Gollans Stream, and many small tributaries. The lakes and surrounding area are managed through Rōpū Tiaki, a co-management group between Greater Wellington and Port Nicholson Block Settlement Trust.
50. The lakes are the “jewels in the crown” of TWT, and Taonga Nui-a-Kiwa for Taranaki Whānui, who regained the lakebeds through their Treaty settlement. Te Mahere Wai contains a number of recommendations to improve the health of the lakes.
51. In 2025, Greater Wellington purchased Gollans Valley Station connecting the East Harbour Regional Park’s northern forest to Parangārehu Lakes, providing the opportunity for a continuous protected area from the Wainuiomata saddle to the sea at Pencarrow. As the property drains wetlands through Gollan’s Stream to the lakes, Greater Wellington can now improve the management of the land, and significantly reduce discharges of sediment and nutrients, which have been detrimental to the lakes for many years.



Photo: Gollans Valley Station with the Parangārehu Lakes in the distance

Waiwhetū Catchment Integrated Project

52. TMW and the WIP emphasise the significance of the Waiwhetū awa, aquifer and estuary, and include numerous recommendations for restoring health and protecting the health of the community.
53. Waiwhetū Awa is scheduled as Ngā Taonga Nui-a-Kiwa for TRoTR and Taranaki Whānui in the Natural Resources Plan. It has sustained iwi over many centuries, with Waiwhetū Pā and Owhiti Pā being two important pā on the awa. Waiwhetū Awa and the Waiwhetū Estuary were vital sources of mahinga kai and freshwater.
54. The Waiwhetū Aquifer supplies up to 70 percent of the Wellington metropolitan drinking water.
55. Waiwhetū Awa is assessed as Wai Kino (unsafe water) on the Te Oranga Wai Mana Whenua assessment framework. This is primarily due to the presence of human waste (represented by high *E. coli* readings). It also has poor macroinvertebrate diversity, high levels of deposited fine sediment, dissolved reactive phosphorus, dissolved copper, and dissolved zinc, and low levels of dissolved oxygen.
56. Recent wastewater discharges and overflows to the Waiwhetū Awa include:
 - a. Seven network overflows in the past 12 months.
 - b. 18 consented discharges from Seaview Wastewater Treatment Plant due to wet weather (FY24/25).
 - c. Four unconsented discharges from Seaview due to mechanical failures (FY24/25).
57. TMW and the WIP emphasise that improving urban streams like Waiwhetū will require collaboration and sharing of power and resources between Greater Wellington, territorial authorities, mana whenua, and the community. The range of interrelated work in the Waiwhetū catchment by Greater Wellington, Hutt City Council (HCC), Wellington Water Ltd (WWL), Ātiawa Nui Tonu (which is used to

denote iwi-wide representation beyond the different Taranaki Whānui legal entities in the rohe including Port Nicholson Block Settlement Trust, TRoTR, and the Wellington 10ths Trust) and the community (led by the Friends of Waiwhetū) provide strong justification for integration.

58. Since the June 2025 Report (WIP Implementation Reporting – Report 25.172), two wānanga have been held to build shared understanding of issues, challenges potential opportunities and actions, and to strengthen collaboration under Te Rūnanganui o Te Āti Awa leadership. Ātiawa Nui Tonu welcomed the intent, while pointing out that many generations have been let down. They are keen to see effective action, rather than just engagement and discussion, to ensure good intentions result in positive outcomes.
59. The Greater Wellington team working on fish passage have identified five barriers in the Waiwhetū Awa. Remediations are planned and could include installing fish ramps, rubber ramps and baffles, which backwater the flow. This implements WIP recommendations 75 and 76 letting the fish move freely throughout the whaitua.



Photo: Waiwhetū Wānanga

Pōneke Awa Connection Project

60. Greater Wellington has contracted a project to identify and map urban streams in central Wellington. The work covers Waitangi, Papawai, Moturoa, Waimapihi, Waikoukou, Kumutoto, Tutaenui, Waipiro, Pipitea, Tiakiwai, Whakahikuwai, Pakuao/Waipaeākā, and Kaiwharawhara. The team is also assessing a possible fourteenth unnamed stream recorded on mid-nineteenth century maps of the city.
61. The project will create an online map that shows each awa's place, above ground reaches, catchments, and headwaters. It will share the history and whakaaro (ideas and beliefs) linked with these streams. The project team will track stream health through Stream Health Monitoring and Assessment Kits (SHMAK), eDNA tests, and fish counts. The work will also spot community groups in these catchments. It will look at choices for street signs and names for streams that have

none. The map and notes will link with data held by partners such as Wellington City Council and NIWA maps, showing ground reaches, catchments, and headwaters. It will highlight and educate on the historical and cultural features of key interest in the area.

62. The project lead is now working with the Wellington Botanic Gardens to improve how Pipitea Awa is shown and understood within the Gardens. The lead has also been approached by Wellington City Council, who has sought a Blue Network map for some time. These actions may lead to opportunities to explore joint work and open a path toward an inter-council project. Additionally, the lead is pursuing options for regulatory change that will support recommendation 99, which calls Greater Wellington and territorial authorities to make polluters directly answerable to the affected awa and its community.



Ngaokeoke (velvet worm) is a rare invertebrate found in native forest habitats. Its presence signals high ecological integrity and highlights the need for ongoing protection of these environments. Found by the Kumutoto Stream Restoration team.



Greater Wellington Fish Passage ranger educating community volunteers on local fish species found in the Kumutoto river

Haewai/Houghton Valley Project

63. In 2024, Greater Wellington allocated funding to support the design of a long-term catchment solution to the historic landfill leachate problems and community visions of restoring Te Mana o te Wai within the Haewai/Houghton Valley catchment.
64. The project involves mana whenua, community, Wellington City Council and Wellington Water Ltd. This support gives effect to TWT WIP recommendation 13 for more collaborative projects with communities to support catchment-based planning and local actions.
65. The project will deliver a consensus report that includes mana whenua and community values and holistic outcomes for the catchment, landscape visuals representing the vision, analysis of existing technical work on solutions, and options for future work to realise the outcomes.

Te Mārua Water Treatment Plant upgrade

66. Greater Wellington, through Wellington Water, is upgrading the Te Mārua Water Treatment Plant to ensure a reliable and safe drinking water supply for the region. As of April 2025, commissioning of the Dissolved Air Flotation (DAF) system is in its final stages, enabling the plant to deliver an extra 50,000,000 litres of water per day by removing suspended solids and contaminants. The upgrade also includes improved chlorine dosing and infrastructure to meet water quality standards and strengthen network resilience, supporting WIP recommendations to protect freshwater and provide secure supply for communities.

Kia Mauriora te Kaiwharawhara / Sanctuary to Sea project

67. This project connects the efforts of mana whenua, councils (Greater Wellington and Wellington City Council), community action, businesses, students, and researchers towards common catchment outcomes, through the anchoring organisation and host, Zealandia.
68. In the WIP and TMW, the Kaiwharawhara is noted as a priority catchment for freshwater improvement and this initiative is consistent with recommendations for collaborative catchment action planning.
69. Many innovative and volunteer-led projects have occurred through the support of this initiative. In 2025, three working groups were established (community, technical and storytelling) to lead projects in areas where the strategic objectives in the 10-year strategy¹ were not being fully addressed by other community or organisational action.

Whakawhirinaki Silverstream Pipe Bridge

70. The Whakawhirinaki Silverstream Pipe Bridge is a replacement of the critical water supply asset across Te Awa Kairangi/Hutt River. The solution to ensure reliable water for residents of Upper Hutt, Stokes Valley and Porirua. This shows integrated thinking by also improving resilience from seismic and flood events and being a key asset for maintaining operational flexibility and supply capacity for the region. It is also a valuable community asset, giving walkers and cyclists access across the river, increasing opportunities to connect to awa, and aligns with other environmental projects

Progress update from Wellington Water

71. Wellington Water has provided updates on work in the past reporting period (July-December 2025) to cut wet-weather overflows, find and fix inflow and infiltration, reduce sludge sent to landfill, guide industry on stormwater practice, and set out roles for sump clearing. Their updates show major upgrades across the wastewater network, strong investigation, and renewal work to limit contamination, steady progress on sludge minimisation, and ongoing links with industry to lift stormwater standards. The work signals gains across key parts of the network and reflects joint effort with the metro councils.

1 www.visitzealandia.com/about/our-work/sanctuary-to-sea/

72. The metro councils, through Wellington Water, are investing in major wastewater network upgrades to reduce wet-weather overflows. A key project is the \$97 million Porirua containment tank, which will store up to 7,000,000 litres of excess wastewater and stormwater during heavy rain, reducing discharges to Porirua Stream and Te Awarua-o-Porirua Harbour. Construction is underway and scheduled for completion in 2026. Additional upgrades, such as new rising mains and pump stations in Wellington City's central business district, have increased network capacity and resilience. Wellington Water also runs an ongoing programme of pipe renewals and relining to reduce infiltration and contamination, with recent works showing significant reductions in *E. coli* levels.
73. To address inflow and infiltration, Wellington Water undertakes targeted investigations using flow monitoring, smoke and dye testing, CCTV inspections, and property checks. Faults are repaired on the public network or referred to property owners for correction. The "Knowing Your Pipes" programme in the Hutt Valley has assessed more than 600 properties and repaired defects, resulting in marked improvements in water quality. In Porirua, 19 illegal stormwater and wastewater connections were identified and fixed through collaboration with homeowners and council.
74. Work is also progressing to reduce sludge disposal to landfills. Construction of Te Whare Wai Para Nuku, a sludge minimisation facility at Moa Point, is underway and will cut sludge volumes by up to 80% and emissions by 60% through thermal hydrolysis and anaerobic digestion. Completion is expected in 2026. Wellington Water has updated its biosolids strategy to support further reductions and is collaborating with councils to advance regional solutions. Reporting on the significant Moa Point sewage issue will be picked up in a future reporting period.

Kāpiti

75. The updates provided for Kāpiti WIP are examples of new work undertaken since receiving the WIP in 2024. Attachment 3 contains progress updates on recommendations. These do not yet account for all current business-as-usual work occurring because the detailed work on action plans for each freshwater management unit has not begun.

Kāpiti Whaitua Governance

76. A primary focus of Kāpiti Whaitua implementation over the last six months has been establishing a dedicated partnership group to oversee WIP implementation. Chaired by Kim Tahiwī, CEO of Ngā Hapū o Ōtaki, the group includes senior representatives from Ngā Hapū o Ōtaki, Te Ātiawa ki Whakarongotai, TRoTR, Kapiti Coast District Council (KCDC), and Greater Wellington.
77. Since the group's inaugural meeting in February 2025, it has finalised its Terms of Reference, set up a kaimahi working group with members from each organisation, and undertaken prioritisation of recommendations.

Summer monitoring delivered by iwi partners

78. During WIP development, water quality data gaps were identified and a three-year monitoring programme established to address these. The first and second years

focused on dissolved oxygen and this year will be collecting baseline information for the mahinga kai attribute for 10 freshwater management units.

Proposed Kāpiti groundwater model redevelopment

79. Greater Wellington’s current groundwater model for Kāpiti is due to be updated. A joint hui with Ngā Hapū o Ōtaki, Te Ātiawa ki Whakarongotai, TRoTR, Kapiti Coast District Council, and Greater Wellington was held to discuss the objectives and scope of the model that we would like to develop. The costs and complexities involved in achieving the range of objectives discussed at the hui. Current work being undertaken includes:
- a. Assessments of the quality, spatial coverage, and temporal resolution of existing data are currently being undertaken.
 - b. An evaluation of what objectives or questions can be addressed with the current data and identifying any additional data requirements.

AWE Educational Programme

80. AWE is a learning experience from the taiao, to the taiao. Te Mauri o Wharemauku education programme has been trialled by Enviroschools, funded by KCDC and Greater Wellington. The programme facilitated by Sharlene Moate-Davis supports teacher professional development workshops exploring different places and states of mauri on the Wharemauku. The first event was held in August 2025 and had 16 attendees, including teachers from local early childhood education organisations, primary and high schools, as well as kaimahi from Te Ātiawa Ki Whakarongotai.



Photo: Participants in the AWE training

81. Participants explored how mātauranga Māori is providing an ara Rongoā, a healing pathway, for the freshwater ecologies of the awa, and heard about the Kāpiti College māra kai that involved full school and community effort.

Waikanae Ki Uta Ki Tai

82. A new “rock ramp” has been built in the Wharemaukū Stream, to help threatened and at-risk native fish move safely upstream, and it is the first of its kind in the Wellington Region. The rock ramp was built under Waikanae Ki Uta Ki Tai, a partnership between Ātiawa ki Whakarongotai, KCDC, Greater Wellington, and the Department of Conservation. The design uses a series of natural rock steps and resting pools to slow the flow and deepen the water, enabling species like piharau (lamprey), whitebait species, bullies, and tuna (eels) to navigate the culvert safely.



Photo: Te Ātiawa ki Whakarongotai kaimahi with support from Greater Wellington Fish Passage team installing woven natural fibre fish ladders to support fish passage in the Kākāriki stream. Source: Kāpiti Coast District Council

83. Partners are developing their 2026/27 financial year delivery plan. A recent review of ecological monitoring on the river has highlighted the challenge of sharing up-to-date monitoring information with partners and the community. Greater Wellington is creating a prototype monitoring portal to display existing monitoring information.



Photo: Waikanae ki uta ki tai river restoration

Wairarapa Coast Catchment

Catchment Plan

84. The Wairarapa Coast WIP development is being done under Greater Wellington's wider catchment approach. This approach is designed to take a whole of the catchment perspective with the intent to develop an implementation-led catchment plan that is broader in focus than only the NPS-FM. It will bring together hapū and iwi values with rural catchment community visions and outcomes to inform decisions based on sub-catchment priorities. The resulting plan will be broader than only freshwater outcomes and centre around a holistic plan for multiple outcomes at place.
85. This catchment plan encompasses other related activities e.g., farm plans, freshwater action plans, community catchment action plans. Work is underway on how these examples can be woven together in an integrated plan that connects processes and can then be assessed against NPS-FM requirements. It will also benefit from taking lessons from Kāpiti and other Whaitua processes.



Photo: Typical Wairarapa Coast Catchment area

Collaborating with community on action plans

86. Catchment action plans are being completed with catchment groups across the coast. There are currently four action plans under development across the Wairarapa Coast catchment. These cover about 50% or 127,744 hectares out of 247,000 total hectares.

87. These plans are iterative. They include community values, vision, objectives, and outcomes. They have an action plan that outlines key projects connected to the outcomes. These action plans will be used to identify gaps and opportunities across the catchment for future funding and targeted effort from Greater Wellington and other partners to help ensure works are outcome focused at an appropriate scale.
88. Partnering with mana whenua of the Wairarapa is essential to the success of developing Whaitua programmes, and we recognise the need to have mana whenua involvement from the outset. We continue to strengthen our relationships with mana whenua, and early discussions have been had with Rangitāne to explore the design of the Whaitua development. Both iwi have indicated that hapū involvement will be a key focus of this Whaitua. These conversations are in progress. Greater Wellington is also looking forward to progressing this important kaupapa with Kahungunu ki Wairarapa for rangatiratanga outcomes.

Tinui-Whareama

89. The Tinui-Whareama group has a catchment action plan and is due for a review in early 2026. They have continued water quality monitoring in the Whareama and Tinui Rivers to gain better insights into the current state of the awa. The group has a inanga spawning project and students will undertake actions to restore the inanga spawning habitat. The results of the project will then be presented to the wider Whareama Tinui Community. The group has been focused on pest control. They did some community pest animal monitoring and have deployed pest traps, funded by Greater Wellington.



Map of Tinui Catchment Action plans by location

Homewood

90. Pest control is an integral part of catchment groups' action plans and visions. It supports a range of outcomes from reversing biodiversity loss and preventing the spread of disease, to water quality and animal health. There are different pest animal challenges and outcomes they want to achieve on the eastern coastal side

of the catchment, versus the western side that is adjacent to large tracts of native and exotic forests.

91. The Homewood group is working with Greater Wellington to increase the trap lines. The group and Greater Wellington have extended the key native ecosystem (KNE) areas and are using Greater Wellington staff to support the group's effort to get more effective pest control over a larger area.

Wainuioru

92. This group has been focusing on maintenance of the crack willows that were controlled under their One Billion Trees/Jobs for Nature project. This is ensuring the success of the landscape scale native planting the group has done, it is also maintaining the flow of the Wainuioru River, which is helping manage flooding impacts. Greater Wellington, Wairarapa Catchment Collective, and the group are working together on a pest project. This is to understand more about the possum population and to create a plan to control.

Ngā hua ahumoni

Financial implications

93. There are no new financial implications arising from this report as work programmes giving effect to WIP recommendations as reported are covered by existing funding.
94. Regulatory components of WIPs have been and will continue to inform plan change programmes as and when these are progressed against the backdrop of changing national direction.
95. Non-regulatory elements will continue to be prioritised and resourced through the Long Term Plan and Annual Plan processes and internal change control management considerations as part of wider funding and prioritisation requirements.

Ngā Take e hāngai ana te iwi Māori

Implications for Māori

96. This report demonstrates progress through case studies and updates on areas where collaboration with mana whenua is occurring. Implementation of WIP recommendations, including TMW, supports cultural health outcomes by improving water quality and catchment health, enabling kaitiakitanga and cultural practices such as mahinga kai. These improvements contribute to restoring the mauri of waterways and strengthening the ability of iwi and hapū to exercise their responsibilities as kaitiaki.
97. The report also highlights tangible benefits of working in partnership. Recent land purchases in Gollans Valley will enhance biodiversity and contribute to mana whenua and Greater Wellington shared values of uplifting biodiversity in Te Whanganui-a-Tara, and provides a platform that upholds kaitiakitanga, mana and enduring partnership with Taranaki Whānui. Similarly, the Harbour Accord implementation in Porirua, led by TRoTR, enables enduring collaboration to restore

catchment and harbour health, aligning technical expertise, mātauranga Māori, and shared governance to deliver collective impact across agencies with statutory responsibilities for the awa. These initiatives support the exercise of Māori rights and interests while advancing shared taiao outcomes for Mana Whenua and Greater Wellington.

98. Early planning and prioritisation processes create opportunities for co-governance and co-design, reinforcing partnership principles and strengthening relationships. Recommendations align with the hierarchy of obligations under Te Mana o te Wai, noting that future application may be influenced by resource management reforms. Greater Wellington is also exploring ways to embed mātauranga Māori indicators alongside conventional metrics, ensuring that both western and indigenous science guide freshwater management and provide a more holistic view of catchment health and progress.
99. Mana whenua's time and resource have been diverted to urgent government reform responsiveness, which has stretched their capacity. Despite this, mana whenua continues to work for environmental outcomes alongside Greater Wellington and lead significant impact projects and initiatives.

Ngā tūāoma e whai ake nei

Next steps

100. Environment Group will continue working with mana whenua and others to prioritise implementation of recommendations.
101. Environment Group will provide ongoing updates through internal business planning and prioritisation processes and seek input from external groups implementing recommendations.
102. Environment Group will continue to improve public-facing information and create a dedicated space to present progress updates.
103. The Whaitua implementation advisor will work to identify recommendations that deliver the greatest positive impact and prioritise inclusion in the Long Term Plan process.
104. The next six-monthly progress reports for Whaitua Implementation will be published in June 2026.

Ngā āpitihanga

Attachments

Number	Title
1	Whaitua Implementation Programme – Progress Reporting – Te Whanganui-a-Tara (TWT and TMW)
2	Whaitua Implementation Programme – Progress Reporting – Kāpiti
3	Whaitua Implementation Programme – Progress Reporting – Ruamāhanga
4	Whaitua Report supporting slides

Ngā kaiwaitohu

Signatories

Writers	Joshua Ruddock – Whaitua Advisor Catchment Tim Sharp – Catchment Manager, Te Whanganui-a-Tara Pete Huggins – Catchment Manager, Ruamāhanga Jimmy Young – Catchment Manager, Te Awarua-o-Porirua Michele Frank – Catchment Manager, Kāpiti Tash Styles – Catchment Manager, Wairarapa Coast Kara Kearney – Te Hunga Whiriwhiri Partnership Manager
Approvers	Nicola Patrick – Director, Catchment Lian Butcher – Group Manager, Environment

He whakarāpopoto i ngā huritaonga
Summary of considerations

Fit with Council's roles or with Committee's terms of reference.

The Environment and Climate Committee has a responsibility to review periodically the effectiveness of implementing and delivering Council's environmental strategies, policies, plans, programmes, initiatives, and indicators as specified in clause 2.5(a)(i).

Contribution to Annual Plan / Long Term Plan / Other key strategies and policies

Implementing Whaitua Implementation Programmes is a core activity in the Long-Term Plan for Rōpū Taiao Environment Group.

Internal consultation

This report and its attachments have been led by Catchment, supported by Te Hunga Whiriwhiri.

All business units in Rōpū Taiao Environment Group and Te Hunga Whiriwhiri have contributed to the report as implementation requires work from across the groups.

Risks and impacts - legal / health and safety

There is environmental, human health, reputational and legal risk if the Whaitua Implementation Programmes are not implemented to restore freshwater habitats in the Greater Wellington region. Environmental risks include continued decline of water quality and biodiversity, impacting the health and lifecycles of freshwater and marine species. Human health risks are associated with heavily contaminated waterbodies where people recreate and gather mahinga kai. Reputational risk includes that our mana whenua partners and communities consider that implementation has not been given sufficient priority, given the time, knowledge and direction provided in the Whaitua Implementation Programmes. Council is at legal risk if the statutory obligations of the NPS-FM 2020 are not met.