

Upper Ruamāhanga/Waiōhine/Lower Ruamāhanga Advisory Group Member Position Description

We want your help to shape how we work with the rivers across the Ruamāhanga catchment, to keep communities safe from flooding.

Flooding is New Zealand's number one hazard. Across the Greater Wellington region the majority of our towns are located on the floodplains of major rivers, with around 30% of our population living in flood prone areas.

Greater Wellington is responsible for managing the flood risk from major rivers and streams in the Wairarapa. To manage this risk we strive to find ways to work with our rivers. Allowing rivers to undertake natural processes is balanced with ensuring appropriate levels of protection to communities.

Local voices play an important role in this, so to allow for this local advice on the management of flood and erosion risks the following Advisory Groups have been established:

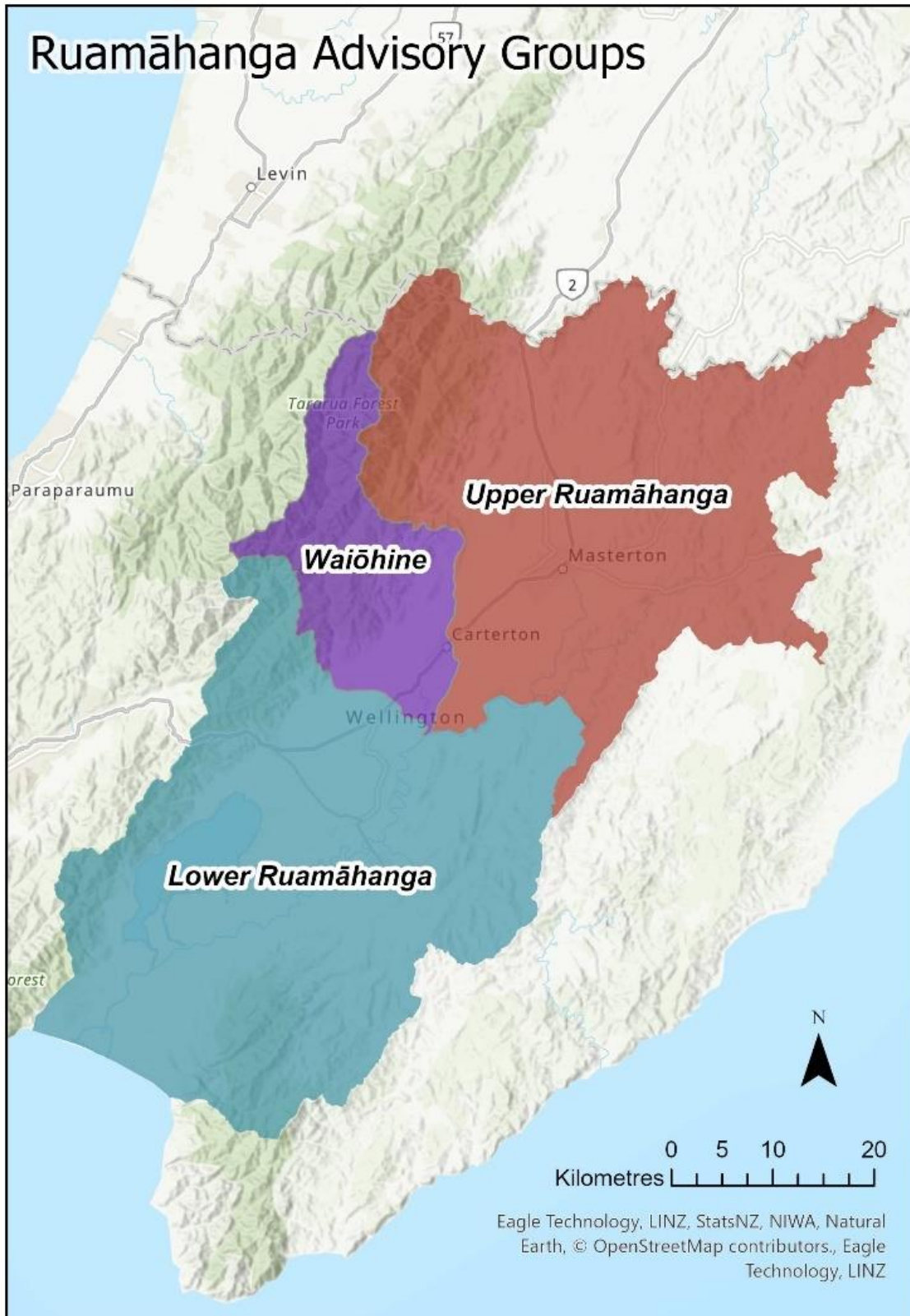
- The Upper Ruamāhanga Advisory Group
- The Waiōhine Advisory Group
- The Lower Ruamāhanga Group

These three groups provide advice to Greater Wellington's Environment and Climate Committee. You can find out more about the full Greater Wellington committee and advisory body structures [here](#).

For the [Upper Ruamāhanga](#) and the [Waiōhine](#), each has their own floodplain management plan that provides the strategic direction for how Greater Wellington manages flood and erosion risk.

There is currently no floodplain management plan or catchment plan for [the Lower Ruamāhanga](#). Greater Wellington is currently running a process to review flood protection in this area and to develop a long-term strategy.

You can view the full list of rivers and streams Greater Wellington is responsible for in the Wairarapa [here](#).



What do these Advisory Groups do?

These Advisory Groups provide advice to Greater Wellington's Environment & Climate Committee and to staff in Greater Wellington's Environment Group on flood and erosion protection matters. In particular:

- a) River and erosion management proposals and reports, including:
 - I. Capital and maintenance work
 - II. Annual work programmes and budgets,
 - III. Floodplain management strategies, and
 - IV. Integrated and collaborative management opportunities; and

- b) Community engagement approaches that support wider awareness of river and erosion management proposals, projects, and changes in the respective areas.

Decisions around flood and erosion risk management sit with Greater Wellington's Council or Environment Group officers. Each Advisory Group provides a vital connection and conduit to locals whose advice and recommendations are an important part of this process.

You can read the full terms of reference for each Advisory Group [here](#).

What's the job?

We are looking for members to join each Advisory Group for the current triennium (2025 – 2028).

You will sit alongside councillors from your local council and Greater Wellington providing advice and input to help guide the way floods and erosion are managed in your area.

We want you to bring your knowledge and experience to the table, and hope that you can also bring along wider views from your local community.

You will be required to attend at least two, two-hour, in person meetings held in the Wairarapa each year, and a half or full day out in the field to see work in action. There may be additional meetings held depending on work programmes. Members will be able to claim a GW standard meeting fee and travel reimbursement for their attendance at these formal meetings.

In advance of meetings you will be expected to read papers, background resources and any other relevant information.

At the meetings you will be expected to participate in group discussions, where you will need to listen and understand the views of others, and be open to a range of views and topics

discussed. Council's Te Tiriti o Waitangi principles must be applied when conducting these meetings, and your advice should also give consideration to Council's climate policies.

The term of the role is from now until late 2028 (end of the current local government triennium). At the end of this period, pending a Greater Wellington Council decision, the Advisory Group will be dissolved.

What you'll bring to the Advisory Group (knowledge, skills & experience)

You don't need to be a river expert to join the Advisory Groups, we just want passionate people to participate and help shape the way we manage flood and erosion risk across the Ruamāhanga catchment.

You will be required to meet at least one of the following criteria to join. These are either:

- That you care about a local river in the relevant advisory group area (Upper Ruamāhanga, Waiōhine or Lower Ruamāhanga), or
- Are a resident or rate payer in the area covered by an advisory group, or
- Are a sustainability advocate.

The following skills and knowledge would be helpful but are not essential:

- a. Knowledge or experience of relevant local history, the local natural environment and communities,
- b. Skills or experience in committee or group work in a professional setting,
- c. An awareness and understanding of Greater Wellington's role in flood and erosion risk management activities, how these activities are generally undertaken and their importance and impact on the environment and communities,
- d. An understanding and appreciation for Te Tiriti o Waitangi and the status of Maori as mana whenua,
- e. Knowledge of the relevant floodplain management plan or flood management scheme,
- f. An appreciation for the potential impact of climate change on local environments and communities,
- g. Experience with advising on approaches to enhance community engagement that supports wider awareness of proposals, plans, and changes,
- h. For those thinking of putting their name forward as Chair, Experience in chairing meetings and liaising with officers.

We also want to make sure we have a good representation across the community and incorporate a wide range of views in each catchment area. So let us know if you fit into any of the following:

- i. A local landowner within the scheme
- ii. An environmental or biodiversity advocate
- iii. Involved in emergency response, emergency management or civil defence
- iv. Involved in recreational activities in the Advisory Group area
- v. Part of a local community, neighbourhood or catchment group in the Advisory Group area
- vi. A cultural connection to the Advisory Group area
- vii. Have served on a similar committee or advisory group in the past
- viii. Are a professional in a related field
- ix. Are part of the agricultural or horticultural sector

It is preferential that you reside within the respective area for your chosen advisory group, however it's not essential. If you do not live within the area you will need to demonstrate a strong connection to it.

Apply now

Download application form and send to ruamahanga@gw.govt.nz or hand in hard copy to GW office by 5pm 27 February 2026.

We strongly encourage you to also attend one of our open nights to meet staff, learn about what's involved and ask questions to aid in the application process. These will be held from 5pm – 7pm on

- Tue 17 Feb at the Greater Wellington Masterton Office, and
- Wed 18 Feb at the Waihinga Centre (Town Hall) in Martinborough

For more information feel free to contact Amanda Death, Senior Catchment Advisor at ruamahanga@gw.govt.nz