

Safe boating can save you money

The Greater Wellington Regional Council's enforcement officers and Police maritime officers can issue infringement notices (instant fines) for breaches of the Wellington Navigation and Safety Bylaws.

SOME OF THE PENALTIES ARE:

Failing to carry lifejackets	\$100
Exceeding 5 knots – within 200 metres of shore, within 200 metres of a dive flag, within 50 metres of a swimmer or another vessel	\$200
Exceeding 12 knots in Lambton Harbour	\$200
Obstructing large shipping	\$200
Causing an obstruction in an access lane or reserved area	\$200
Failure to show correct navigation lights when necessary	\$100

REPORT UNSAFE BEHAVIOUR – 04 473 4547

For more information, please contact:

Greater Wellington Regional Council Harbours
0800 496 734
harbours@gw.govt.nz
www.gw.govt.nz

February 2014
GW/H-G-14/17

DON'T LEAVE SHORE WITHOUT ONE



Wellington Regional Navigation and Safety Bylaws require you to carry lifejackets of appropriate sizes for everyone on board your boat. (bylaw 2.1)

SLOW DOWN

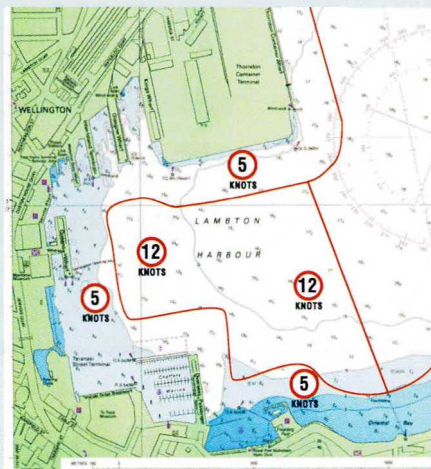
Speed of craft must not exceed 5 knots when within:

- 50 metres of another vessel, raft or person in the water
- 200 metres of shore or structure, on the inshore side of any row of buoys marking that distance from shore
- 200 metres of any vessel or raft flying Flag A (Diving Flag)



No vessel shall exceed a speed of 12 knots in the Lambton Harbour area (as shown on map).

(bylaws 3.2 and 6.8)



IT TAKES 3 TO SKI

Any vessel (including a jet ski) towing a person on a wakeboard, biscuit, skis or anything else must have an observer (over 10 years old) watching the person being towed. (bylaw 3.5)



Always travel in and out of a water-ski lane on your starboard (right) side.

