

Report 09.426
Date 5 August 2009
File ENV/17/02/01

Committee Regulatory
Author Geoff Ewington, Environment Protection Officer

Environmental Protection Report

1. Purpose

To report on incident response, investigation and audit work undertaken by Greater Wellington's Environmental Protection Team in the Wellington region during the reporting period.

2. Communication

A full list of incidents for the last period can be found at:
<http://www.gw.govt.nz/section32.cfm?>

No further public communication is necessary for this report.

3. Background

The Environment Management Division manages the unauthorised use of the environment via the following:

- 24-hour Incident Response service, addressing notifications of environmental incidents and alleged non-compliance with regional plans.
- Take Charge, a pollution prevention programme to improve environmental performance and compliance of small to medium-sized businesses.
- Special Projects, which include the development of resource materials, and targeted investigations to establish baseline conditions, track trends, and characterise environmental problems.

4. Incidents

4.1 Incident summary for the period 22 May 2009 to 30 June 2009

A total of 102 incidents were recorded during this reporting period, as summarised in Figure 1. The reporting period has a high frequency of sediment and liquid waste incidents with a considerable drop in odour incidents compared to other reporting periods.

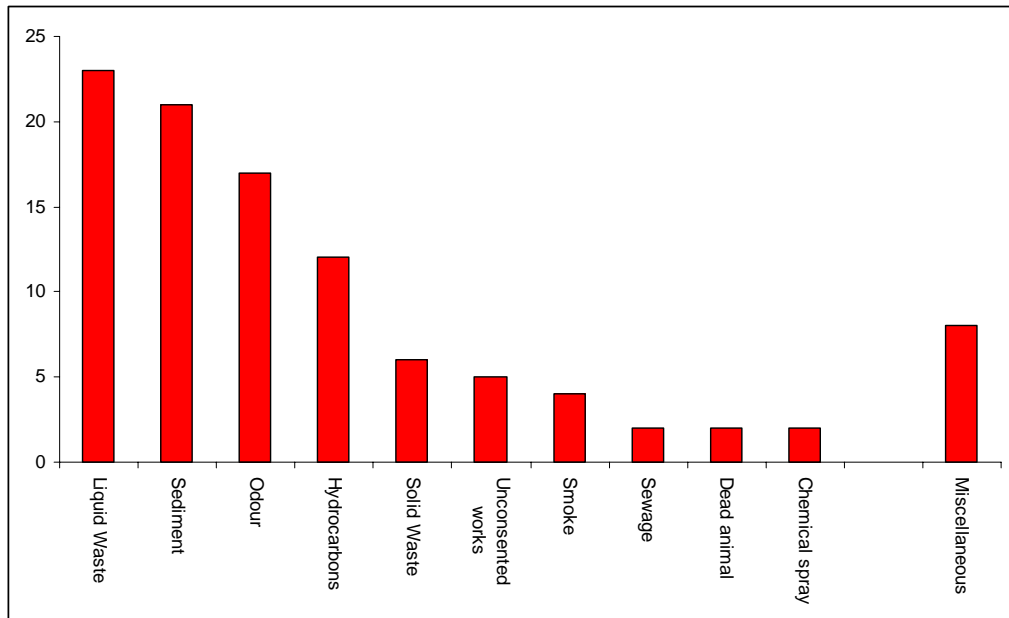


Figure 1: Summary of Incidents for period 22 May 2009 to 30 June 2009

4.2 Incident significance

The incidents are assessed for significance as determined by the severity, extent and duration of environmental effects. This ranking is used to track incident trends. The majority of incidents attended were considered to have negligible and minor effects.

The incidents categorised as “Not Assessed” are those where officers did not attend the scene, or where officers were unable to assess the severity, extent or duration of environmental effects.

In this period there was an increase in the number of moderate incidents.

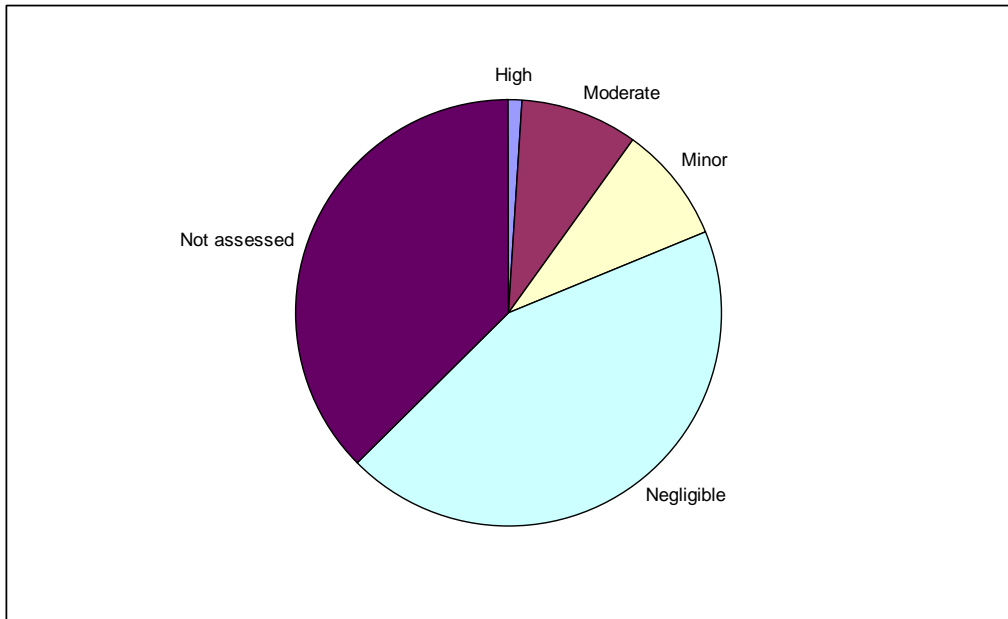


Figure 2: Incident significance for the period 3 April 2009 to 22 May 2009

4.3 Significant incidents

The following incidents were assessed as having a high environmental significance during this reporting period.

On 27 May GW issued infringements to Rylib Dairies Limited and its directors for unauthorised dairy effluent discharges to land due to excessive ponding. During the annual dairy effluent inspection it was found that ponding had occurred in several locations and in general effluent management on the farm was poor.

On 5 June an incident was attended at Moonshine Hill Rd. Tracking by a forestry group has disturbed an old landfill. An oily Leachate was found coming out of ground heading to a stream. The site was possibly used as a dump as far back as the 1970s by a local car manufacturer. Continued monitoring of the site is likely.

4.4 Incident distribution

Figure 3 shows the regional distribution of incidents. The majority of the incidents are reported in the urban areas. The data shows the number of incidents reported with multiple notifications has dropped off significantly in this reporting period. This would confirm a down turn in the frequency of odour notifications.

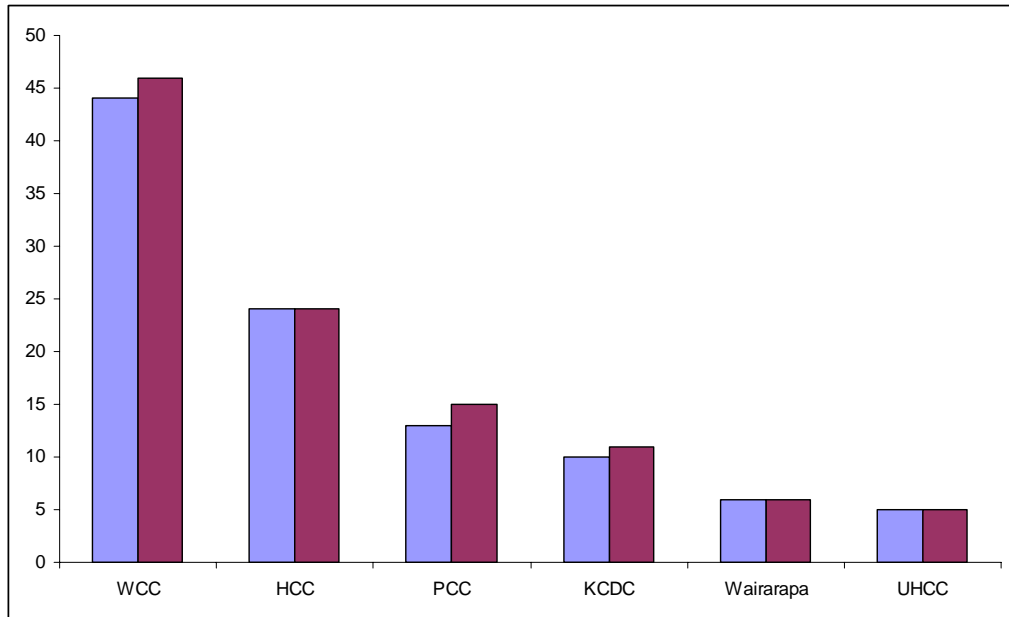


Figure 3: Incident distribution (light) and notifications (dark) by local authority for the period 22 May 2009 to 30 June 2009

5. Enforcement action

Table 1 summarises enforcement action taken from 22 May 2009 to 30 June 2009.

Table 1: Summary of enforcement action

Regulatory tool	Number issued
Advisory Notices	5
Cost Recovery (invoices)	7
Infringement Notices	3
Abatement Notices	5
Enforcement Orders	0
Prosecutions (& informations laid)	1

5.1 Summary of enforcement action

Advisory Notices

Offender	Location	Activity giving rise to Advisory Notice	Advisory Request
Graham Dick	Moonshine Forest Partnership, Moonshine Hill road, Upper Hutt	Leachate discharge from landfill to water	Contain Leachate discharge to prevent discharge

Offender	Location	Activity giving rise to Advisory Notice	Advisory Request
			entering stream
Paddy Hannan	Waiu Street, Waiuniomata	Discharge of sediment laden water to storm water whilst washing the road/truck wheels with water	Cease unauthorised discharge to storm water
John Pona	Chews Lane, Wellington	Washing concrete wash water with sediment to drain at bottom of chews lane	Cease unauthorised discharge to storm water and remove sediment from drain trap at bottom
Nigel Jenkins	31 Jefferson Street, Brooklyn	Discharge of sediment to storm water	Cease unauthorised discharges of sediment to storm water
Vaughan MacInnes	Broken Hill Road, Porirua	Discharge of hydrocarbons to storm water	Cease discharge of contaminants

Cost Recovery

Name of Recipient	Reason for the invoice	Incident location	Amount due
Lucas Surveys Limited	Unauthorised structure in the bed of a stream	400A Paremata Road	\$112.50
David Wilson	Discharge of hydrocarbons to stormwater	Steyne Avenue, Plimmerton	\$495.00
Wellington Water Management Limited	Sewage discharge to Albemarle Stream, Northland	Albemarle Stream, Northland	\$261.00
Envirowaste Technical Services Ltd	Cost recovery for confirmed non compliance with regional plan - Odour investigation	Gough Street, Seaview	\$168.75

Infringement Notices

Name/Company name	Reason for the Notice	Location of incident - street address	Infringement Fee (Incl GST) \$
John Nicholls	Breach of resource consent WAR010097 (excessive ponding of effluent)	Diversion Road, Featherston	300
Kelly Nicholls	Breach of resource consent WAR010097	Diversion Road, Featherston	300
Rylib Dairy Limited	Breach of resource consent WAR010097	Diversion Road, Featherston	300

Abatement Notices

Name/Company name	Location	Reason for Notice	Instruction
Porirua City Council	Spicers Landfill, Broken Hill Road, Porirua	Unauthorised discharges to air	Cease unauthorised discharges to air from Spicers Landfill
Fletcher Construction New Zealand and South Pacific Limited	Spicers Landfill, Broken Hill Road, Porirua	Unauthorised discharges to air	Cease unauthorised discharges to air from Spicers Landfill
Tonkin and Taylor Limited	Spicers Landfill, Broken Hill Road, Porirua	Unauthorised discharges to air	Cease unauthorised discharges to air from Spicers Landfill
David Howard	150 Horokiwi Road, Horokiwi, Wellington	Unauthorised discharges to air from a cleanfill operation	Cease the unauthorised discharges of air from a cleanfill operation
Robert Howard	150 Horokiwi Road, Horokiwi, Wellington	Unauthorised discharges to air from a cleanfill operation	Cease the unauthorised discharges of air from a cleanfill operation

6. Take Charge

Take Charge is Greater Wellington's Pollution Prevention Program to improve site environmental management. The current program targets:

1. Grenada North – Take Charge audits complete for all sites in Grenada North area assessment, but some follow-up visits to businesses to take place.
2. Non-complying businesses referred by environmental protection staff and the public.

3. eMission businesses - committed to achieving gold level Enviro-Mark accreditation.
4. Service stations in the Wairarapa - an activity based assessment to ensure consistent compliance.
5. Panel and Paint audits for all IAG contractors in the Wellington region.

6.1 Emission

The Emission programme has begun and 15 businesses are scheduled to undergo a Take Charge audit assessment by the end of August. One business was visited by the Take Charge Coordinator during this period.

6.2 Panel and Paint audits

Take Charge is auditing IAG suppliers in the Wellington region of the 40 sites (in total) 1 initial audit was undertaken during this period.

6.3 New industry and area assessment projects

The Granada North area assessment project has now been completed, with only a few minor outstanding requests at two sites. Naenae commercial/industrial area has been selected for the next area assessment to be undertaken. A report on these two items was presented at the Regulatory Committee. (Report 09.314). The Take Charge Coordinator, and Team Leader – Environmental Protection had a meeting with Hutt City Council staff during this period to explain the Naenae area assessment and discuss the level of involvement that Hutt City Council would like.

Background stream sampling was undertaken at three locations on the Waiwhetu Stream near the discharge point of the stormwater drain. We are currently awaiting the results of this testing.

6.4 Assessments and reports

Thirteen Take Charge visits were undertaken during this reporting period. This comprises of:

- **2 new visits**
- 3 follow up visits

New sites audited under Take Charge				
Company Name	Address	Current activities	Risk at site	Compliance status
Excel Digital	47-53 Hutt Road, Wellington	Digital printers	Low	Minor non compliance
Capital City Panel and Paint	166 Taranaki Street, Mt Cook	Panel and Paint	Low	Minor non compliance

Promax	52 Jamaica Drive, Grenada North	Fruit and vege distribution	Med-High	Minor non compliance
Macbilt Engineering	1 Cashew Street, Grenada North	Engineering firm	Med	Minor non compliance
Goodman Fielder Fresh	21 Cashew Street, Grenada North	Food services and fresh produce	Low	Minor non compliance

7. Recommendations

That the Committee:

1. ***Receives the report.***
2. ***Notes the content of the report.***

Report prepared by:



Geoff Ewington
Environmental Protection
Officer

Report approved by:

Al Cross
Manager, Environmental
Regulation

Report approved by:

Nigel Corry
Divisional Manager,
Environment Management
Division