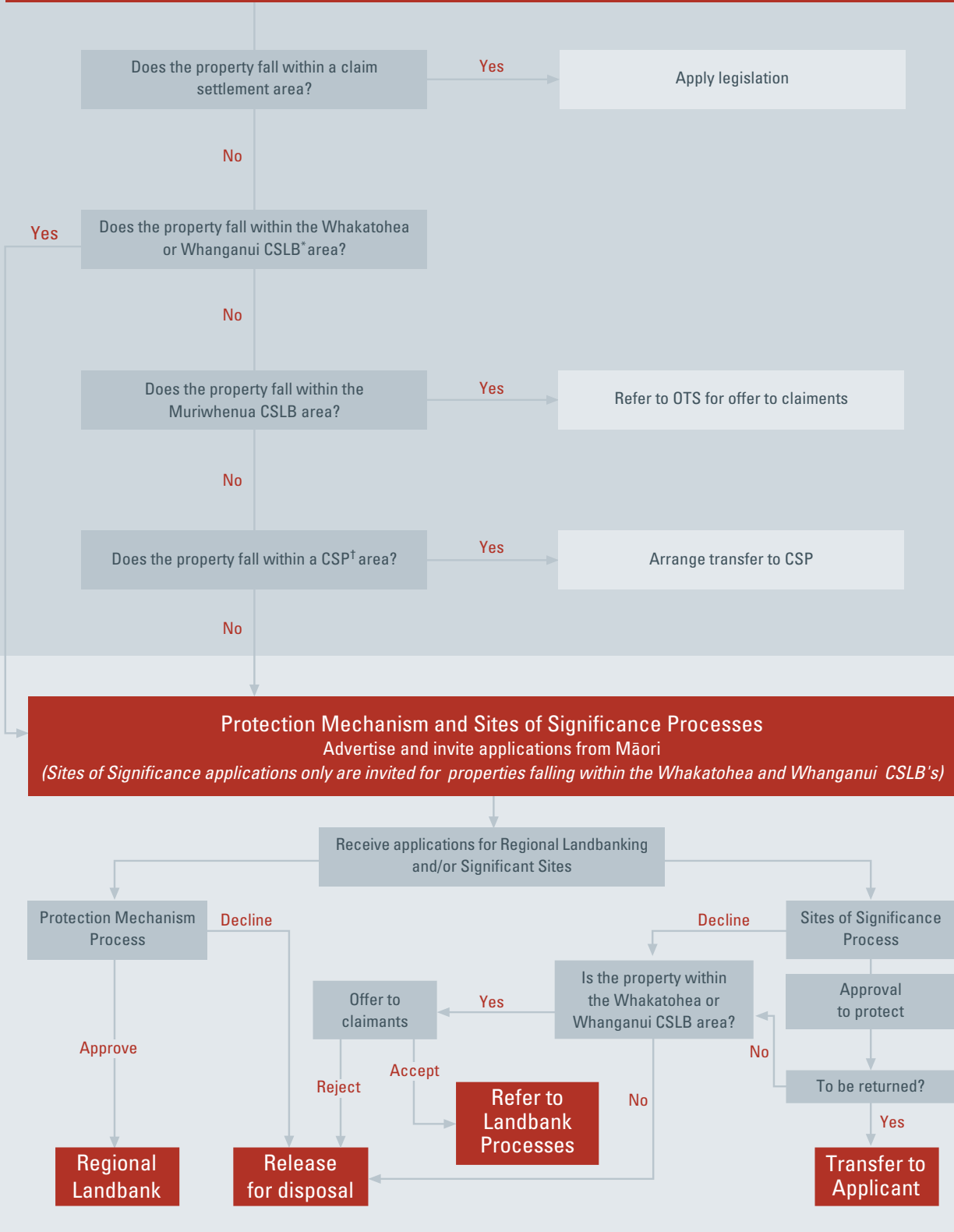




The Protection Mechanism

and other mechanisms for the protection of Māori interests in surplus Crown-owned land

Property must be in a "Ready for Sale" state to be advertised in the Protection Mechanism and Sites of Significance process (i.e. cleared of all statutory and contractual obligations). Refer to Appendix 3 for details on pre-requisites.



* CSLB = Claim Specific Landbank
 † CSP = Crown Settlement Portfolio