

Contents

1.	Summary	5
2.	Monitoring and control history	5
3.	Monitoring methods	5
4.	Details of management area	5
5.	Monitoring results	6
6.	Discussion	7
7.	Supply of monitoring data – Terms and Conditions	7

1. Summary

Wax tag monitoring of Botanic Gardens Wellington was conducted in March 2007. No possums were detected. It appears that rodents and possums are being successfully controlled by the current baiting regime.

2. Monitoring and control history

This was the first time possums have been monitored in the Botanic Gardens using any method. Control using Brodifacoum in bait stations is ongoing.

3. Monitoring methods

Wax tag monitoring is not an absolute abundance measure but an indication of population size derived from activity levels (bite mark counts). Monitoring of Botanic Gardens was carried out in accordance with the most recent "Protocol for Low Level Possum Abundance Monitoring using the Wax Tag Method". Three lines of 20 tags per line were monitored for three nights. Lines were monitored between 19 and 22 March 2007. The approximate line locations are shown on the attached map.

4. Details of management area

Location	Botanic Gardens	
Control Phase	Post	
Management Area (hectares)	32	Operational Notes <i>see below</i>
Possum Habitat (hectares)	23	
Strata	none	
Control Methods	Brodifacoum baiting	
Date of Control	Start: 2003	Finish: Ongoing

Operational Notes (control)

On going baiting is conducted by Wellington City Council since 2003. Brodifacoum bait is used in 23 bait stations situated randomly throughout the area.

5. Monitoring results

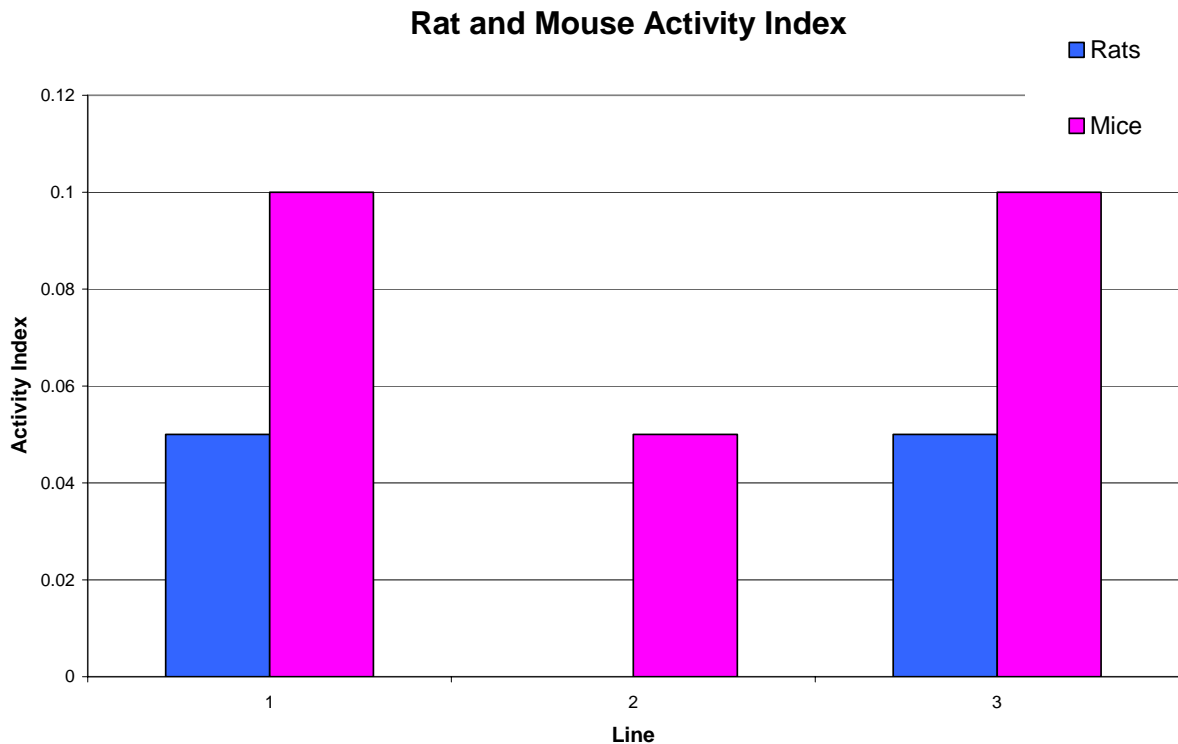
Table 1 provides details of individual line results. Three 200m lines were placed randomly and monitored for three fine nights.

Table 1 – Monitoring Line Summary

Line No.	Possum Activity Index PAI (%)	Rat Activity Index (%)	Mouse Activity Index (%)	Occupier	Predominant habitat type
1	nil	0.05 (1 rat)	0.1 (2 mice)	WCC	Cultivated Garden
2	nil	0	0.05 (1 rat)	WCC	Native
3	nil	0.05 (1 rat)	0.1 (2 mice)	WCC	Native and Exotic trees, scrub and lawn.

Weighted Average Activity Indices	Possums Nil	Rats 3.3% +/- 3.3% (95% CI)	Mice 8.3% +/- 3.3% (95% CI)
--	--------------------	------------------------------------	------------------------------------

Chart One – Monitoring Line Summary



6. Discussion

The current Brodifacoum baiting regime seems to be successfully controlling possums and rats in the Botanic Gardens. No possums were detected at the Botanic Gardens compared to 13.9% possum activity index recorded in a Wax Tag monitor of the Western Hills in Lower Hutt in 2005. There was no pest control in the Western Hills, Lower Hutt. The rat activity index for Botanic Gardens is 3.3% compared to 9.85% in the Western Hills monitor.

7. Supply of monitoring data – Terms and Conditions

The enclosed information is supplied, within the framework of our data quality system, from the best practice currently available. Greater Wellington has exercised all reasonable skill and care in controlling the contents of the information.

As we endeavour to continuously improve our service, we may amend the data on which this information is based, where necessary and without notice, at any time.

Under no circumstances will Greater Wellington or its employees or agents be liable in contract or otherwise to compensate you for any loss, injury or damage (including loss of profits or consequential loss) arising directly or indirectly from the supply by the Greater Wellington or its agents of inadequate, inaccurate or incorrect monitoring information.

Any use of the material supplied, for example, by inclusion in a report or media release, should be accompanied by an acknowledgement of the source of the data.

Your acceptance of the enclosed material and/or services signifies your acceptance of these terms and conditions.

Report prepared by:



Sara Moylan
Biosecurity Officer (Investigations)

Report checked and approved for release:



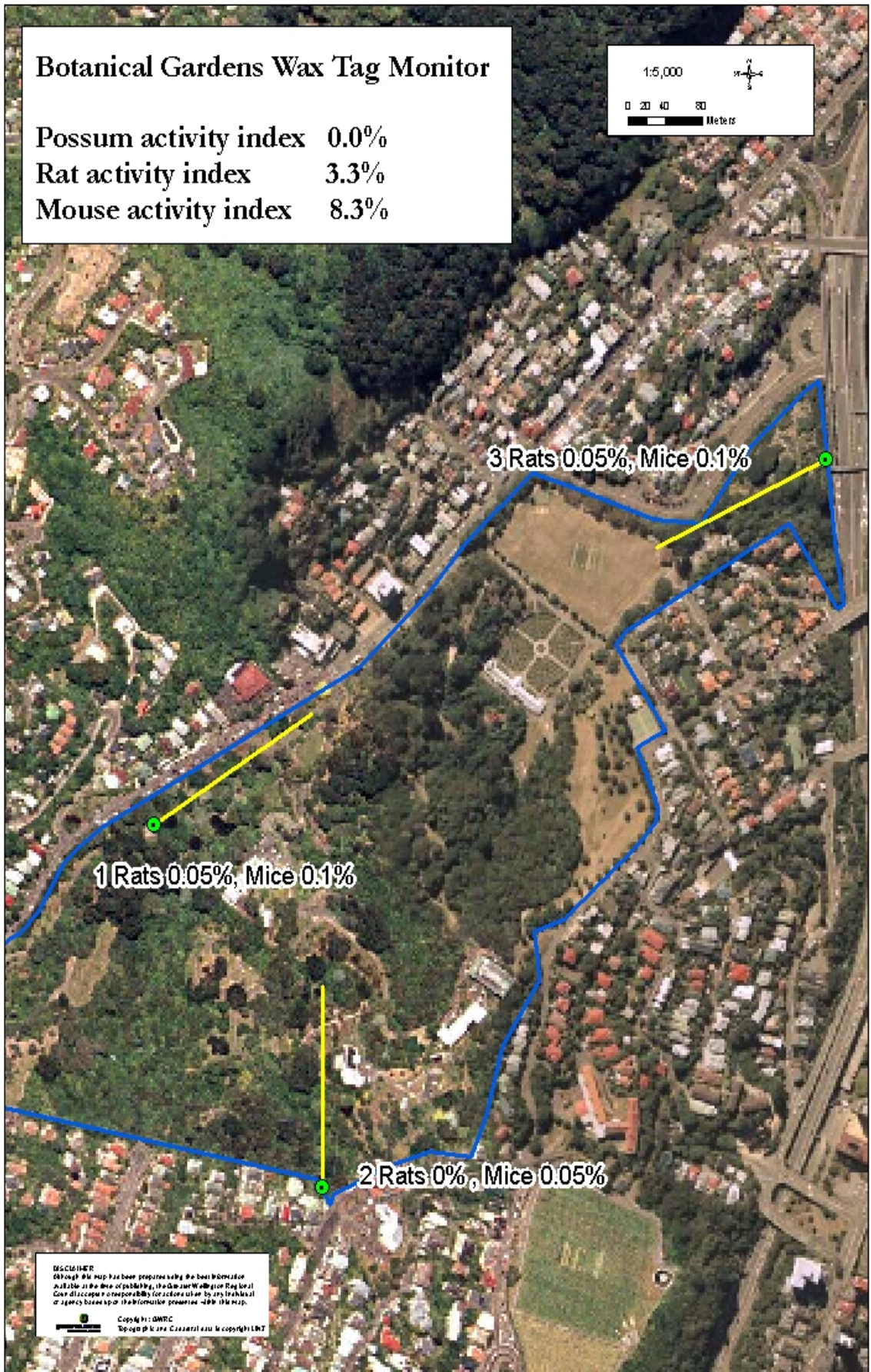
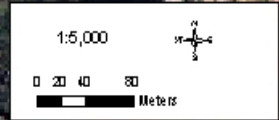
Murray Hudson
Senior Biosecurity Officer (Investigations)

Date: 19 June 2007

Date: 19 June 2007

Botanical Gardens Wax Tag Monitor

Possum activity index 0.0%
Rat activity index 3.3%
Mouse activity index 8.3%



DISCLAIMER
Although this map has been prepared using the best information available at the time of publishing, the Gloucester-Walton Regional Council accepts no responsibility for actions taken by any individual or agency based upon the information presented on this map.
Copyright © 2017
Topographic data: Cassini 2011 copyright LINZ