

## Wellington Regional Strategy Open Space workstream

### 1. Background

The Wellington Regional Strategy identifies that there is considerable recognition of the importance that open space plays in sustainable economic growth.

The Open Space project is part of the work being done to ensure there is an investment in good regional form.

The Open Spaces Working Group is a sub-group of SORT (senior council officers' resource team) and is comprised of members representing the Region's territorial authorities, Greater Wellington Regional Council (GWRC), Department of Conservation, Queen Elizabeth II Trust, and iwi representation. The working group is being jointly led by Victoria McGregor (Wellington Regional Strategy Office) and GWRC. The project is being championed by David Benham, Chief Executive Officer of GWRC.

### 2. Main outcome of this work stream

- To develop a regional open space strategy and action plan

The main aim of the strategy is to help guide collaborative planning for the public open space network in the Wellington Region.

In the context of this strategy, open space is defined as:

*Any area of publicly-managed land or water with recreational, ecological, landscape, cultural and/or historic values.*

This assumes that legal access can be gained to such areas and that any charges or fees are paid.

A vision for open space to 2025 has been developed by the key open space providers (see map attached) across the Wellington Region. This vision will guide the future provision and management of open space.

A number of challenges for open space providers have been identified as part of this work. A regional open space matrix has been developed to provide for a consistent framework for the organisation of open space across the Wellington Region. A regional matrix helps to identify future requirements for open space provision and the identification of gaps and opportunities across agencies. This assessment will be made as part of the action plan, which identifies actions that open space providers in the Wellington Region intend to take over the period 2009-2012 to address the challenges.

### **3. Main outcomes of strategy**

- (1) There is a co-ordinated approach for the development, management and protection of open space across the Wellington Region.
- (2) There is collaboration across provider and partner organisations so that resources and solutions are shared and exchanged.
- (3) Opportunities and mechanisms to enhance the regional network are identified across the provider organisations.
- (4) There are improved outcomes and greater efficiencies across the Region's open space providers.
- (5) There is consistent spatial data collection and management across the Region.
- (6) Members of the public are well informed about the Wellington regional open space network
- (7) The needs of the Wellington community are well met.

### **4. Implementation**

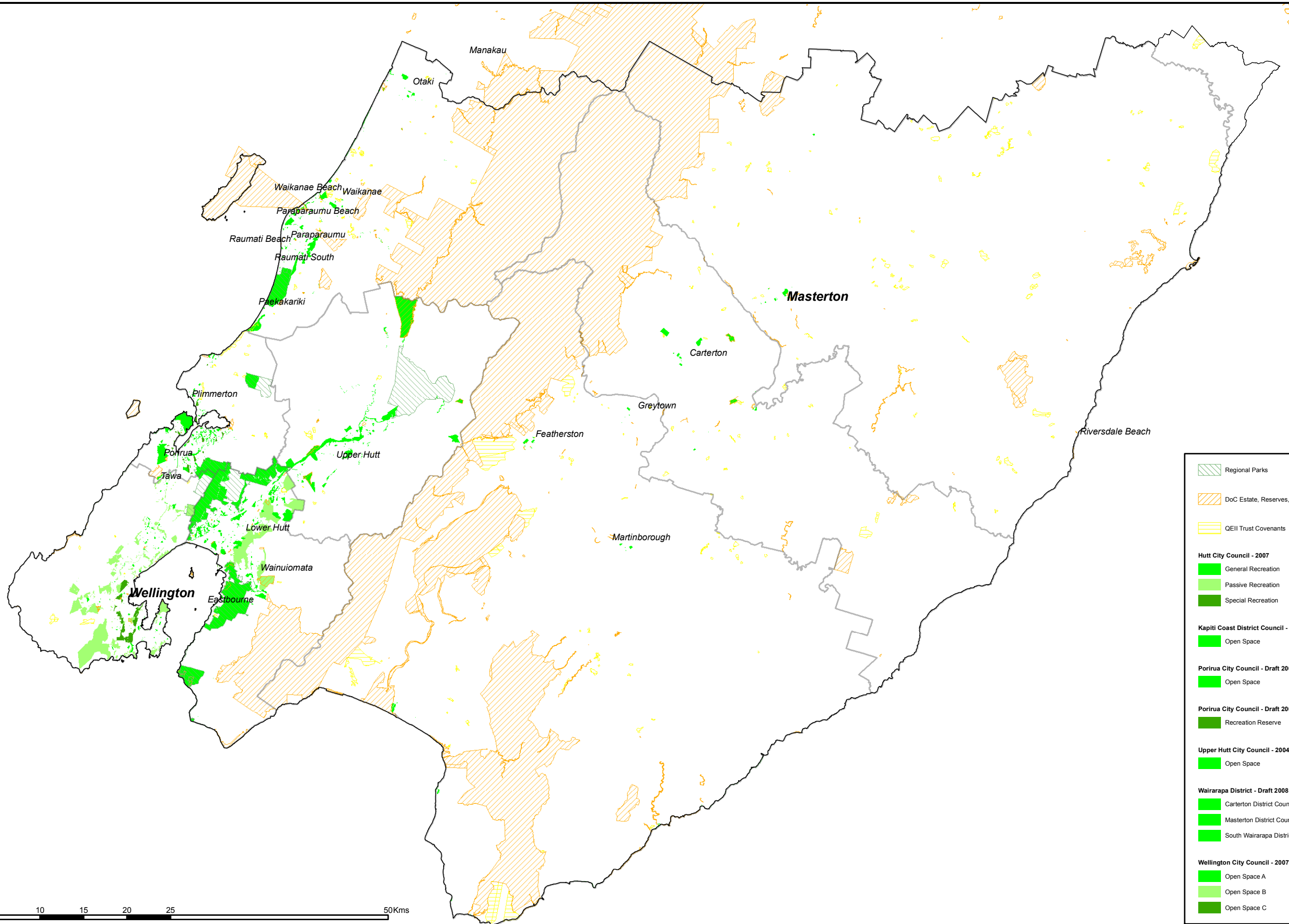
The strategy will be implemented through voluntary participation of open space provider organisations across the Region. It is anticipated that the action plan will be reviewed every three years following the commencement date of the strategy.

The Wellington Regional Strategy Committee will oversee the implementation of the action plan, which will be co-ordinated through the Regional Open Space Working Group.

### **5. Timeframe**

It is anticipated that the strategy and action plan (2009-2012) will be presented for approval at the Wellington Regional Strategy Committee meeting on 14 October 2009.

# Open Space Zoning and Publicly Owned Land - Wellington Region



	Regional Parks
	DoC Estate, Reserves, Covenants
	QEII Trust Covenants
<b>Hutt City Council - 2007</b>	
	General Recreation
	Passive Recreation
	Special Recreation
<b>Kapiti Coast District Council - 2007</b>	
	Open Space
<b>Porirua City Council - Draft 2008</b>	
	Open Space
<b>Porirua City Council - Draft 2008</b>	
	Recreation Reserve
<b>Upper Hutt City Council - 2004</b>	
	Open Space
<b>Wairarapa District - Draft 2008</b>	
	Carterton District Council
	Masterton District Council
	South Wairarapa District Council
<b>Wellington City Council - 2007</b>	
	Open Space A
	Open Space B
	Open Space C

