

Park-specific management and policies
Kaitoke Regional Park



6.5 Kaitoke Regional Park

6.5.1 Legal status

Title held:	Wellington Regional Council
Legislative status:	Administered under Local Government Act 2002, Wellington Regional Water Board Act 1972 (for water supply and recreation)
Territorial Authority:	Upper Hutt City Council

The land is held fee simple for the purposes of recreation, forestry and water supply, vested pursuant to the Wellington Regional Water Board Act 1972, and subject also to the Wellington Regional Council (Water Board Functions) Act 2005.

Refer to Appendix 2 for legal descriptions of land parcels.

6.5.2 Background

Kaitoke Regional Park lies in the southern foothills of the Tararua Ranges, approximately 10 kilometres north of Upper Hutt City on the way to the Wairarapa. The park is about 2,860 hectares and entirely owned by Greater Wellington. The steep forested hill country of the Hutt Water Collection Area provides a backdrop to the park, while the park's river terraces and gentle hills provide opportunities for recreation.

The hills and terraces are covered in native forests that include podocarp and beech forest. A matai-totara bush remnant is adjacent to the Te Marua park entrance. Native birds are common within the park, including kereru, fantails, grey warblers, tui, bellbirds and rifleman, as well as fish such as bullies, koaro and freshwater crayfish.

Māori sites of significance are limited, as there were few early permanent Māori settlements in the area. However, Māori often moved through the area when travelling to the Wairarapa and the west coast. It was also an area of mahinga kai and used for hunting birds and fishing, as well as gathering forest foods and materials. Ngāti Toa Rangātira and the various Wellington based Taranaki iwi retain mana whenua over the lands.

Since the waterworks scheme and facilities were completed in 1957, the Kaitoke area has been popular for picnicking and swimming. The area was included in the Wellington Regional Water Board Act 1972. In 1976 the Wellington Regional Planning Authority identified the area as a potential regional park because of the unspoiled forests, as well as the recreational and educational opportunities. The park's development began in 1983, providing a place for informal recreation in areas of open space.

The park's indigenous forest is readily accessible for all ages and fitness levels. The Hutt and Pakuratahi Rivers provide great places to swim and walk. The Hutt is one of the best trout rivers in the Region and the Hutt River gorge is popular for white water recreation. Tramping, cycling, camping, dog walking and horse riding are also popular activities. Picnic tables, barbecues and camping facilities are provided.

In addition, the water treatment plant, the Kaitoke weir and the Stuart Macaskill Lakes - key parts of the water supply system for the Upper Hutt, Lower Hutt, Porirua and Wellington metropolitan areas - are viewable from lookouts within the park.

It should be noted that the Hutt Water Collection Area is excluded from this management plan. The *Greater Wellington Water Collection Areas Asset Management Plan* guides management of the Hutt Water Collection Area. The Te Marua Water Treatment Plant and Stuart Macaskill Lakes, as well as other water supply infrastructure - including a pumping station, flume bridge and pipelines - are within the park boundary but are also excluded from the provisions of this plan. The operation and maintenance of these facilities takes precedence.

For more information refer to the resource statement documents.

Key park characteristics

Land

- Beech/broadleaf forest, including some southern rata and native mistletoe
- Important fragment of matai-totara bush (Te Marua Bush)
- Ecological corridor between Rimutaka and Tararua Ranges
- Pristine waterways that host native ecosystems, as well as contributing to the Wellington region's water supply
- Old river terraces and geological features from past tectonic movement along the Hutt River and gorge.

People

- Water supply infrastructure
- Camping/picnicking adjacent to a native forest, linking to a range of easily accessible walking opportunities
- Easy walking access to native forest
- Water based recreational opportunities.

6.5.3 Management focus

The focus for Kaitoke Regional Park is to:

1. Ensure fresh, clean water for the region, continuing to restrict access to sections of the park for water supply purposes
2. Protect the native forest for biodiversity purposes, as well as a backdrop for recreational activities
3. Provide passive recreation and camping in the flat areas that are open to the public
4. Undertake no significant new development other than for water supply purposes.

6.5.4 Specific policies

Biodiversity and ecosystems

- a. To restore Te Marua bush in accordance with the species list provided by the Wellington Botanical Society.
- b. To have particular regard for the high priority indigenous areas listed in Table 6 when determining ecosystem protection and enhancement priorities.

Landscape and geological features

- c. To protect the park's key landscape features and values list below from inappropriate use and development, including: Hutt River Gorge, Kaitoke Hill, Southern Ridge and Wellington Fault line, River Terraces, and Putaputa catchment.
- d. To protect geological features such as the Pleistocene gravel exposures and fault terraces at Te Marua, landscape features and indigenous forest along the southern ridge and the Hutt Gorge.

- e. To advocate for the protection of the park's key geological features and values listed below from inappropriate use and development:
- Pleistocene gravel exposures to the south of Te Marua
 - Pakuratahi bluff and loess deposits
 - Fault preservation site behind the Te Marua Plant (an example of an offset Ohakea terrace and riser)
 - Vertical strata visible from the Kaitoke weir.

Cultural heritage

- f. To develop and implement conservation plans for significant heritage features, including, but not limited to:
- Benge Homestead site
 - Logging tramways
 - Original travel routes to the Tararua Ranges.

Land management

- g. To ensure that any development recognises the regional importance of the water supply functions of the Te Marua Pumping Station and Stuart Macaskill Lakes.
- h. To demonstrate the importance of water supply as an essential utility in the region, and provide for ongoing operation and maintenance.
- i. To restrict public access to water supply infrastructure, as necessary, for its safe and efficient operation.
- j. To allow for the upgrade or development of additional water utilities, eg, pipelines, treatment facilities, water storage or associated infrastructure.

Visitor services

- k. To manage Te Marua and Pakuratahi Forks as the main entrances.
- l. To manage Kaitoke Hill as a secondary park entrance area.

- m. To provide for memorial tree planting and Celebrate Life plantings at the Totara Grove (Te Marua).
- n. To maintain discretion over whether alcohol is permitted during peak periods of campground use to ensure the safety of campers and park staff.
- o. To permit camping and overnight stays, including campervans, at designated sites only (indicated through park signage and information). Stays are for a maximum of one week. Campervan dumpsites are not provided.
- p. To manage the camping areas at a basic level.
- q. To restrict public access to the weir and pump house, the Stuart Macaskill Lakes and the Te Marua Water Treatment Plant, as operational areas.
- r. To allow wilderness camping in the park interior.

Partnership in parks

- s. To recognise Ngāti Toa Rangatira and the Port Nicholson Block Settlement Trust's relationship to the forest through:
- Participation in assessment of significant features of the forest
 - Identification of traditional trails through the forest.
- t. To liaise with, in regard to decision making, Upper Hutt City Council and the Department of Conservation on the management and use of the land to provide an integrated approach to environmental management programmes and recreational activities.
- u. To ensure that any new partnerships contribute to advocacy, restoration or education outcomes for Kaitoke Regional Park.

Table 6 - Significant indigenous environmental areas and features - Kaitoke Regional Park

AREA	DESCRIPTION	REASONS FOR SIGNIFICANCE
Te Marua Bush	Small remnant found below Stuart Macaskill Lakes	Matai-totara bush that was once widespread in the area and is now one of the few examples in the region of this ecotype. A native flowering mistletoe is also found here.
Hutt River	Generally Downstream of the Kaitoke Weir Te Marua, including lower terraces	Good diversity of indigenous fish species relatively unaffected by development. Recognised as having important trout habitat in the <i>Regional Freshwater Plan</i> . Identified as part of the Upper Hutt groundwater zone in the <i>Regional Freshwater Plan</i>
Pakuratahi River	Generally South-eastern area of park	Good diversity of indigenous fish species relatively unaffected by development, endemic dwarf galaxiids and long finned eel. Identified as part of the Pakuratahi groundwater zone in the <i>Regional Freshwater Plan</i> .
Southern Ridge	Ridge track: Native flowering mistletoe (<i>Peraxilla tetrapetala</i>)	Threatened plant species: chronically threatened – gradual decline.
Park interior	Lowland/flat land black beech forests Steep land rimu-rata/hinau/kamahi forests Hard beech forest; red beech-rimu/kamahi forest; black beech. Also rewarewa, Halls totara, miro, maire, kahikitea, pukatea, northern rata associations.	Large variety of plant species and community types, identified in New Zealand Forest Service Surveys and the Biological Resources of the Wellington Region as significant. Also identified in several “Key Native Ecosystem” surveys in the 1990s and Department of Conservation in 2004. Easily accessible examples of forest successional processes, including regeneration, as well as altitudinal sequences. Threatened plant species: Umbrella fern (<i>Sticherus cunninghamii</i> – regionally rare), strap fern (<i>Grammitis pseudociliata</i> - regionally data deficient), gully tree fern (<i>Cyathea cunninghamii</i> – regionally sparse. <i>Thelymitra aff. Ixioides</i> (regionally critical) Threatened bird species: New Zealand falcon (nationally vulnerable) and kereru (gradual decline)
Pakuratahi Forks	Umbrella fern (<i>Gleichenia microphylla</i>)	Regionally rare species.

6.5.5 Projected changes

Refer to Map 13 (following pages).

- Evaluate the options for better use of the lower and upper terraces to provide for the increasing number of day and overnight visitors.
- Work with the New Zealand Transport Agency for an off road cycle path between the park and Te Marua to link with the Hutt River Trail.
- Undertake ecological restoration in association with community groups at Te Marua Bush and Te Marua Remnants.
- Review demand and opportunities for walks in the Te Marua area and encourage use of access link to Pakuratahi Forest.
- Form a low level link to Pakuratahi Forks, to create a loop route with the Ridge Track.
- Improve forest health through pest control programmes.

6.5.6 Park maps

The following pages contain:

- Map 12: Kaitoke Regional Park in 2010
- Map 13: Kaitoke Regional Park projected future changes.

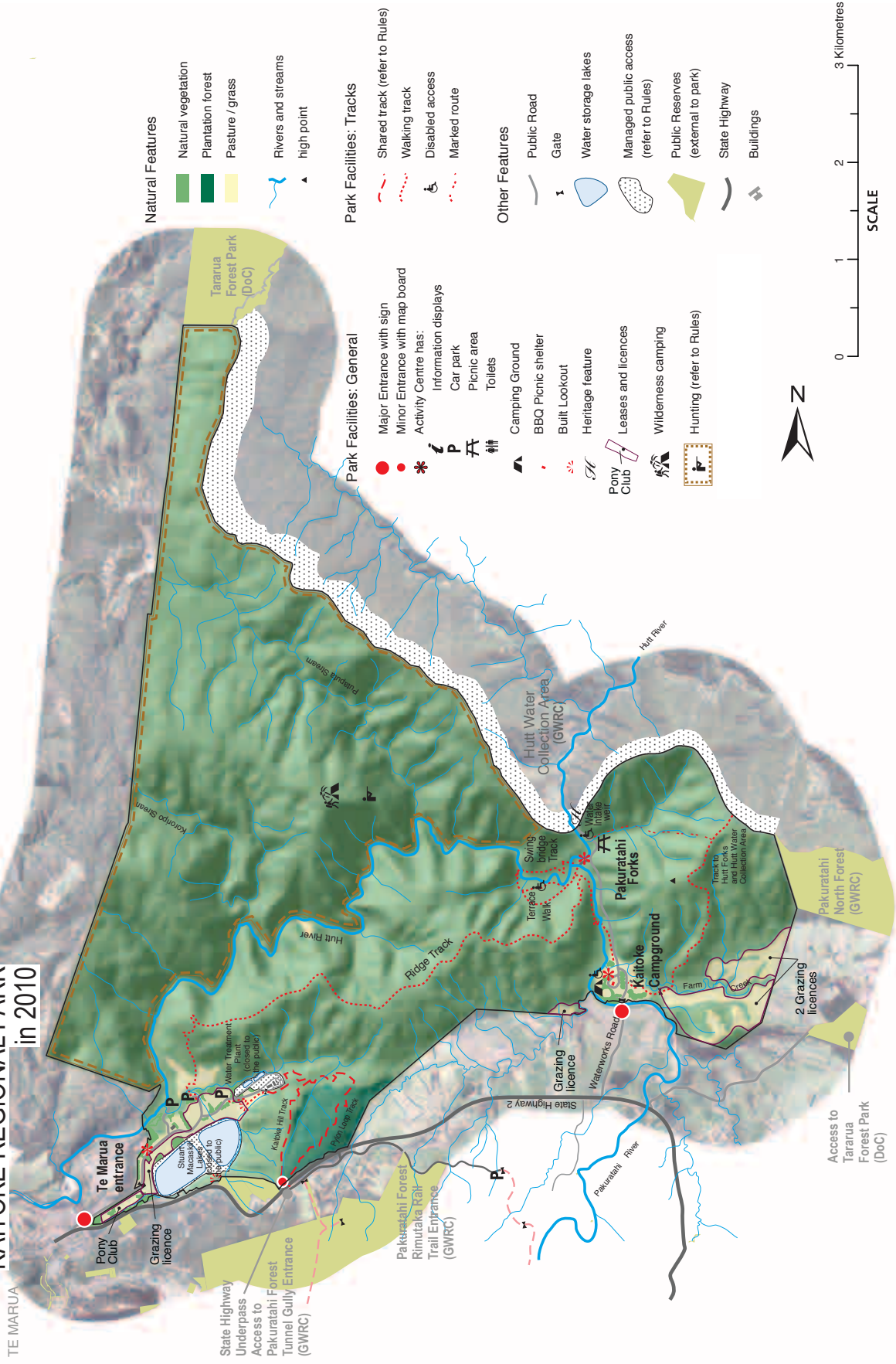
For more information

Kaitoke Regional Park Resource Statement
(Greater Wellington, 2005)

Top terrace development plan: Pakuratahi Entrance
(Armstrong, 2000)

Te Marua: Kaitoke Regional Park Development Plans (Anstey, 2002)

KAITOKE REGIONAL PARK in 2010



Natural Features

- Natural vegetation
- Plantation forest
- Pasture / grass
- Rivers and streams
- high point

Park Facilities: Tracks

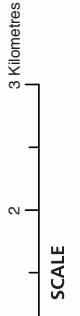
- Shared track (refer to Rules)
- Walking track
- Disabled access
- Marked route

Park Facilities: General

- Major Entrance with sign
- Minor Entrance with map board
- Activity Centre has:
 - Information displays
 - Car park
 - Picnic area
 - Toilets
- Camping Ground
- BBQ Picnic shelter
- Built Lookout
- Heritage feature
- Leases and licences
- Wilderness camping
- Hunting (refer to Rules)

Other Features

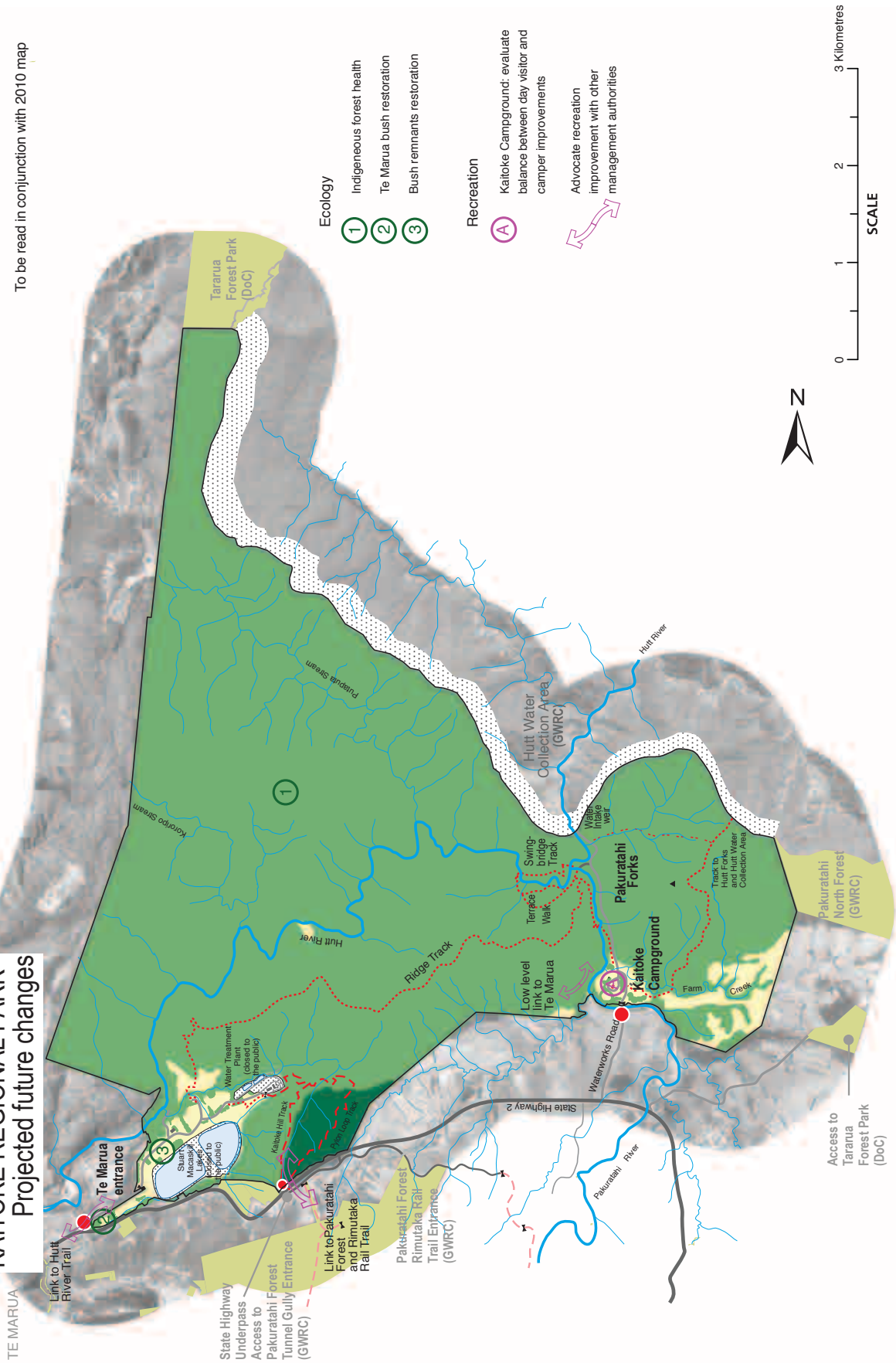
- Public Road
- Gate
- Water storage lakes
- Managed public access (refer to Rules)
- Public Reserves (external to park)
- State Highway
- Buildings



TE MARUA

KAITOKE REGIONAL PARK - Projected future changes

To be read in conjunction with 2010 map



Ecology

- 1 Indigeneous forest health
- 2 Te Marua bush restoration
- 3 Bush remnants restoration

Recreation

- A Kaitoke Campground: evaluate balance between day visitor and camper improvements
- Advocate recreation improvement with other management authorities

