

Park-specific management and policies  
**East Harbour Regional Park**



## 6.4 East Harbour Regional Park

### 6.4.1 Legal status

REGIONAL PARK/FOREST	TITLE HELD BY	LEGISLATIVE STATUS
East Harbour Regional Park – Northern Forest	Wellington Regional Council Hutt City Council (Hutt City Council transferred its administering body powers and responsibility for management to Wellington Regional Council) Crown – Department of Conservation (Land vested in Wellington Regional Council)	Administered under Local Government Act 2002. The majority is held under the Reserves Act 1977 as Scenic reserve.
East Harbour Regional Park – Pencarrow Lighthouse <sup>17</sup> Parangarahu Lakes and Baring Head	Wellington Regional Council Crown - Department of Conservation (land vested in Wellington Regional Council) Port Nicholson Block Settlement Trust	Administered under Local Government Act 2002. The majority is also held under the Reserves Act 1977 as recreation reserve. The area also includes: <ul style="list-style-type: none"> <li>• Esplanade reserves</li> <li>• Scientific reserve</li> </ul>

Territorial Authority: Hutt City Council

The majority of the park is held as scenic and recreation reserve under the Reserves Act 1977. Hutt City Council transferred its administering body powers and responsibility for management to Greater Wellington Regional Council (under Section 17 of the Local Government Act 2002). Crown land has been vested in Greater Wellington through the Reserves Act 1977.

The Parangarahu Lakes' area is predominantly recreation reserve, with smaller parcels of land held by other bodies: the Historic Places Trust (the Pencarrow Lighthouse footprint) and Taranaki Whānui ki Te Upoko o Te Ika (the area around the lakes and dendroglyph site). Baring Head is classified recreation reserve and vested in Greater Wellington.

Refer to the Appendix 2 for legal description of land parcels.

<sup>18</sup> The historic Pencarrow Lighthouse is located adjacent to the park and accessed through land managed by Greater Wellington Regional Council.

### 6.4.2 Background

East Harbour Regional Park is located on the eastern side of Wellington Harbour. The park covers just over 2,000 hectares and is made up of three separate blocks: the northern forest, the Parangarahu lakes and Baring Head. It is one of two Greater Wellington parks that adjoin the coastline.

The northern forest covers the steep hill country between Eastbourne, eastern bays and Wainuiomata. These hills, covered in beech/rata forest, provide a forest backdrop to the harbour. The valley floors contain lush lowland podocarp/broadleaf forest. The area is easily accessible from Eastbourne and Wainuiomata, and provides excellent opportunities for walking, tramping, dog walking and picnicking. This area has deer and pig hunting managed through a permit system. The upper Gollans Valley is a designated "remote zone", providing a wilderness experience close to the city. The park is also used for multisport events.

A number of local community groups have interests in the park, including the Eastbourne Forest Rangers, East Harbour Environmental Association and Mainland Island Restoration Operation (MIRO). MIRO is actively involved in maintaining the park, undertaking predator control and other management activities to protect the high biodiversity values in the area. It is home to most of the region's native forest bird species and, more recently, the North Island robin. To improve the biodiversity values of the area, the majority of the Gollans Valley is managed as a "mainland island" through ongoing predator control and monitoring.

The Parangarahu Lakes area is adjacent to the main harbour entrance and contains the nationally significant freshwater Lakes Kohangapiripiri and Kohangatera. These lakes and their associated wetlands are home to a high number of native plants and wildlife. This area also has important cultural and historic sites, including Pencarrow Lighthouse (owned by the Historic Places Trust). The area is accessible to the public by foot or bike along the gravel Pencarrow Coast Road, which is managed by Hutt City Council.

Baring Head, at the southern terminus of the East Harbour hills, consists of a reserve around the Baring Head Lighthouse and the adjoining land. The site, with its lighthouse above the cliffs, provides a visual backdrop for Wellington Harbour. The rocks below the lighthouse are popular for rock climbing.

The park includes several sites of significance, including pa and cultural harvesting locations, areas that were once occupied by Māori, who retain mana whenua over the lands.

Taranaki Whānui ki Te Upoko o Te Ika, a collective of people from Te Ati Awa, Taranaki, Ngāti Ruanui, Ngāti Tama and Ngāti Mutunga whose ancestors migrated to Wellington in the 1820s and 1830s and signed the Port Nicholson Block Deed of Purchase in 1839. The Port Nicholson Block runs from the Rimutaka Summit to the south coast at

Pipinui Point (Boomrock) around the coastline to Turakirae in the east and up the Rimutaka ridgeline to the summit.

Treaty of Waitangi redress recognises the traditional, historical, cultural and spiritual association of Taranaki Whānui ki Te Upoko o Te Ika with places and sites managed by the Crown within their area of interest. The deed of recognition<sup>19</sup> signed in December 2008 allows Taranaki Whānui ki Te Upoko o Te Ika and the Crown to protect and enhance the conservation values associated with these sites, and includes:

1. The lakebeds of Lake Kohangatera and Lake Kohangapiripiri (the Parangarahu Lakes, commonly referred to as the Pencarrow Lakes) and two esplanade reserves (the space occupied by water in the lakes and the space occupied by the air above the water remains in Crown ownership)
2. Dendroglyph sites near the Parangarahu Lakes (which will be vested as Māori Reservations).

Taranaki Whānui ki Te Upoko o Te Ika, is represented by the Port Nicholson Block Settlement Trust Board.

The East Harbour hills above Eastbourne have been popular with walkers since the late 1800s. The popular Butterfly Creek picnic area was developed in the early 1900s as a stop-off for people walking through to the Rimutaka Ranges. While parts of the park have been long protected, the park was first proposed as Pencarrow Regional Park in 1975. This proposal was much larger than the current park and the concept was subsequently reworked to only include publicly held land. In 1991 Greater Wellington purchased the Parangarahu Lakes area (formerly the Pencarrow Lakes block) in recognition of the importance of the lakes and wetlands. The first management plan was developed in 1995 and included land from the Department of

---

<sup>19</sup> Deed of Recognition – refer to Glossary for definition

Conservation, Hutt City Council and Greater Wellington. The park is now managed by Greater Wellington as East Harbour Regional Park.

For more information refer to the resource statement documents.

### 6.4.3 Key park characteristics

#### *Land*

- Significant landscape comprising native forest and coastal escarpment, which is highly visible from urban areas
- A mainland island sanctuary in the forest behind Eastbourne
- Geological features and associated habitats
- Nationally significant Kohangapiripiri and Kohangatera Lakes with raised beaches and marine terraces
- High biodiversity values in the upper Gollans Valley
- Regionally significant lowland forest of mixed podocarp and broadleaf containing threatened species.

#### *People*

- Long history of Māori occupation, particularly in the Parangarahu Lakes area
- Prominent historic Pencarrow Lighthouse and associated history
- Historic Butterfly Creek walkway and picnic area
- Bush and coastal tracks suitable for walking and tramping
- Rock climbing opportunities at Baring Head
- Significant sites for community restoration projects.

### 6.4.4 Management focus

The focus for East Harbour Regional Park is to:

1. Protect conservation and heritage values
2. Provide compatible passive recreation in the northern forest and coastal areas

3. Work with iwi (Port Nicholson Block Settlement Trust) and the Department of Conservation to development appropriate management of the Parangarahu Lakes
4. Work with MIRO and other voluntary groups to protect and develop the mainland island and to assist in the re-introduction of species to the area
5. No significant new developments.

### 6.4.5 Specific policies

#### *Biodiversity and ecosystems*

- a. To have particular regard for the high priority indigenous areas when determining ecosystem protection and enhancement priorities as listed in Table 5.
- b. To restore the Parangarahu Lakes' area with plants sourced in the Tararua Ecological District.
- c. To advocate and influence the management of land in Gollans Valley, including adjoining land as opportunities arise.

#### *Landscape and geological features*

- d. To protect the park's key landscape features and values from inappropriate use and development, specifically:
  - The forested hills overlooking Eastbourne and Wainuiomata;
  - Upper Gollans Valley
  - Coastal hills and escarpment at the eastern entrance of Wellington Harbour
  - The Parangarahu lakes and wetlands (the former drowned valleys occupied by Lakes Kohangapiripiri and Kohangatera).
- e. To advocate for the protection of the geological features, the raised beaches and interglacial marine terraces along the southern coast, from inappropriate use and development.

### *Cultural heritage*

- f. To support the protection of significant modified landscape features of the historic Pencarrow Lighthouse and the Baring Head Lighthouse, from inappropriate use or development<sup>20</sup>.

### *Land management*

- g. To keep the Gollans Valley remote area free from formal tracks and developments.

### *Visitor services*

- h. To manage the small-scale picnic facility at Butterfly Creek.
- i. To maintain the following as secondary entrances to the park:
  - Eastbourne: Burdans Gate, Korohiwa Bay (bus barn), Kowhai Street, Muritai Park and MacKenzie Road
  - Days Bay: Williams Park (Kereru Track), Ferry Road, Korimako Road
  - York Bay: Kaitawa Road
  - Lowry Bay: Cheviot Road, Dillon Street
  - Point Howard: Howard Road, Ngaumatau Road
  - Wainuiomata Hill Road: near the lookout
  - Wainuiomata: Lees Grove, Fraser Street, Gardiner Grove, Stanley Street, Puriri Street and Broad Gully
  - Moana Road (Days Bay).

### *Partnership in parks*

- j. To recognise the Port Nicholson Block Trust (the Trust) relationship to East Harbour Regional Park (Parangarahu Lakes) through participation in a Roopu Tiaki (advisory group) to develop a memorandum of understanding on the management of the Parangarahu area which will include, but not be limited to:
  - Ecological restoration of the Kohangatera and Kohangapiripiri Lakes and their waterways
  - Access for cultural harvesting
  - Provisions around the Trust exercising kaitiaki over sites of significance
  - Approval process for the use or removal of natural materials for commercial activities/purposes in the Parangarahu lakes area.
- k. To liaise with, in regards to decision making, Hutt City Council, the Department of Conservation, and the New Zealand Historic Places Trust on the management and use of the land to provide an integrated approach to environmental management programmes and recreational activities.
- l. To seek and gain approval of Hutt City Council, as landowner, if negotiating the disposal, right-of-way or lease of land for periods of greater than five years.
- m. To liaise with Hutt City Council regarding provision of vehicle parking areas, where practicable, at key park entrances.
- n. To gain approval of Hutt City Council for any new commemorative tree planting on land owned by that Council.
- o. To support the partnership with Mainland Island Restoration Operation (MIRO) and East Harbour Environmental Association in meeting the outcomes of this plan.
- p. To ensure that any new partnerships contribute to advocacy, restoration or education outcomes for East Harbour Regional Park.

---

<sup>20</sup> The Historic Pencarrow Lighthouse is owned by the Historic Places Trust as well as the small footprint of land on which it sits.

Table 5 – Significant indigenous environmental areas and features - East Harbour Regional Park

AREA	DESCRIPTION	REASONS FOR SIGNIFICANCE
<p>Northern Forest and Gollans Valley Remote Area</p>	<p>Throughout northern block.</p> <p>Eastbourne Hills – predominantly covered in lowland beech forest – black beech (<i>Nothofagus solandri</i> var <i>solandri</i>) dominate on dry, exposed ridges and hard beech (<i>N. truncata</i>) on shallow slopes.</p> <p>Lowland podocarp/broadleaf forest found in valleys of lower Butterfly Creek and middle reaches of Gollans Stream.</p>	<p>Diverse mix of native plant communities.</p> <p>264 species of native vascular plants recorded in area, including 10 regionally threatened species and one endemic species (<i>Libertia edgariae</i>).</p> <p>One of the richest orchid floras for an area of this size with 33 species recorded.</p> <p>Wide range of native bird species present: tui, bellbird, grey warbler, fantail, silvereye, rifleman, tomtit, shining cuckoo, kereru, whitehead, morepork, long-tailed cuckoo and New Zealand falcon.</p> <p>Good numbers of Wainuia sp. land snails present.</p> <p>Forest Ringlet butterfly.</p> <p>Northern rata (<i>Metrosideros robusta</i>) found throughout hills. There are large stands of terrestrial rata, but epiphytic rata are also present.</p> <p>Podocarps present: mature rimu (<i>Dacrydium cupressinum</i>), miro (<i>Stachypitys ferrugineus</i>), matai (<i>Prumnopitys taxifolia</i>) and kahikatea (<i>Dacrycarpus dacrydioides</i>). Pukatea also common emergent species.</p> <p>86 species of moss have been recorded in Butterfly Creek area and 105 species of fungi in the park as a whole.</p>
<p>Gollans Stream, Butterfly Creek</p>	<p>The upper reaches of these streams pass through relatively pristine beech and podocarp/broadleaf forest.</p> <p>Gollans Stream is about 14 kilometres long and has a catchment of 1,700 hectares.</p>	<p>Nine species of native freshwater fish have been recorded in Gollans Stream and Butterfly Creek. Some of these species may no longer be present because of built and natural barriers at the coast that restrict fish migration between freshwater and the sea.</p> <p>Recent surveys indicate long finned eels, giant kokopu, koura, banded kokopu.</p>

AREA	DESCRIPTION	REASONS FOR SIGNIFICANCE
Pencarrow Lakes and wetlands	<p>Kohangapiripiri – freshwater lake fed by Cameron Creek. Lake is about 13 hectares, and 1-2 metres deep with 43 hectares of wetland.</p> <p>Kohangatera – slightly more brackish than Kohangapiripiri. Fed by Gollans Stream. 17 hectares with 150 hectares of wetland.</p> <p>The lakes are separated from sea by gravel beach ridges.</p>	<p>Wetlands support highly indigenous plant communities in a relatively unmodified state – identified as wetlands of national importance for biodiversity. There are a number of regionally threatened species, including two aquatic plants – <i>Lepilaena bilocularis</i> and <i>Ruppia polycarpa</i> and three semi-aquatics – <i>Crassula kirkii</i>, <i>Glossostigma diandrum</i> and <i>Ranunculus macropus</i>. Also regarded as locally significant are – <i>Eryngium vesiculosum</i> (sea holly), <i>Glossostigma elatinoides</i>, <i>Gratiola sexdentata</i>, <i>Limosella lineate</i> (mudwort) and <i>Scheonoplectus validus</i> (clubrush).</p> <p>30 bird species have been recorded for the two lakes.</p> <p>Native fish, including long finned eels, giant kokopu and bullies.</p> <p>Gravel beaches are outside the park but are important because they preserve a unique record of historical uplifts, support a rare biotic community (including <i>Muehlenbeckia ephedrodes</i>) and are a natural water levelling mechanism for the lake and gateway for fish populations.</p>
Baring Head		The rare spotted skink ( <i>Oligosoma lineocellatum</i> ) present.

#### 6.4.6 Projected changes

Refer to Map 10 (following pages).

- Investigate development of a 'marked route' access from behind the Wainuiomata Golf Course, linking into the existing track network in the northern forest along the ridgeline.
- Work with MIRO on ecological restoration of parts of the Northern Forest, including species reintroduction.
- Work with Hutt City Council on a possible recreational link over the Wainuiomata Road between East Harbour Regional Park (Northern Forest) and Wainuiomata mountain bike park.

#### 6.4.7 Park Maps

The following pages contain:

- Map 9: East Harbour Regional Park – Northern Forest in 2010
- Map 10: East Harbour Regional Park – Northern Forest projected future changes
- Map 11: East Harbour Regional Park – Parangarahu Lakes area and Baring Head in 2010.

Note: There is no East Harbour Regional Park – Parangarahu Lakes area and Baring Head projected future changes map. This will be reviewed when the new management regime for Parangarahu Lakes is finalised.

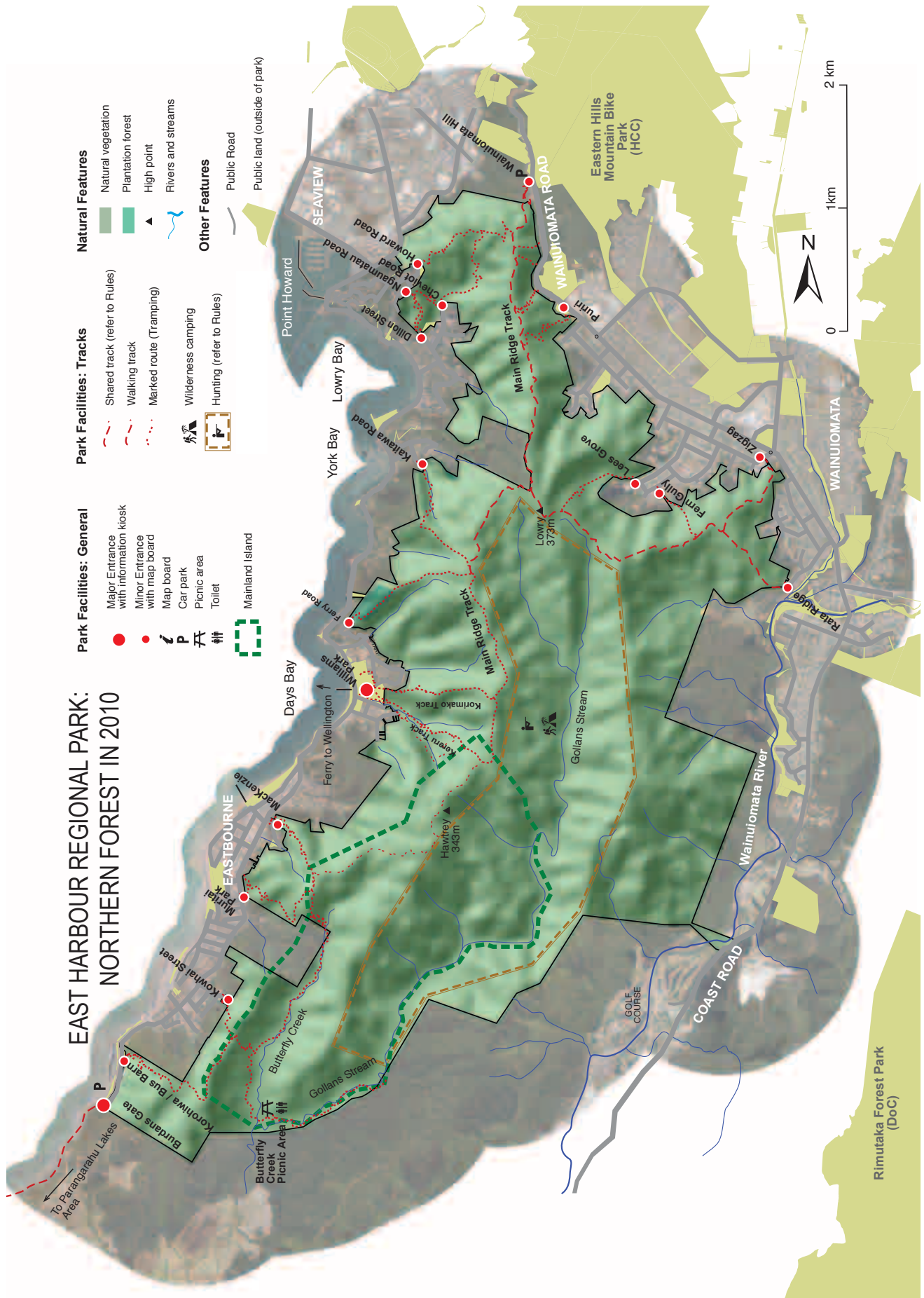
#### For more information

*East Harbour Regional Park Resource Statement* (Greater Wellington, 2007)

*Wetlands Action Plan* (Greater Wellington, 2003)

*A landscape restoration plan for the Kohanga Lakes Block* (Park, 2007)

# EAST HARBOUR REGIONAL PARK: NORTHERN FOREST IN 2010



- Park Facilities: General**
- Major Entrance with information kiosk
  - Minor Entrance with map board
  - Map board
  - Car park
  - Picnic area
  - Toilet
  - Mainland Island
- Park Facilities: Tracks**
- Shared track (refer to Rules)
  - Walking track
  - Marked route (Tramping)
  - Wilderness camping
  - Hunting (refer to Rules)
- Natural Features**
- Natural vegetation
  - Plantation forest
  - High point
  - Rivers and streams
- Other Features**
- Public Road
  - Public land (outside of park)



# EAST HARBOUR REGIONAL PARK: NORTHERN FOREST - Projected future changes

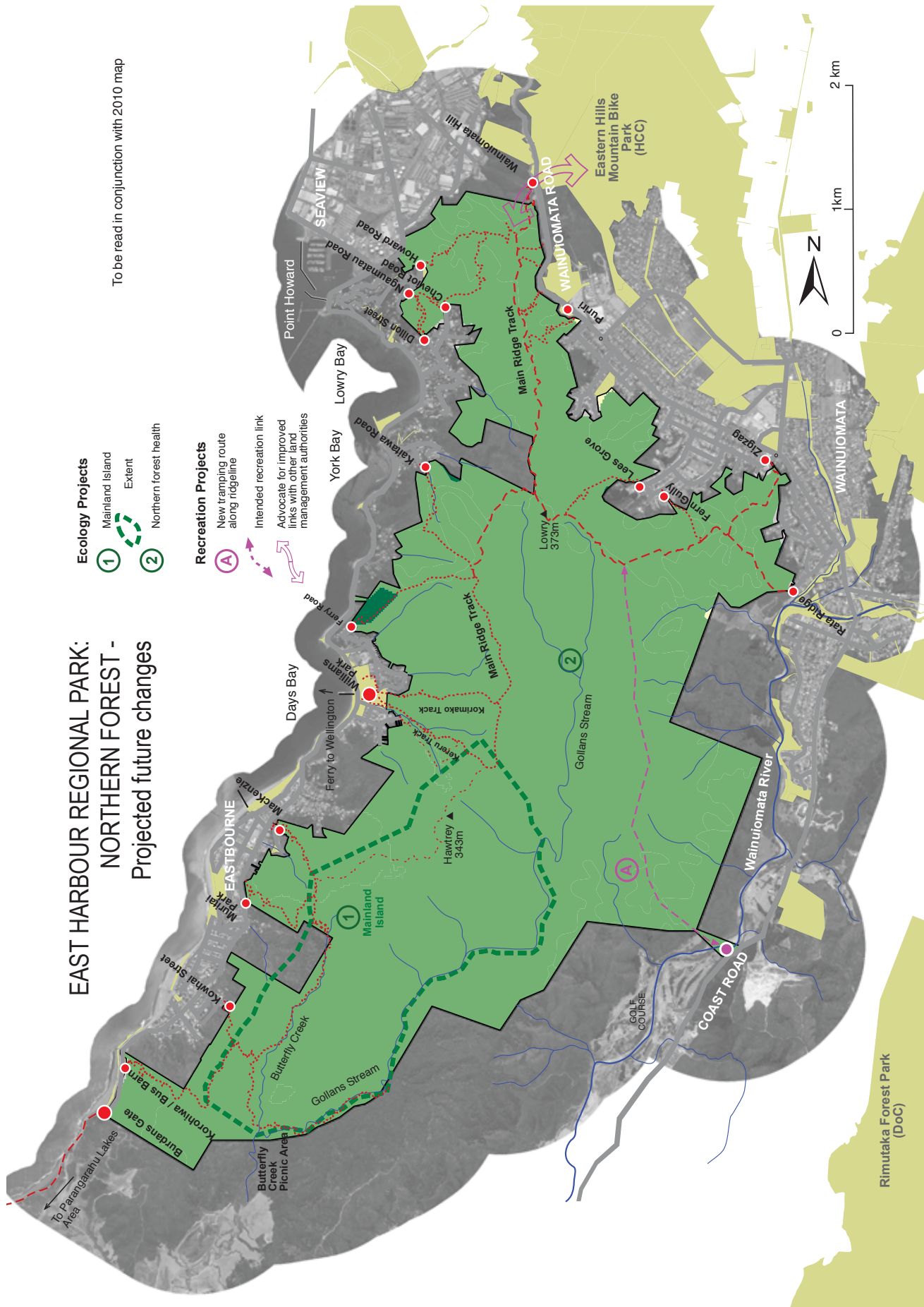
To be read in conjunction with 2010 map

### Ecology Projects

- 1 Mainland island Extent
- 2 Northern forest health

### Recreation Projects

- A New tramping route along ridgeline
- B Intended recreation link
- C Advocate for improved links with other land management authorities



# EAST HARBOUR REGIONAL PARK - Parangarahu Lakes Area & Baring Head in 2010

Note: No projected future changes map is provided for in this plan.

