

Rules for use and development



7 Rules for use and development

7.1 Introduction

This part of the plan outlines the rules relating to the provision and management of recreational and non-recreational activities in the Greater Wellington parks network.

Within the parks a range of activities are offered. As activities have potential impacts on other park visitors and the environment, they need to be managed by way of Greater Wellington giving authority to each of these activities. Each activity is identified as fitting one of the following four categories, which determines what type of permission level applies and what process any activity is subject to.

- Allowed activities
- Managed activities
- Restricted activities
- Prohibited activities

Table 9 provides a summary of the activities by park.

Table 9 - Rules applying to activities in the parks network

Note: The following table is intended as a guide. Refer to specific rules for detailed requirements.

ACTIVITY IN PARKS	AKATARAWA	BATTLE HILL	BELMONT	EAST HARBOUR NORTHERN FOREST	EAST HARBOUR PARANGARAHU/ BARING HEAD	KAITOKE	PAKURATAHI	QUEEN ELIZABETH	WAINUIOMATA	SPECIFIC RULES
Aircraft landings	→	→	→	→	→	→	→	→	→	7.4
Animals, excluding dogs/horses	→	→	→	→	→	→	→	→	→	7.4
Ashes – burial/spreading	✘	✘	✘	✘	✘	✘	✘	✘	✘	7.5
Camping (designated sites)	✘	○	○	✘	✘	○	✘	✘	✘	7.3.1 – .5
Camping (wilderness based)	✓	✘	✘	✓	✘	✓	✓	✘	✓	7.3.1-2 7.3.6 – .8
Collecting natural materials	○	○	○	○	○	○	○	○	○	7.3
Commercial activity	→	→	→	→	→	→	→	→	→	7.4
Dog walking	✓	✘	✓*	✓	✘	✓	✓	✓*	✓	7.2.2 – .6 *excludes farm areas
Events (commercial, or larger than 30 people)	→	→	→	→	→	→	→	→	→	7.4
Filming (commercial)	→	→	→	→	→	→	→	→	→	7.4
Firearms (refer also Hunting)	→	✘	✘	→	✘	→	→	✘	✘	7.3.1-2 7.3.10-12
Fires (open)	○	✓	○	○	○	✓	○	○	○	7.3.2, 7.3.17 -19
Fireworks	✘	✘	✘	✘	✘	✘	✘	✘	✘	7.5

ACTIVITY IN PARKS	AKATARAWA	BATTLE HILL	BELMONT	EAST HARBOUR NORTHERN FOREST	EAST HARBOUR PARANGARAHU/ BARING HEAD	KAITOKE	PAKURATAHI	QUEEN ELIZABETH	WAINUIOMATA	SPECIFIC RULES
Hang gliding/ para penting	○	○	○	×	○	×	○	○	×	7.3.2
Horse riding	○	✓	✓	×	○	○	○	✓	×	7.2.2, 7.2.7-11, 7.2.15-16
Hunting	○	×	×	○	×	○	○	×	○	7.3.2, 7.3.10-12
Informal games	n/a	✓	✓	n/a	n/a	✓	✓	✓	✓	7.2.2-.3, 7.2.14
Lease/licence	➔	➔	➔	➔	➔	➔	➔	➔	➔	7.4
Motorised recreation (Cat A: club/casual)	○	×	×	×	×	×	×	×	×	7.3.2., 7.3.13-16
Motorised recreation (Cat B: special events)	➔	➔	➔	➔	×	➔	➔	×	➔	7.4.3
Mountain biking	✓	✓	✓	✓	✓	✓	✓	✓	✓	7.2.2-.3, 7.2.12-13 7.2.15-16
Picnicking	✓	✓	✓	✓	✓	✓	✓	✓	✓	7.2.2, 7.2.14
Swimming	✓	✓	✓	✓	✓	✓	✓	✓	✓	7.2.2, 7.2.17-18
Walking, tramping running	✓	✓	✓	✓	✓	✓	✓	✓	✓	7.2.2-.3, 7.2.15 7.2.19-20

ACTIVITY CATEGORY

✓ Allowed

○ Managed

➔ Restricted

×

7.2 Allowed activities

- 7.2.1 These are activities that are generally “allowed” in all parks, but may be subject to restrictions in order to protect park values and provide for the health, safety and well being of visitors.
- 7.2.2 The following activities are allowed to be undertaken by individuals or groups for non-commercial purposes and may be subject to certain conditions and temporary restrictions:
- a. Walking, hiking, tramping
 - b. Running
 - c. Picnicking, barbequing
 - d. Informal group games
 - e. Swimming
 - f. Filming or photography for personal, family and non-commercial purposes²³
 - g. Mountain biking on designated shared trails, and with consideration to other users on shared trails, refer to Rules 7.2.15 - 16
 - h. Dog walking, where responsible dog handling practices are followed at all times refer to Rules 7.2.4-6
 - i. Horse riding on designated shared trails, and with consideration to other users on shared trails, refer to Rules 7.2.15 – 16
 - j. Fires in designated areas at Battle Hill and Kaitoke Regional Parks.
- 7.2.3 In order to protect the park environment, the health, safety and well-being of other users and to facilitate park operations, restrictions may be placed on “allowed” or “managed” activities relating to:
- a. Group size (up to 30 people is considered to be allowable)
 - b. Time of the day and duration of the activity (assessed on impact)
 - c. Location (ensuring that there is no user conflict with park users or park occupiers)
 - d. Season or time of the year (restrictions in regards to: events during public holidays, and farming, eg, lambing)
 - e. Infrastructure conditions (any use of tents, marquees, stages, etc.)
 - f. Environmental conditions (any impact on the land, surrounding environment)
 - g. Where the activities are large in scale (over 30 people), or may have other impact, they will be managed through a concession (refer to Restricted activities in Rule 7.4).

Explanation

Allowed activities are largely informal, unstructured activities that are traditionally associated with parks. They have a low impact on park values and other users and need few restrictions. The public do not need to book these activities or seek specific approval for them.

Some activities, including mountain biking and horse riding, will only be allowed on identified tracks or areas, otherwise these are specifically prohibited.

²³ Definition of “Non commercial” – the person undertaking the filming/photography or any of the subjects are not receiving any form of payment or gain for the activity.

Dogs

- 7.2.4 Dogs must be under control as defined in the Dog Control Act 1996 in Greater Wellington parks.
- 7.2.5 Dogs are specifically prohibited in:
- Battle Hill Farm Forest Park
 - Farmed areas of Belmont Regional Park and Queen Elizabeth Park
 - Parangarahu Lakes (East Harbour Regional Park).
- 7.2.6 Notwithstanding 7.2.5, dogs are allowed for:
- farming purposes (where they are under the control of a Greater Wellington officer or lessee)
 - disability assistance (certified to assist a person with a disability)
 - hunting purposes (where a hunting permit specifies the use of a dog).

Horse riding

- 7.2.7 Casual horse riding is allowed on designated shared trails in Queen Elizabeth (excluding the coastal dune area), Belmont and Battle Hill Farm Forest Parks only (refer to Rules 7.2.15 - 16).
- 7.2.8 Horse riding may be undertaken through the allocation of a permit in East Harbour (Parangarahu Lakes) and Kaitoke Regional Parks, Akatarawa and Pakuratahi Forests.
- 7.2.9 Horse riding in Pakuratahi Forest is prohibited on the Mt Climie Road, and above Ladle Bend bridge on the Rimutaka Incline Track.
- 7.2.10 Horse riding adjacent to the Parangarahu Lakes at East Harbour is only permitted on the Cameron Ridge Track, and prohibited elsewhere.
- 7.2.11 Horse riding may be restricted to some locations or conditions (refer to Rule 7.2.3).

Mountain biking

- 7.2.12 Mountain biking is allowed on roads and shared tracks (refer to Rules 7.2.15 -16, and park maps).
- 7.2.13 Mountain biking may be restricted to some locations or conditions (refer to Rule 7.2.3).

Picnics, barbequing, informal gatherings and group games

- 7.2.14 Picnics, barbequing, informal gatherings and group games and other similar activities are allowed and some facilities are provided, but restrictions may apply to some locations or conditions (refer Rule 7.2.3).

Shared track use

- 7.2.15 All users of shared tracks must respect and be courteous to other users.
- 7.2.16 When riding, users must be especially cautious around walkers and other shared track users.

Swimming

- 7.2.17 Swimming, kayaking and other similar activities are allowed, but restrictions may apply to some locations (refer to Rule 7.2.3).
- 7.2.18 Swimming is prohibited in any water catchment dam, water reservoir or water supply facility.

Walking, tramping, running

- 7.2.19 Walking, hiking, tramping, running and other similar activities are allowed on all parks network tracks, open country and farmed areas, but restrictions may apply to some locations (refer to Rule 7.2.3).
- 7.2.20 Where these activities are undertaken through untracked bush or farmland, participants are encouraged to consider how they can minimise the impact of their activity on the surrounding environment.

7.3 Managed activities

- 7.3.1 Managed activities are generally undertaken in a specific location and may involve temporary allocation of a park area or structure for a specific use.

Approval for partaking in a managed activity will be by way of a “permit” which is issued by a Greater Wellington park ranger or a Greater Wellington authorised officer.

- 7.3.2 Managed activities (via a permit system or ranger approval):

- a. Camping at designated sites (as per each park map)
- b. Designated picnic areas or specified site reservations for groups
- c. Recreational hunting in specified areas
- d. Usage of key park facilities
- e. Motorised recreation (club/casual use) in Akatarawa Forest
- f. Removal of exotic materials, eg, pine firewood
- g. Lighting fires outside designated areas
- h. Conducting research
- i. Collection of natural materials, eg, seeds for propagation
- j. Horse riding at Pakuratahi and Akatarawa Forests, and East Harbour
- k. Hunting including carrying a firearm in Akatarawa, East Harbour (northern area), Kaitoke, Pakuratahi
- l. Parapenting and gliding at designated sites
- m. Other activities identified in this parks network plan where a permit is required.

Explanation

Permits will be allocated for activities where there is a need to regulate the temporary exclusive use of an area, and to avoid over-allocation of resources and conflict between users.

Key park facilities currently include the Ken Gray Educational Centre at Battle Hill and the Stratton Street Woolshed at Belmont.

Motorised recreation, including motorbikes and 4WD vehicles, is only permitted in the identified areas of the Akatarawa Forest.

Camping

- 7.3.3 To provide camping at the following designated sites:
- a. Battle Hill Farm Forest Park: Battle Hill entrance campground
 - b. Belmont Regional Park: Stratton Street entrance campground and Dry Creek entrance campground
 - c. Kaitoke Regional Park: Kaitoke entrance campground.
- 7.3.4 Camping may be restricted to some locations or conditions (refer to Rule 7.2.3).
- 7.3.5 Motor homes, campervans, and caravans may be restricted to some locations or conditions (refer to Rule 7.2.3).
- 7.3.6 Wilderness camping will be allowed in the Akatarawa and Pakuratahi Forests, East Harbour Regional Park northern forest area, Kaitoke Regional Park and Wainuiomata Recreation Area, no closer than 500 metres from any road entrance.
- 7.3.7 Wilderness campers are required to carry in and out all equipment and rubbish.
- 7.3.8 Wilderness camping may be restricted to certain locations or conditions (refer to Rule 7.2.3).

Designated sites

- 7.3.9 Greater Wellington may provide designated sites in some parks for group activities that exceed the park's allowed group size when the location has the capacity to:
- provide certainty of allocation
 - provide for a demand from large and organised groups
 - reduce conflict between park users for a range of activities
 - concentrate activities in locations where adverse impacts from the activities are less likely to occur.

Hunting

- 7.3.10 Recreational hunting will be managed only in the backcountry of: Akatarawa and Pakuratahi Forests, Kaitoke Regional Park, East Harbour Regional Park northern forest and Wainuiomata Recreation area only (refer to maps for specified areas).
- 7.3.11 Recreational hunting will be for identified or particular game species and/or season, by permit. Hunting will take into account the management of ecological values and public safety.
- 7.3.12 Recreational hunting does not take priority over other pest animal management techniques.

Motorised recreation

- 7.3.13 Motorised recreation (Category A) will be managed only on specified tracks in the Akatarawa Forest (refer Map 20).
- 7.3.14 Motorised recreation (Category B) will otherwise be managed as a restricted activity (refer to 7.4.3.f).

- 7.3.15 For management purposes Greater Wellington may open or close part of a track used for motorised recreation due to:
- Operational activities including but not limited to; harvesting, pest management control
 - An activity or event having been granted the right to restrict public access as part of approved conditions
 - Track maintenance or public safety.

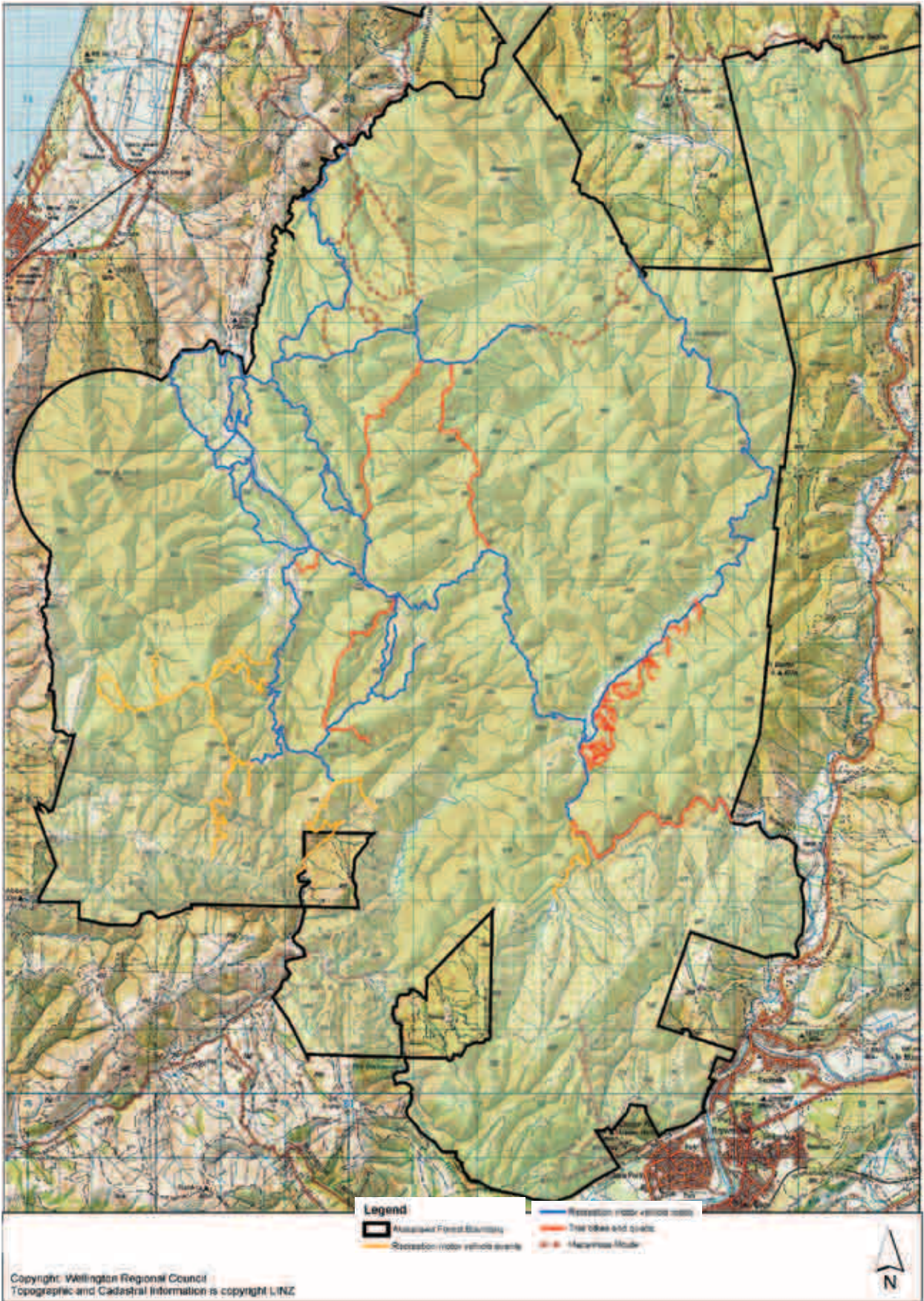
- 7.3.16 All clubs and individuals using motorised vehicles in the Akatarawa Forest are required to adhere to the principles of the following Tread Lightly code:

T Travel and recreate with minimum impact
R Respect the environment
E Educate yourself, plan and prepare before you go
A Allow for future use of the outdoors, leave it better than you found it
D Discover the rewards of responsible recreation
LIGHTLY

Explanation

This plan provides for two categories of motorised recreation: Category A (club/casual use in Akatarawa Forest) and Category B (special one-off events on parks (refer to Rule 7.4 Restricted Activities)).

The Akatarawa Forest is the main location for motorised recreation by 'rugged' 4WD vehicles and trail bikes in the Wellington Region. Greater Wellington works closely with Akatarawa Recreational Access Committee (ARAC), a community group



Map 20 – Akatarawa Forest Motorised Recreation Access Tracks

who partners with the Council to ensure appropriate use and care of the area for motorised activities. Greater Wellington is working with ARAC to develop a protocol for managing the track network by:

- *Monitoring track use (by type), track condition, and impacts on the environment (including sedimentation)*
- *Improving public safety, minimising conflicts between users*
- *Determining appropriate track opening, rehabilitation, temporary and permanent closures*
- *Identifying notification procedures.*

When finalised, this protocol will be available on the Greater Wellington website.

Acknowledging that there is an increase in interest in gaining access to Greater Wellington parks for undemanding 4WD experiences (called 'shiny' 4WDs), a further category for this type of motorised recreation has been provided for. Motorised recreation (Category B) allows for a limited number of 4WD events to occur in some parks as a concession approved by the manager.

Motorised recreation is managed to take account of noise, public safety and the protection of ecological values. Motorised recreation will be monitored and areas for off-track use managed by: monitoring sediment issues associated with use by vehicles; managing track rehabilitation in conjunction with clubs/users; and managing temporary and permanent closures and limits on type of vehicles as tools to regulate effects.

Fires

- 7.3.17 Open fires for cooking purposes or similar will only be permitted at designated sites in Battle Hill Farm Forest Park and Kaitoke Regional Park, subject to approval and fire restrictions.
- 7.3.18 Portable gas barbeques and camping stoves will be allowed in parks, subject to fire restrictions. These must be attended at all times.
- 7.3.19 Greater Wellington may use open fires for operational purposes where the necessary fire permits have been obtained from the relevant authority.

7.4 Restricted activities

Restricted activities are those that are not specifically "allowed" or "managed" through a permit system, or are not "prohibited" in this management plan and require a case-by-case assessment.

Each application is considered on its individual merits, compatibility and appropriateness to the location. Some applications may need to be publicly notified, and can be either approved, subject to conditions, or declined.

They may:

- Be new activities and developments (Refer to Policy 85)
- Involve the exclusive use of an area for an extended period of time
- Require the development of permanent structures and buildings
- Include commercial activities
- Be large scale events and a range of other uses.

- 7.4.1 Greater Wellington will give consideration to, and where required approval for, all activities involving occupation or temporary use of an area of the parks or forests, or their resources if they are not:
- Identified in this parks network plan as allowed activities in Rules 7.2
 - Managed via a permit process as identified in Rules 7.3
 - Prohibited by this plan as identified in Rules 7.5.
- 7.4.2 Greater Wellington will manage approved activities that are not “allowed”, “managed by permit” or “prohibited” in this plan as either a:
- Concession or
 - Easement or
 - Lease or
 - Licence and
 - With any conditions as required by Council, refer Rule 7.4.11.
- 7.4.3 Restricted activities may include, but are not limited to:
- Commercial activities (including concerts, multisport events, guiding tours, selling food, hiring equipment or offering transport)
 - Filming and photography; (refer to Filming explanation below)
 - Conducting events (eg, multi-sports)
 - Conducting one-of activities involving site occupation or use
 - Building structures or shelters or campsites
 - Motorised recreation (Category B) for special one-off events
 - Approval of the fill or cut of earthworks (minimum of 10 m³) either internally within Greater Wellington or externally applied for by another party
 - Infrastructure upgrades

- Other activities identified in this parks network plan as restricted.

Filming explanation

Greater Wellington parks have been the backdrop for a number of films and commercials which have helped to promote Wellington as a good film location and contribute to the regional economy. Greater Wellington, in conjunction with Film Wellington and Film NZ, aims to facilitate filming opportunities within parks. To this end, Greater Wellington has worked with the film industry to develop a filming protocol which takes into account the need for timely processes and appropriate practices to protect park values.

This filming protocol aligns, where possible, with the Film New Zealand and the Department of Conservation’s Code of Practice: Filming on Public Conservation lands which outlines the screen production industry’s sustainability commitment and practices.

Public notification

- 7.4.4 Applications for restricted activities (concessions, easements, leases and licences) will be publicly notified when:
- The term sought exceeds 10 years
 - The activity occurs on land held under the Reserves Act and public notification is required under that Act
 - Where it falls under Section 138 of the Local Government Act 2002
 - In the opinion of Greater Wellington it is in the public interest
 - It receives requests for easements that would significantly affect the park land
 - An application to construct or modify a permanent utility would significantly alter the nature, scale or intensity of the effect on the park.

Information required with application (concessions, easements, leases or licences):

7.4.5 All applications are required to include the following relevant information:

- a. A description of the proposed activity, including the preferred location, number of people involved and the duration/frequency of the activity
- b. An explanation of how the activity is aligned with the parks management focus
- c. A description of the impacts that the activity will have on the immediate and surrounding environment (including affected species)
- d. An assessment that demonstrates that no other suitable location in or outside of the park, is suitable and available for the activity
- e. A statement detailing what, if any other approvals or consents are required from other agencies
- f. Identification of any affected parties, including tangata whenua, and any consultation undertaken with these parties
- g. Where required, written confirmation that the applicants holds current public liability insurance policy cover and, where appropriate, to include fire suppression insurance
- h. Where required, a business plan for concessions, lease and licence applications for all long-term (12 months period or longer) or large scale commercial events
- i. Where the activity may use public roads, an audited traffic management plan is to be submitted with all full concession applications when the event planned will:
 - i. Close road(s) to vehicular traffic
 - ii. Disrupt vehicular traffic in any way (ie, stopping or slowing traffic flow for a period of time)

- iii. Block a footpath resulting in pedestrians needing to find an alternative route around the activity or event.

Application timeframe

- 7.4.6 To ensure adequate timeframes for processing applications for restricted activities, Greater Wellington requests that applications are received as follows:
- a. One month prior to any small (less than 150 people) activity/event
 - b. Two months prior to any large activity event (greater than 150 people) or concessionaire type activity
 - c. At least three months for any easement, licence and/or lease activity

Applications lodged for activities which cannot comply with the timeframes will be considered by additional fees may apply.

Decision making guidelines

- 7.4.7 Greater Wellington Regional Council will consider the following criteria in regards to applications for concessions, easements leases and licences:
- a. The degree to which the proposal is consistent with the park key characteristics, the management focus, any proposed concept plans and relevant policies as outlined in this plan
 - b. Whether the proposal is consistent with the reserve classification for land which is subject to the provisions of the Reserves Act 1977
 - c. Whether the proposal is consistent with all additional Acts that guide Greater Wellington in the management of the area of interest, including the Reserves Act 1977, Local Government Act 2002, Queen Elizabeth II National Trust Act 1977 and the Wellington Regional Water

- Board Act 1972, Wellington Regional Council (Water Board Functions) Act 2005 and all other relevant legislation, Greater Wellington policy, bylaws, plans and strategies
- d. Any effects on park infrastructure, approved activities, the surrounding environment and the enjoyment of other park users
 - e. The extent to which the proposal affects current or future public access
 - f. How the activity would benefit Greater Wellington parks and forests
 - g. The level of any additional benefits, enjoyment and use opportunities for park visitors, local and regional community and tangata whenua
 - h. The degree to which persons are affected (including tangata whenua) by the proposal
 - i. Any enabling of tangata whenua to enhance their hauora (long-term well-being) while sustaining the mauri of the park's natural and cultural values
 - j. Whether the proposal could reasonably be undertaken in another location, eg, on another park or on another location in the park, where the potential adverse effects would be significantly less
 - k. The degree to which the applicant has promoted appropriate behaviour in the park with respect to environmental stewardship and other park users
 - l. The degree of risk caused by the activity (in relation to biosecurity, sustainability, etc.).
- 7.4.8 Greater Wellington will give preference to licenses over leases so as not to restrict public access.
- 7.4.9 Greater Wellington will give consideration to the applicants' known or past history of meeting obligations, outcomes and results.
- 7.4.10 Decisions on whether to grant or decline an application for a concession, easement, lease, or licence shall be made in the following manner:
- a. Where the park is held under the Local Government Act 2002, or is held freehold by Greater Wellington, or under the Wellington Region Water Board Act or its amendments, then Greater Wellington shall make decisions with regards to the criteria outlined in Rule 7.4.11
 - b. Where the park is either gazetted under the Reserves Act 1977 or held as 'manage and control' under the Reserves Act 1977 or for where the Reserves Act 1977 requires the decision to be made by the Minister of Conservation then Greater Wellington shall forward its recommendations to the Minister of Conservation to make the final decision.
- Explanations**
- There are a number of existing activities on the parks that are generally compatible with the vision and outcomes of regional parks but offer an exclusive service to a selected group. The most appropriate way of providing for these existing activities and any future proposed activities of this type is by way of a licence. Leases grant a legal right to occupy land covered by the agreement. The lessee is able to carry out activities as of right when provided for under a lease without further reference to the Council, and to restrict public access to the leased land. Greater Wellington will only consider leases in exceptional circumstances, and will give preference to licences over leases.*

Restricted - imposition of conditions

- 7.4.11 When approving restricted activities, Greater Wellington can impose conditions that include, but are not limited to:
- a. The location
 - b. The duration
 - c. The time of day and year the activity may be undertaken
 - d. Measures for mitigating adverse effects on the environment and natural and heritage resources
 - e. Measures for monitoring the effects of the activity
 - f. The number of people who may participate
 - g. The use of park facilities or services
 - h. Health and safety factors
 - i. A trial period to assess the effects of the activity on the park
 - j. Payment of bonds, application fees, activity fees, and/or market based rents based on Greater Wellington rental policy
 - k. Periodic monitoring and reporting be carried out and submitted to Greater Wellington
 - l. Inclusion of termination provisions may be imposed for leases and licences where the land is required for future recreation or other public purposes
 - m. Compliance with all relevant Greater Wellington policies, bylaws and management plans, and/or local authority plans
 - n. An initial basic rate for leases and licences for where there are no applicable existing leases or licences by a registered valuer, to be assessed in light of the current market value of any equivalent leases and licences
 - o. Any other matter Greater Wellington considers relevant to ensure the activity is compatible with the outcomes of this plan.

7.5 Prohibited activities

These are activities considered to be inappropriate because of their permanent adverse effects on the environment or that are incompatible with the park characteristics and/or management focus and other approved activities.

Prohibited activities include mining, commercial resource harvesting, use of fireworks and amplified sound not associated with an approved event.

- 7.5.1 Council will prohibit activities from occurring that would have a permanent adverse impact on the park values or would significantly detract from the enjoyment and safety of other park users.
- 7.5.2 Enforcement of all activities will be through the Greater Wellington Regional Parks, Forests and Reserve Bylaw 2009.
- 7.5.3 The following activities are prohibited in all parks:
- a. Spreading of ashes or body parts
 - b. Erection of private dwellings
 - c. Depositing rubbish
 - d. Fireworks
 - e. All mining activities.

Glossary

Casual use	Identified as non-commercial activities/uses with fewer than 30 participants resulting in low impacts.
Commercial activity	Any activity where the purpose is to operate a business and/or obtain profit or gain from its operations utilising the Greater Wellington parks and forests, including Conducting a trade, business or occupation on Greater Wellington owned or managed land, or Profit and private benefit are involved.
Deeds of Recognition	An agreement between the administering Crown agency and a claimant group in recognition of their special association with a site as stated in a Statutory Acknowledgement, and specifying the nature of their input into the management of the site.
Easement	Identifies a right of access over or through land and may allow for the installation of pipelines, cables/overhead wires or utility services.
Forest health	Includes work related to caring for the health of the forest through pest control, vegetation surveys and monitoring.
Hapu	Sub tribe with common interest in land.
Iwi	Tribe, people.
High impact activity	Activities resulting in more than minor environmental/social effects.
High impact activity consideration guidelines	In considering whether an activity is "high impact", the following factors will be taken into account: <ul style="list-style-type: none"> • Size of group • Location • Duration • Time of day • Season or time of year • Infrastructure conditions • Environmental conditions • Sensitivity of the site • Level of potential public interest • Regional signification of proposed activity/event, eg, golf courses, major sporting events, shooting ranges.
Kaitiaki/kaitiakitanga	Where the exercise of guardianship/custodianship/stewardship is undertaken by tangata whenua.
Koiwi	Bones, human remains.
Lease	Exclusive rights to occupy buildings or a specified area of land. Leases are granted according to the relevant provisions of the <i>Reserves Act 1977</i> and/or <i>Wellington Regional Water Board Act 1972</i> , <i>Wellington Regional Council (Water Board Functions) Act 2005</i> .

Licence	Allows the right to occupy or work in an area but not necessarily to the exclusion of the public or other licensees. Licences may allow temporary modifications to the land, such as re-locatable buildings, campsites or facilities. Licences are granted according to the relevant provisions of the <i>Reserves Act 1977</i> and/or <i>Wellington Regional Water Board Act 1972</i> , <i>Wellington Regional Council (Water Board Functions) Act 2005</i> .
Low impact activity	Activities that are considered to result in little or no significant environmental/social impacts.
Mahinga kai	Refers to tangata whenua interests in traditional food and other natural resources and the places where those resources are obtained.
Main Entrance	Major entry point to a park, may include access to formed parking areas, park information, public amenities and facilities, and access to active and passive recreational activities and park settings.
Mainland islands	Forms of conservation management which aims to protect and restore habitats on the mainland through intensive management of introduced pests. "Mainland island" habitats are manageable areas, isolated by means of fencing, geographical features or more commonly, intensive management.
Mana whenua	Iwi having authority over land.
Mauri	Life principles present in all things.
Network Utilities	Includes works undertaken by network utility operators, as defined in Section 166 of the Resource Management Act, including: <ul style="list-style-type: none"> a) Navigation and survey aids, beacons and meteorological activities b) Services reticulation networks of local authorities c) All structures necessary for the operation of the network utility d) Privately owned aerials and antennas; and e) The operation and maintenance of the network utility. Note: this does not include roading infrastructure. Network Utility Operation/Operator has the same meaning as in Section 166 of the RMA.
Non-commercial activity	Includes any activity: <ul style="list-style-type: none"> • Where a private individual, club or any organisation will not profit or gain from the use of Greater Wellington's parks and forests • A person undertaking the activity or event, or any of the subjects are not receiving any form of payment for the activity • Where there are more than 30 participants (with the exemption of motorised recreation) • Subject to standard terms and conditions for use of parks/forests.
Open Space	Open space as defined in the Wellington Open Space Strategy & Action Plan is any area of land or water with recreational, ecological, landscape, cultural and/or historic value that provides public access.

Passive Recreation	Includes activities such as walking, cycling, nature observation and picnicking. Passive recreation provides important benefits for mental health and stress reduction.
Permits	A written authority for entry or to enable an activity or event to be undertaken on a park area for a limited period.
Partnership	Cooperative between two or more parties with a common goal, who combine resources to establish a mutual direction or complete a mutually beneficial project.
Rongoa	Traditional Māori medicine.
Secondary Entrance	Minor park entry point with limited parking and information, access to active and passive recreation activities and park settings.
Statutory Acknowledgements	Acknowledge of areas or sites with which claimant groups have a special relationship, and will be recognised in any relevant proceedings under the Resource Management Act.
Tangata whenua	People of the land.
Taonga raranga	Woven treasures.
Taonga	Treasure, artefacts.
Wilderness camping	Back-country style camping where there are no facilities provided and the style of camping remains low impact on the environment.
Utility	Refer to "Network Utility".

References/bibliography

Regional Pest Management Strategy 2009

Greater Wellington Heritage Assets Management Plan October 2008 (draft)

Greater Wellington Draft Regional Policy Statement 2009

Wellington Regional Council Plantation Forest Working Plan

Greater Wellington Regional Council Parks and Forests Concessions Guidelines 2008

Greater Wellington Accidental Discovery Protocol 2008

Greater Wellington Parks, Forests and Reserves Bylaw 2009

National Environmental Standard on Electricity Transmission

Greater Wellington's Riparian Management Strategy 2003

Wetland Action Plan, Greater Wellington 2003

NZ Native plants recommended for restoration and/or amenity purposes in Wellington Regional Parks: a report for Parks and Forest Department, Mitcalfe B, 2002