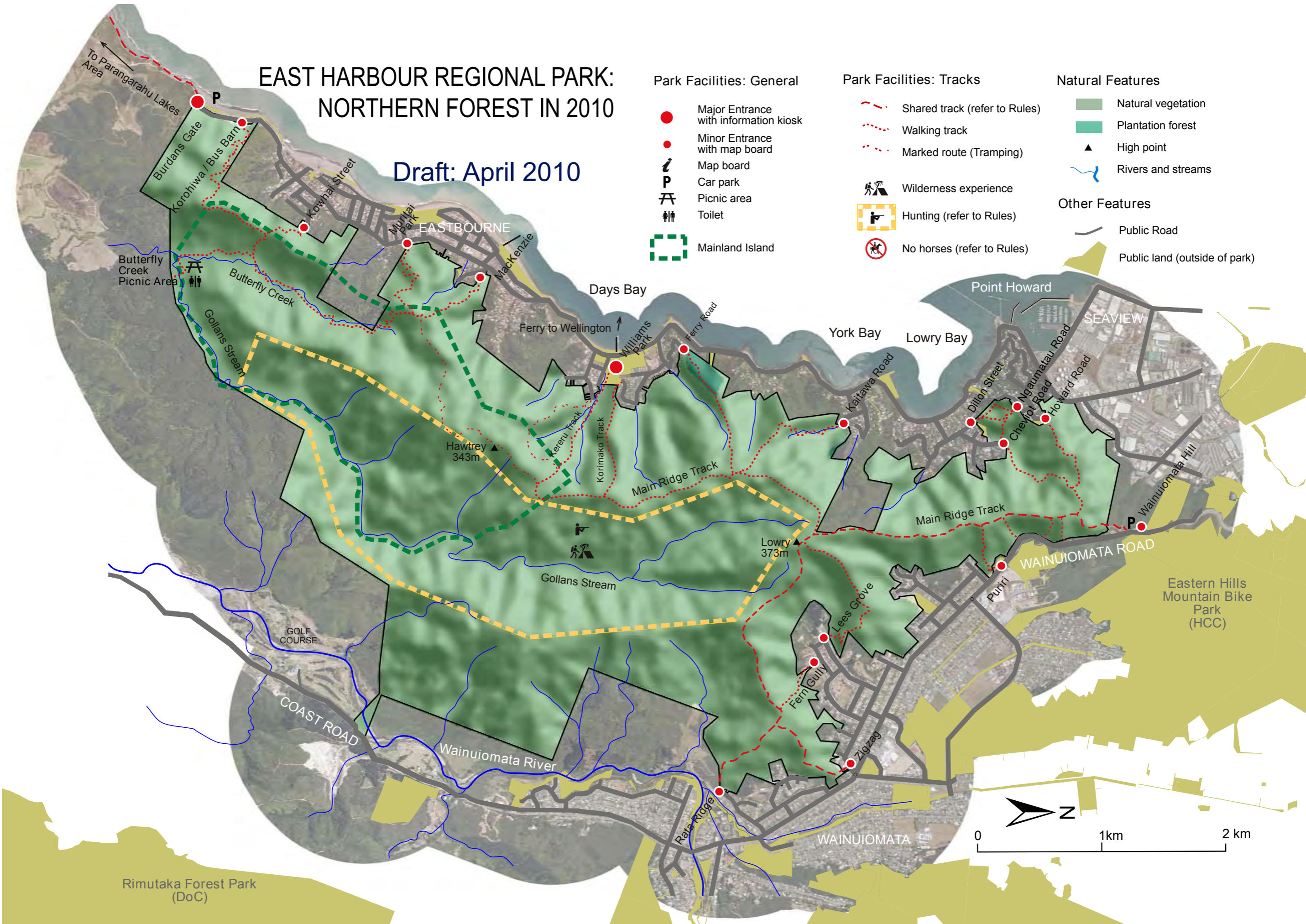


EAST HARBOUR REGIONAL PARK: NORTHERN FOREST IN 2010

Draft: April 2010



Park Facilities: General

- Major Entrance with information kiosk
- Minor Entrance with map board
- i* Map board
- P** Car park
- ⌘** Picnic area
- ♿** Toilet
- Mainland Island

Park Facilities: Tracks

- - - Shared track (refer to Rules)
- ⋯ Walking track
- ⋯ Marked route (Tramping)
- Wilderness experience
- Hunting (refer to Rules)
- No horses (refer to Rules)

Natural Features

- Natural vegetation
- Plantation forest
- ▲ High point
- ~ Rivers and streams

Other Features

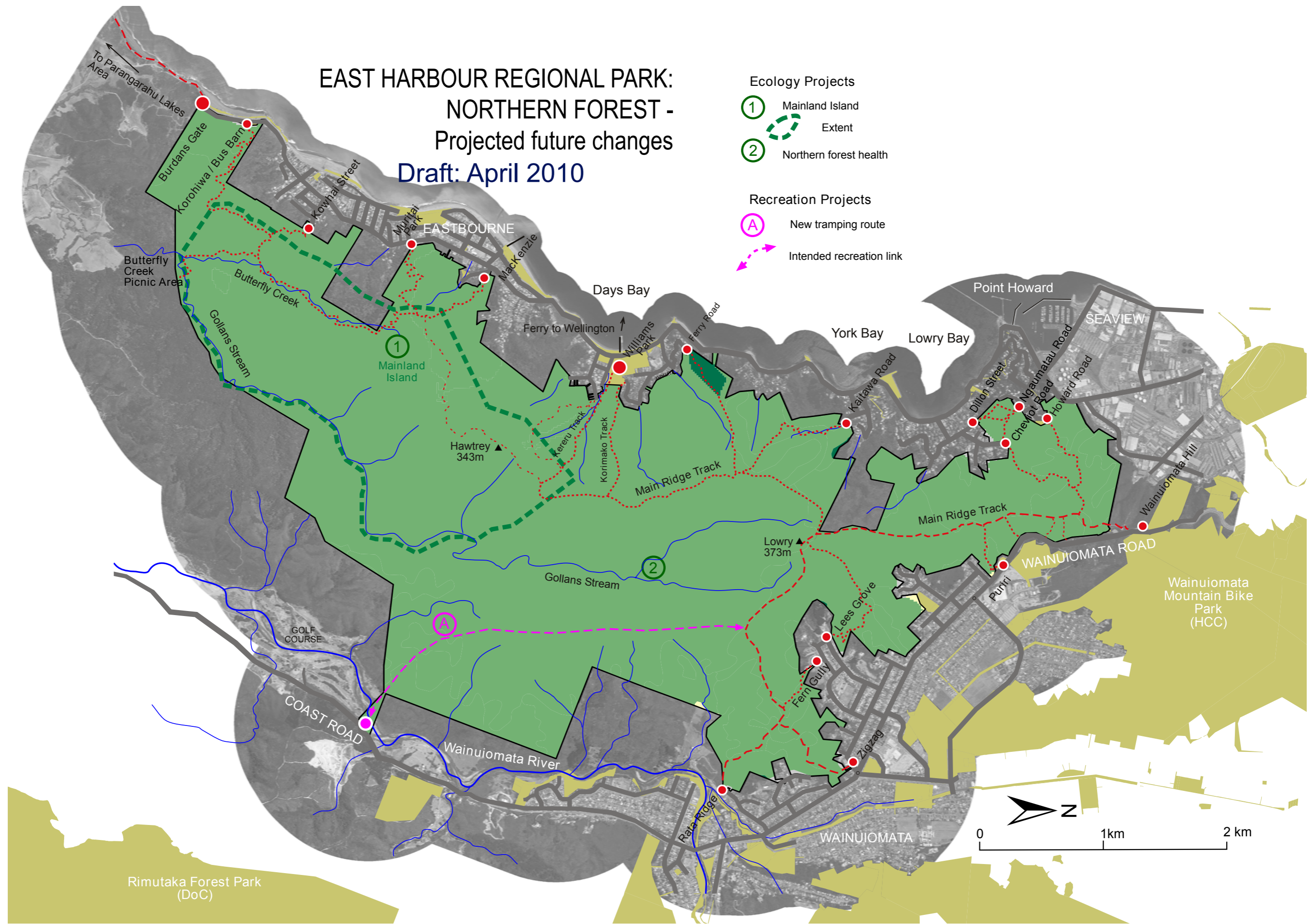
- Public Road
- Public land (outside of park)



Rimutaka Forest Park (DoC)

EAST HARBOUR REGIONAL PARK: NORTHERN FOREST - Projected future changes Draft: April 2010

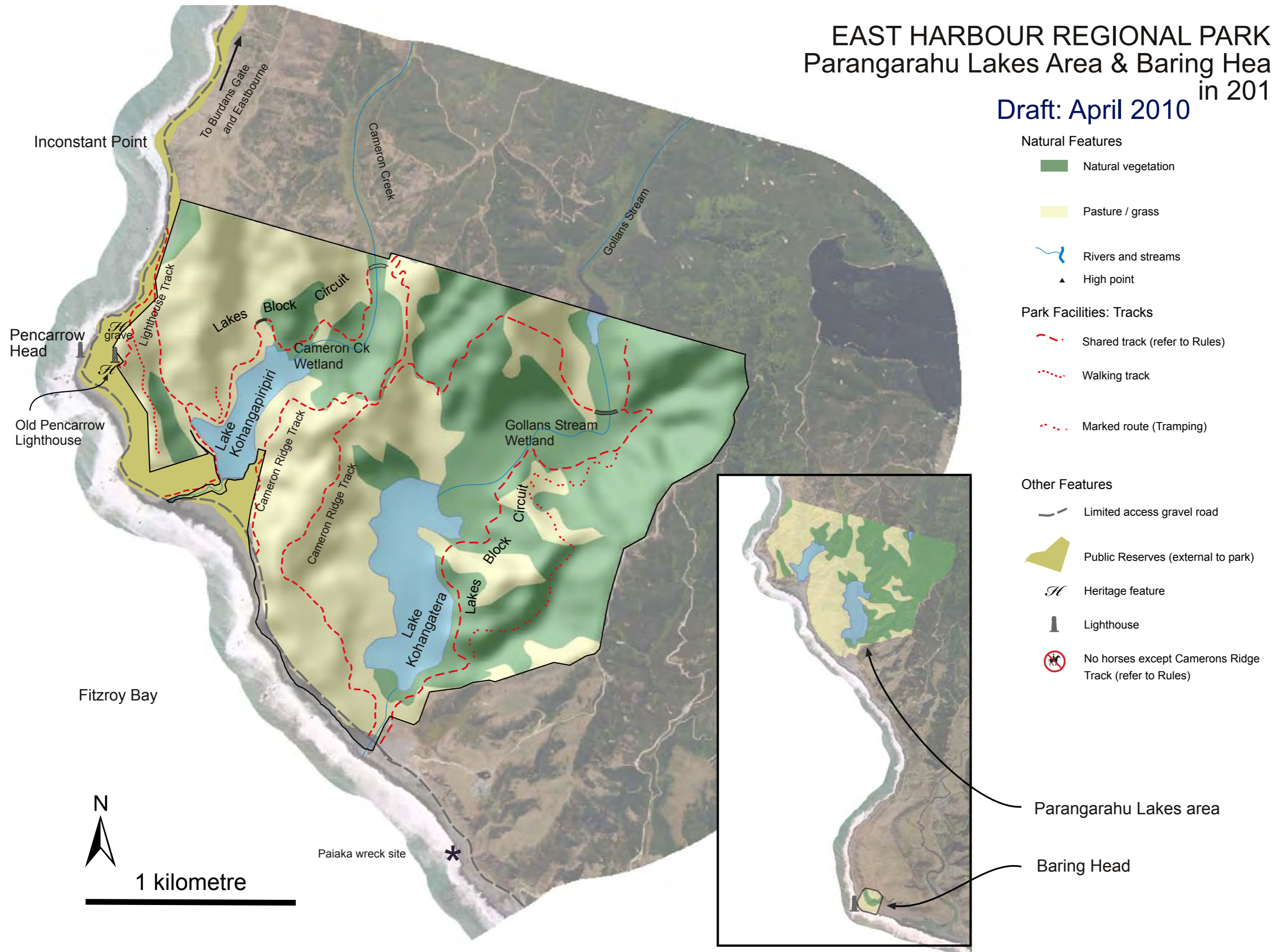
- Ecology Projects**
- ① Mainland Island
 - ② Extent
 - ③ Northern forest health
- Recreation Projects**
- A New tramping route
 - Intended recreation link



Rimutaka Forest Park (DoC)

EAST HARBOUR REGIONAL PARK - Parangarahu Lakes Area & Baring Head in 2010

Draft: April 2010



Natural Features

- Natural vegetation
- Pasture / grass
- Rivers and streams
- High point

Park Facilities: Tracks

- Shared track (refer to Rules)
- Walking track
- Marked route (Tramping)

Other Features

- Limited access gravel road
- Public Reserves (external to park)
- H Heritage feature
- Lighthouse
- ⊘ No horses except Camerons Ridge Track (refer to Rules)



Map 10: EAST HARBOUR REGIONAL PARK -
Parangarahu Lakes Area & Baring Head
- Projected future changes

Note: no map has been developed for this area until the formation of the Parangarahu Lakes Roopu Tiaki (advisory group) has been established and identified future options.