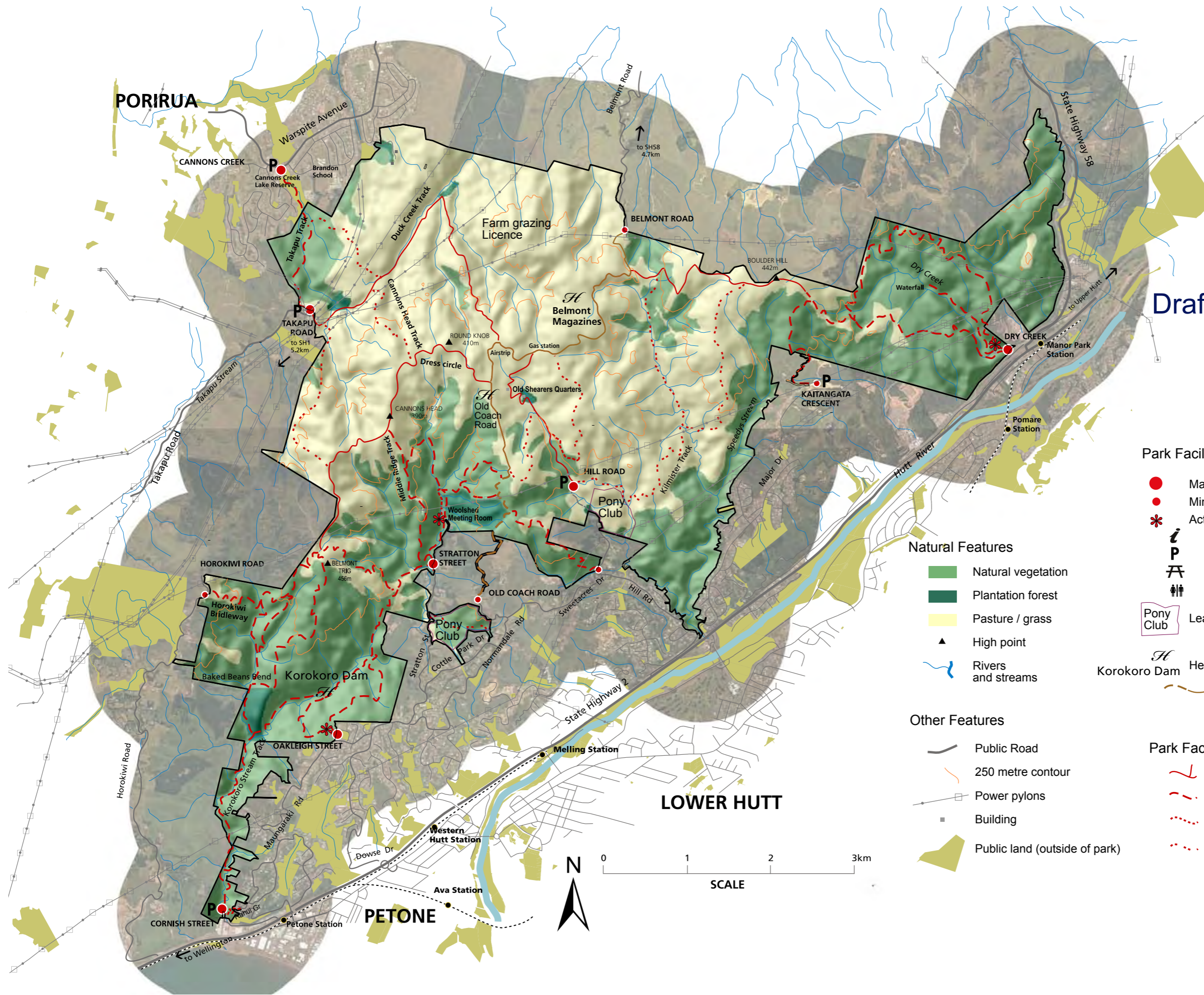


# BELMONT REGIONAL PARK in 2010

Draft: April 2010

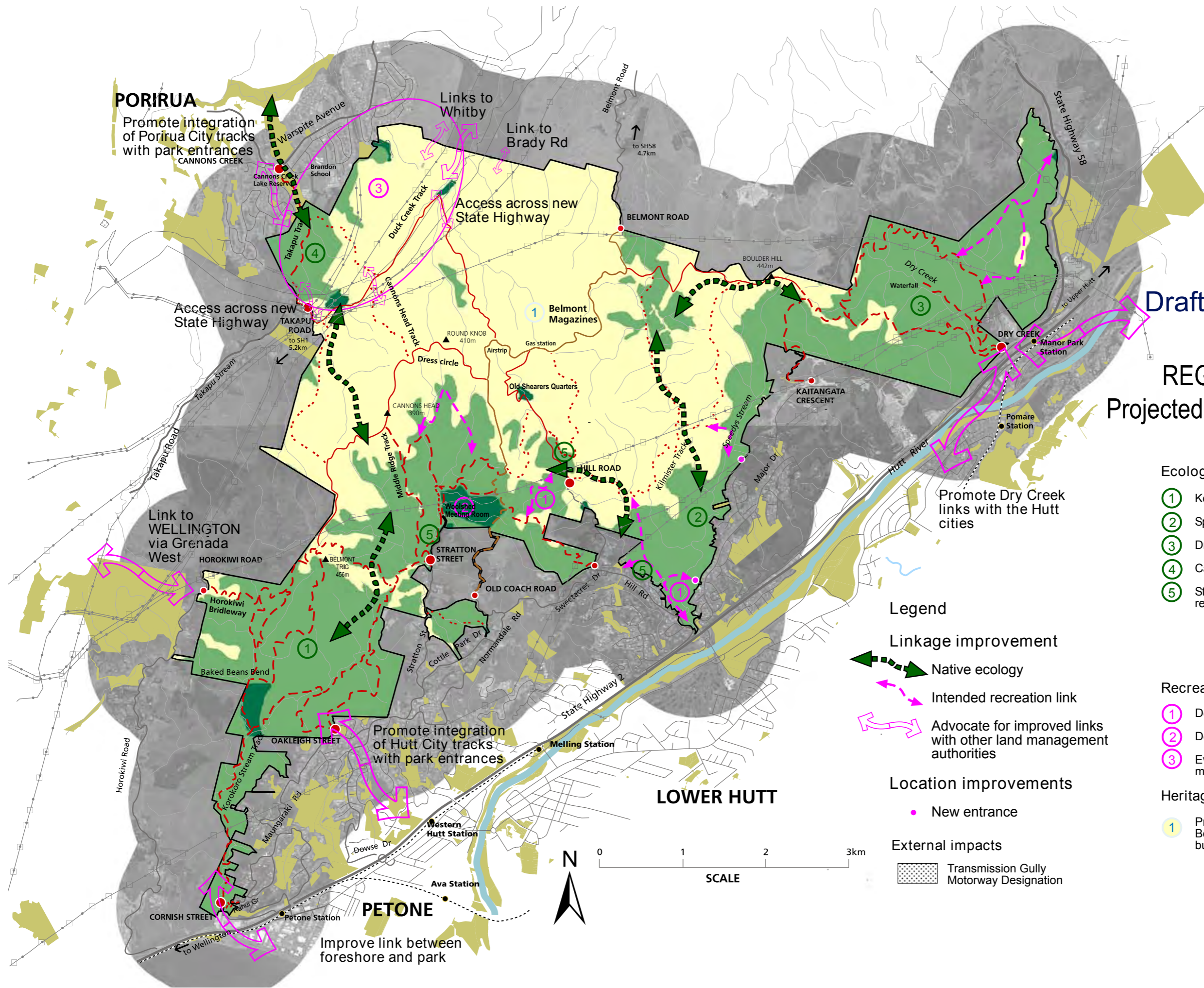


- Park Facilities: General**
- Major Entrance with sign
  - Minor Entrance with map board
  - \* Activity Centre has:
    - i Information displays
    - P Car park
    - A Picnic area
    - ♿ Toilets
  - Pony Club Leases and Licences
  - H* Korokoro Dam Heritage Feature
  - — — Old Coach Road Formation (Shared track and Farm road - refer to Rules)
- Park Facilities: Tracks**
- — — Farm roads
  - - - - - Shared track (refer to Rules)
  - . . . . . Walking track
  - . . . . . Marked route (walking)

- Natural Features**
- Natural vegetation
  - Plantation forest
  - Pasture / grass
  - ▲ High point
  - — — Rivers and streams
- Other Features**
- — — Public Road
  - — — 250 metre contour
  - Power pylons
  - Building
  - Public land (outside of park)



Draft: April 2010  
**BELMONT REGIONAL PARK -**  
 Projected future changes



- Ecology**
- ① Korokoro forest health
  - ② Speedy's forest health
  - ③ Dry Creek forest health
  - ④ Cannons Ck revegetation
  - ⑤ Stratton St and Hill Rd revegetation

- Recreation**
- ① Develop walking tracks
  - ② Develop biking tracks
  - ③ Evaluate options for land management

- Heritage**
- ① Preserve examples of Belmont magazine bunkers

**Legend**

**Linkage improvement**

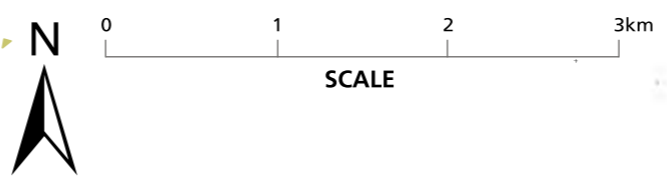
- ➡ Native ecology
- ➡ Intended recreation link
- ➡ Advocate for improved links with other land management authorities

**Location improvements**

- New entrance

**External impacts**

- ▨ Transmission Gully
- ▨ Motorway Designation



**PORIRUA**  
 Promote integration of Porirua City tracks with park entrances  
 CANNONS CREEK

Access across new State Highway

Links to Whitby  
 Link to Brady Rd

Access across new State Highway

① Belmont Magazines

Promote Dry Creek links with the Hutt cities

Link to WELLINGTON via Grenada West

Promote integration of Hutt City tracks with park entrances

**LOWER HUTT**

**PETONE**  
 Improve link between foreshore and park