

QUEEN ELIZABETH PARK in 2010

Draft: April 2010



Natural Features

- Natural vegetation
- Plantation forest
- Pasture / grass
- Sandhills
- Rivers and streams
- Natural and man made ponds

Park Facilities: General

- Major Entrance with sign
- Minor Entrance with map board
- * Activity Centre has:
- i Information displays
- P Car park
- A Picnic area
- ♿ Toilets

Pony Club

- Pony Club Leases and Licences
- H Heritage feature

Park Facilities: Tracks

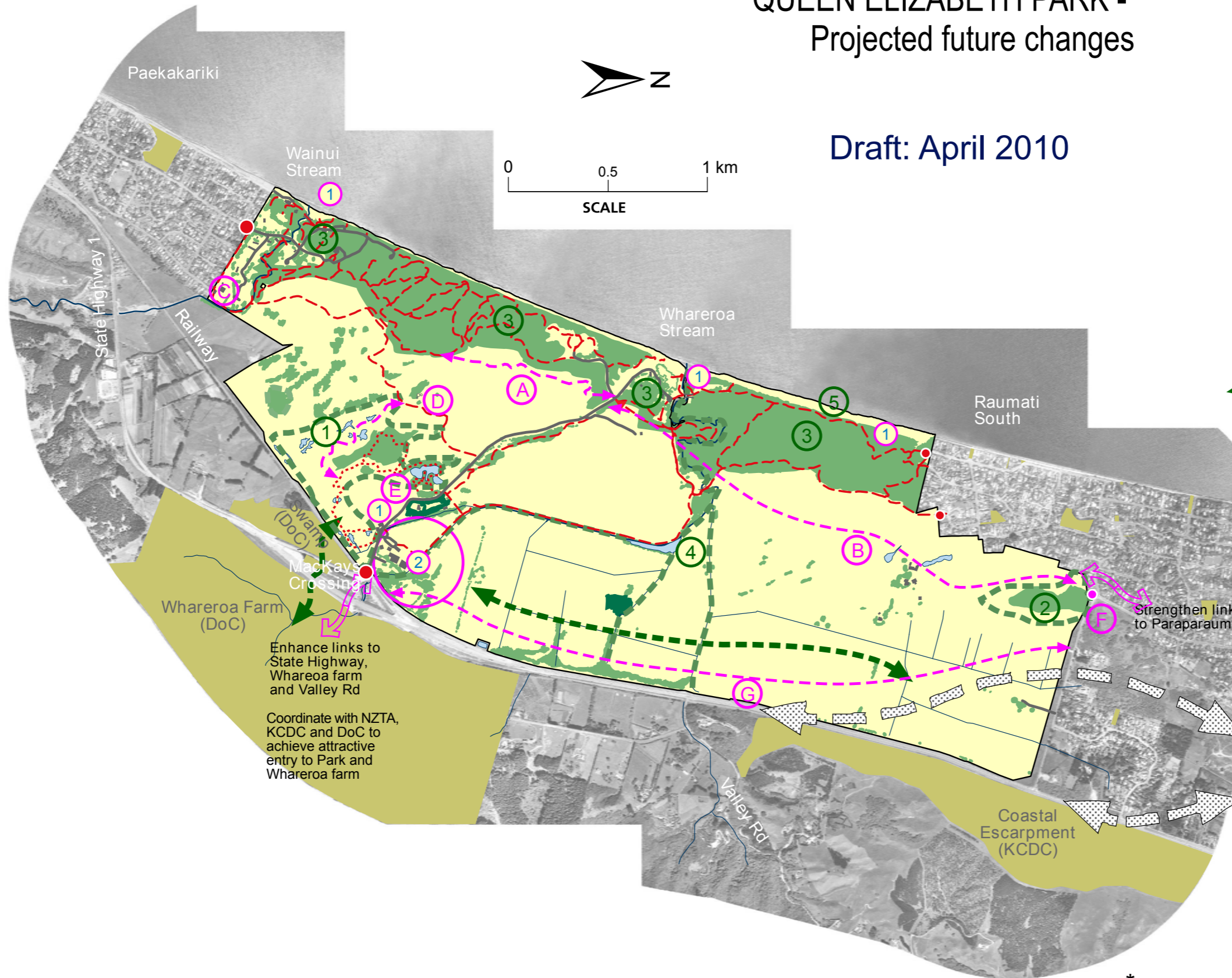
- Shared track (refer to Rules)
- Walking track

Other Features

- Public Road
- Buildings
- Public Reserves (external to park)

QUEEN ELIZABETH PARK - Projected future changes

Draft: April 2010



Ecology

- ① Forest Remnant extension / wetland restoration
- ② Poplar St wetland revegetation
- ③ Coastal dunes revegetation Raumati, Whareroa Stream, Paekakariki, Wainui
- ④ Whareroa Stream riparian revegetation
- ⑤ Rolling easement for shoreline retreat

- Extent of project
- Ecological links

Recreation

- Ⓐ Extension of cycleway to Whareroa Rd
- Ⓑ New cycleway between Whareroa Rd and Poplar Ave
- Ⓒ Potential neighbourhood park
- Ⓓ "Yankee Trail" as new name for track
- Ⓔ "Te ara o Tipapa" as new name for walking track
- Ⓕ Minor entrance on Poplar Ave
- Ⓖ Commuter cycleway

- Intended recreation link
- Advocate recreation improvement with other management authorities
- NZTA options for MacKays - Peka Peka expressway *

Heritage Projects

- ① Heritage / Nature interpretation at Wainui Pa, Whareroa Pa, MacKays Crossing, Raumati South
- ② Potential heritage precinct

Enhance links to State Highway, Whareoa farm and Valley Rd

Coordinate with NZTA, KCDC and DoC to achieve attractive entry to Park and Whareroa farm

* GW will work with New Zealand Transport Agency on finalising options for the expressway