



WAIOHINE FLOODPLAIN MANAGEMENT PLAN

JUNE 2011

We are making progress

Work has progressed from investigations to looking at options to mitigate the flood risk in the Floodplain Management Plan (FMP) for the Waiohine River. These options will become more detailed and the most practical set of solutions or options will become more apparent. This work is now able to progress due to the construction of the upgraded State Highway Bridge.

We want your ideas

The 1 in 100-year return period flood is significant as it will affect over 300 urban and rural homes on both sides of the Waiohine River.

Through investigations, Greater Wellington has a better idea of the flood hazard (see more details over the page). Now it is time to take this information to the floodplain community and explore a range of options both to do something about it and protect or enhance the values of the river.

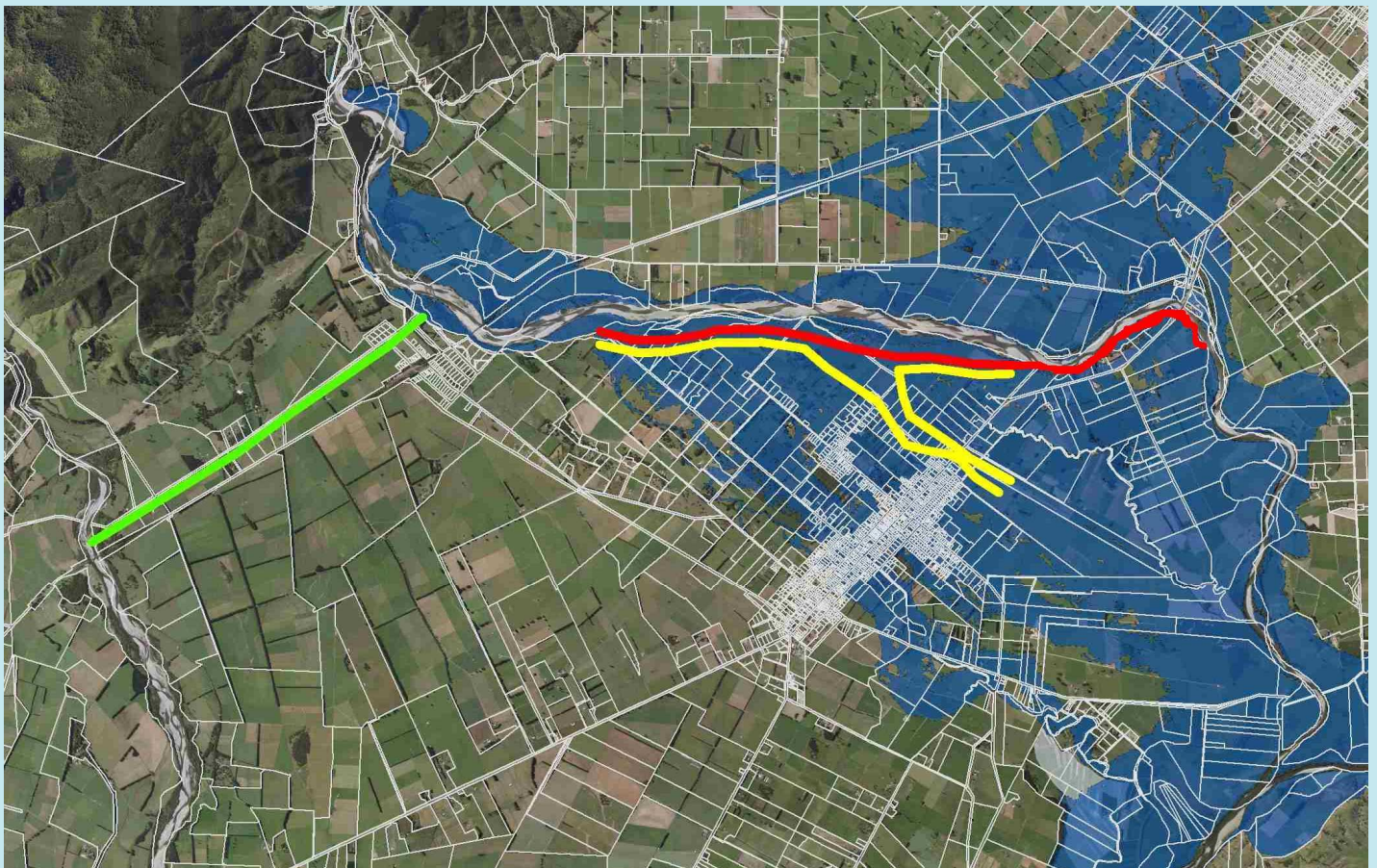
Some examples of possible options:

Option 1 – Green – Divert the Waiohine River into the Tauherenikau River.

Option 2 – Red – Construct a stopbank joining the existing stopbank at Fairbrothers with the existing stopbank upstream of Fullers Bend.

Option 3 – Yellow – Construct stopbanks feeding into the Apple Barrel Floodway, with a major upgrade of the floodway.

As you can see some of these options would be more expensive than others. Please feel free to come up with as many ideas as you want and share them with GW staff and others in the community. Please don't be put off, all ideas are welcome. If they are not workable or affordable, we will explain why.



Three basic options in different colours over the 100 year flood extent map.

Summary of hazards

- The top of Waiohine River Catchment can experience rainfall of up to 60 to 70mm per hour, which can cause damaging flood events.
- With climate change, NIWA predicts more intense storms will happen more frequently in the catchments of the Waiohine and Mangatarere Rivers.
- Many of the older stopbanks will be overtopped in anything larger than a 1 in 20-year flood event.
- Even a small amount of overtopping will allow a large amount of water on to the floodplain.
- Rising property values and increased development means flood damages will be more expensive than in the past. The cost of a 1 in 100 year event will exceed \$54 million.
- A significant earthquake in the Tararua would send a large pulse of gravel through the river system, which would raise the river bed and increase the flood hazard.
- The river scheme budget limits most flood protection work to planting, channel alignment, grooming of gravel and building of rock groynes which can be compromised in a large event.
- Weed growth in the river needs constant management so as not to block the channel.

Environmental considerations

As part of the solution GW is required to include environmental, recreational and cultural enhancement. An ideal solution would help control the risk of flooding and improve the riverside environment.

We are interested in what you value for and how this can be enhanced. E.g. Access for the public along the river for walking or swimming.

Please bear in mind that access along the river may be controlled to minimise the impact on some of the local fish and bird life, as well as the fact that the vast majority of the land is privately owned.

The result we hope will be an improvement in the river habitat for all life in your community, with the exclusion of pest animals and plants.

Community drop-in sessions

The first step is to run drop-in sessions where people can look at some options to alleviate flood risk and suggest ideas of their own.

The options and suggestions then be taken away and investigated and presented to the Waiohine River Floodplain Management Planning Committee meeting. GW will assess the preliminary costs and practicalities of the suggestions and look at ways for the community to pay for them.

Drop in sessions - Greytown Library

- **Wednesday, 22 June, 10am to 5pm**
- **Saturday, 2 July, 10am to 5pm**

Please come and see us

There will be staff available to answer your questions and record your ideas and opinions through the day. We would love to have your input in how we mitigate/control and somehow solve the problems related to the flood hazard for Greytown and surrounds. Please join me and the other flood protection engineers during one of these sessions.

You can leave comments on our webpage:

www.gw.govt.nz/flood-plain-management-plan/

Why such a long drawn out process?

It's a case of do it once and do it right. In this case that means following accepted best practice.

The five 5 phases of an FMP are:

Phase 1 – Investigating the hazard to the community and how that is likely to change over time. This also involved finding background information on the behaviour of the river and its environment in the form of a benchmark to compare the effects of any later mitigation options.

Phase 2 – Identifying all the possible practical solutions to help control the flood hazard. In this process preliminary costings for these solutions will be made to help direct the decisions that the community will make.

Phase 3 – The options outlined in Phase 2 will be further refined and three or four options selected for further development. This further development will be looking quite specifically at the key financial and environmental and social implications of each of the selected options, these will then be taken back to the community for consultation to eventually enable the selection of the right options for the community.

Phase 4 – These options are either endorsed and carried forward or not depending on the degree of support from the local and wider community. These are then incorporated into a plan which details all the background investigation work and process of selection of the options. This includes when and how these mitigation options will be put in place. The plan will be valid for more than 10 years.

Phase 5 – Implementation of the FMP document created in Phase 4, this involves ongoing construction, maintenance and implementation of flood mitigation. This process will continue for the duration of the plan. When the plan expires a review will be undertaken to see if all the objectives have been satisfied.

Why can't we do something right now?

Greater Wellington Regional Council is required by legislation to provide a rigorous analysis of the hazard and the best solutions for the community this also requires in depth consultation with the local and wider community.

Greater Wellington already spends considerable time, effort and funds on other individual projects and ongoing programmes throughout the Wairarapa and the region. Our ability to react quickly to all your needs is limited by requirements to allow everyone to be heard. This can seem very frustrating when you want something done now, but it should deliver a plan that suits the community and that people are willing to pay for.

For more information

If you have any questions please contact James Flanagan on 04 830 4082 or james.flanagan@gw.govt.nz. Or you can leave your comments on our webpage www.gw.govt.nz/flood-plain-management-plan

For more information, contact Greater Wellington:

James Flanagan
04 830 4082
James.flanagan@gw.govt.nz