

Wainuiomata River

Streams alive!

What is *Streams alive?*

Streams alive is Greater Wellington's streamside assistance programme for high value stream catchments. It's part of our biodiversity programme to halt the continuing loss of species and ecosystems around the region.

Through the programme we support landowners who want to plant the stream margins on their property. The 12 catchments in the *Streams alive* programme are:-

Waitohu Stream

Otaki River

Ration Creek

Karori Stream

Wainuiomata River

Mangaroa River

Owhanga Stream

Upper Waiohine River

Upper Ruamahanga River

Kaiwhata River

Waihora Stream

Glendhu Creek

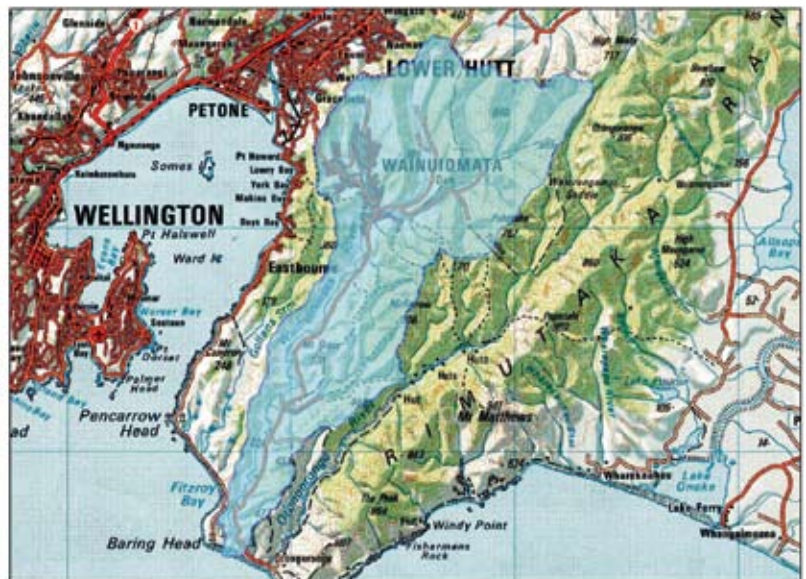
Greater Wellington has chosen the Wainuiomata River as part of the *Streams alive* programme because streamside planting in just a few areas will make a difference to the overall ecological health of the stream.

The variety of stream types, geology and climate influences in this catchment help complete the range represented in the *Streams alive* programme. As a whole the programme covers the full range of stream and ecosystem types present in the region.

The eastern catchment extends into the Rimutaka Range where the stream is clean and well-shaded. The lower valley has many small streams that flow through native bush, exotic forestry, farms and lifestyle properties before joining the main river that flows into Cook Strait. The river mouth has good inanga (whitebait) spawning habitat.

The Wainuiomata River is in the *Streams alive* programme because:

- 43% of the 13,378 ha catchment is in native bush or exotic forest
- around 54% of the catchment is protected by covenants or in Department of Conservation ownership
- the wide variety of stream habitats in the catchment provide home for a



wide variety of native fish which are likely to include shortfin eel, longfin eel, torrentfish, giant kokopu, koaro, dwarf galaxias, banded kokopu, inanga, shortjaw kokopu, lamprey, non-migratory bullies, common bully, giant bully, bluegill bully, redfin bully, koura, and smelt

- evidence from streamside planting projects around the region indicates that if the few open areas of the river are planted, there will be measurable improvements to its overall ecological health.



Male redfin bully



Weta by George Gibbs



Green punctatus gecko



Eel



Kereru

How Greater Wellington can help

Greater Wellington can help landowners in *Streams alive* catchments by:

- drawing up a stream plan with the landowner showing an agreed programme for planting the streams and other waterways on the property
- supplying native plants suited to local conditions
- paying contractors to plant the plants
- paying contractors to undertake weed control for two years after planting.

Greater Wellington will not provide plants if they would create a flood management problem.

What will you have to do?

Landowners will have to:

- permanently fence off a section of the stream that will allow between two and seven rows of native plants to become established
- keep planted areas free of stock.

What changes will you see?

After just a year without stock access, the stream banks will be more stable. After about four years the plants will be about as tall as a person and will be shading out the weeds, starting to shade the stream, and providing habitat for streamside life.

In the long term, not only will the stream be healthier and much more attractive, you will also see more native birds in the neighbourhood. The stream will have cleaner water that will be more palatable to stock. You may even find that the stream becomes a feature that adds value to your property.



Well-fenced plantings on a stream margin



A well-fenced section of a stream

More information

For more information on the *Streams alive* programme, contact Michelle Bird on 04 526 5323 or 0800 496 734, email riparian@gw.govt.nz or check out our website at www.gw.govt.nz/streams. If you are not in a *Streams alive* catchment, Greater Wellington staff are still available to offer advice and help you prepare a stream plan for your property.

For more information contact us
Greater Wellington
34 Chapel Street
P O Box 41
Masterton
T 06 378 2484
F 06 378 2146
W www.gw.govt.nz

Greater Wellington
1056 Fergusson Drive
P O Box 40847
Upper Hutt
T 04 526 4133
F 04 526 4171

Greater Wellington
142 Wakefield Street
P O Box 11646
Wellington
T 04 384 5708
F 04 385 6960

Greater Wellington is the promotional name for the Wellington Regional Council
Publication date
May 2006
GW/WAI-G-05/266