



# Upgrading Mackays Crossing

30 May 2018

Mackays Crossing on State Highway 1 in Kāpiti will be upgraded from 10 June for up to eight weeks. Before the next stage of the Transmission Gully project, we will be undertaking some major road maintenance on the crossing and will upgrade the barriers and drainage at the same time.

The upgrade will avoid the need for significant roadworks once the gully route is open. If it is not done now, the likelihood of ongoing repairs to the deteriorating surface is high.

## Information for residents and visitors to Queen Elizabeth Park and Whareroa Farm

### Vehicle access to and from SH1

The Mackays Crossing off and on ramps will be open for residents and visitors to use during the roadworks.

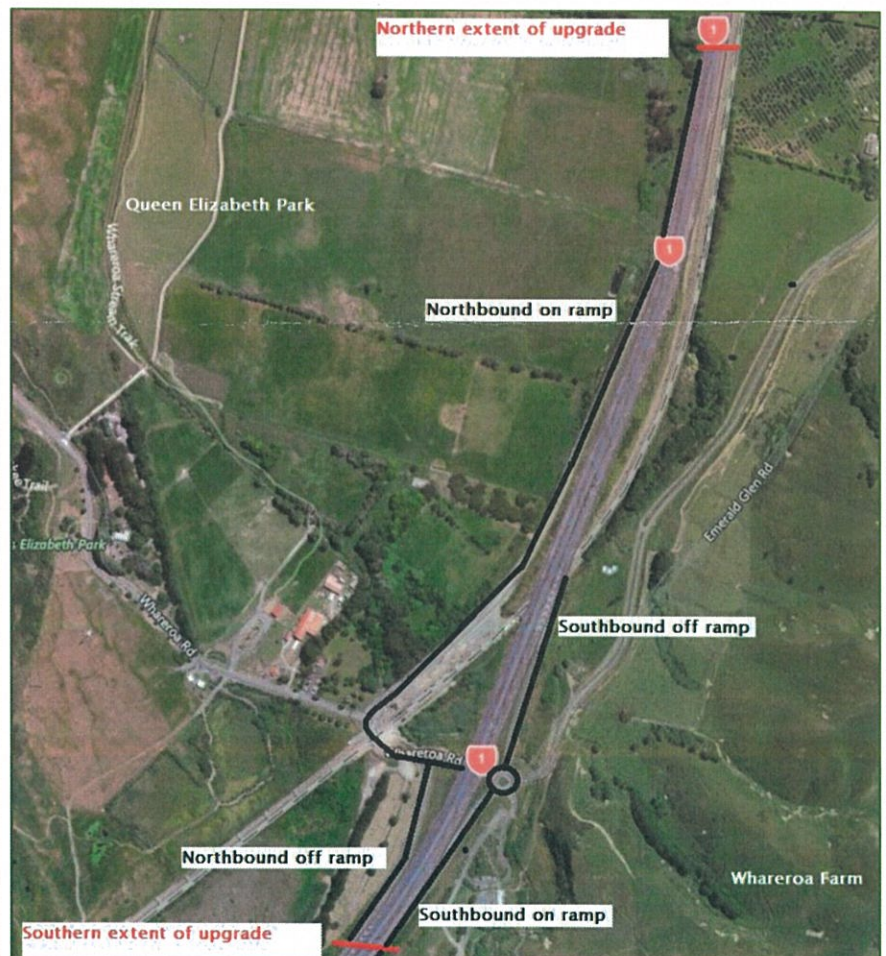
An exit lane bypassing the works will be clearly marked so vehicles can access the ramps.

However, please note that the southbound off ramp will be closed late at night when work takes place on the highway adjacent to the ramp entrance.

At all ramps, be prepared for stop/go traffic management at off-peak times. Expect to see trucks and work machinery moving between the highway work site and the works parking area at Whareroa Farm.

All ramps will be free of traffic controls at weekends and during peak commuter hours. Works will not take place during those times.

Thank you for your patience and understanding during this period.



## Traffic management on the highway

To do the work safely and quickly, we will be using a traffic management layout known as a contraflow on the state highway. This involves traffic travelling in both directions using one side of the road while the other side is being worked on.

Basically it will be a continuation of the one-lane-each-way system from Paekakariki to about 1 km south of the Raumati on and off ramps. The median barriers at each end will be altered to accommodate this. In the first week from 10 June, there will be a lane closure only; then the contraflow will be in place in the following weeks.

The contraflow will operate temporarily 24/7 with a speed limit of 80km/h. This will provide consistency for drivers and will be safer for site workers. A fulltime contraflow has not been used in the Wellington region before so road users will need to be cautious while they get used to it. Just remember there will always be one lane open in each direction during the works.

## Cyclists

Cyclists will not use the contraflow. A temporary southbound cycle lane will lead cyclists to the off and on ramps to bypass the worksite. Northbound cyclists will use the ramps to get back onto the highway north.

## The works programme – day and night shifts

The full contraflow will allow work to take place in two shifts round the clock and shortens the construction time. Work will not take place during peak commuter times or at weekends to reduce the visual distraction when large volumes of traffic are on the road.


## Contacts

Capital Journeys, the joint venture of Consultants WSP Opus and Fulton Hogan that maintains state highways in the Wellington region, is undertaking this work on behalf of the NZ Transport Agency.

If you have any queries about the works, contact Theo Marais, Surfacing Divisional Manager, 027 539 0943, [theo.marais@fultonhogan.com](mailto:theo.marais@fultonhogan.com).

Regular progress reports will be posted on the Wellington state highway maintenance page on the Transport Agency website: [www.nzta.govt.nz/wellington-maintenance](http://www.nzta.govt.nz/wellington-maintenance).

Regards



**Martin Gribble**  
NZTA Maintenance Contract Manager